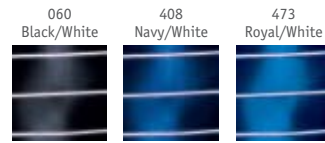


Technical Suits



AQUA SHIFT™



79% Polyester/21% Lycra®
Aqua Shift™ is manufactured under license from Spyder Active Sports, Inc.



MALE ZIPPERBACK FULL BODY

Style: ASMF6
Sizes: 26-36
Color:
044 Uranium/Red



MALE ZIPPERBACK SHORT JOHN

Style: ASMS6
Sizes: 26-36
Colors:
044 Uranium/Red
060 Black/White
408 Navy/White
473 Royal/White



MALE TIGHT

Style: ASTT6
Sizes: 26-36
Colors:
060 Black/White
408 Navy/White
473 Royal/White



MALE JAMMER

Style: ASJR6
Sizes: 20-36
Colors:
060 Black/White
408 Navy/White
473 Royal/White



MALE RACER

Style: ASER6
Sizes: 20-36
Colors:
060 Black/White
408 Navy/White
473 Royal/White



**FEMALE ZIPPERBACK
FULL BODY**

Style: ASZF6
Sizes: 26-36
Color:
044 Uranium/Red



**FEMALE ZIPPERBACK
SHORT JOHN**

Style: ASZS6
Sizes: 24-36
Color:
044 Uranium/Red



**FEMALE AEROBACK
FULL BODY**

Style: ASFB6
Sizes: 26-36
Colors:
060 Black/White
408 Navy/White
473 Royal/White



**FEMALE AEROBACK
SHORT JOHN**

Style: ASSJ6
Sizes: 24-36
Colors:
060 Black/White
408 Navy/White
473 Royal/White



FEMALE AEROBACK

Style: ASAB6
Sizes: 20-38
Colors:
060 Black/White
408 Navy/White
473 Royal/White



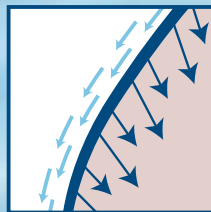
Compression technology reduces drag and improves fluid dynamics.

La technologie de compression réduit la l'effet de retenue et améliore la dynamique des fluides.



Water repellent coating channels water flow.

L'enduit imperméable canalise l'écoulement de l'eau.



Tyr Fusion²

www.swimottawa.com
 Email: service@swimottawa.com

Our remarkably affordable TYR Fusion² technology is built with some of the most advanced aquatic engineering to ever enter a pool. First, we took existing and proven, patented technologies like Turbulence Control, TYR's unique water repellent coating, and a silky smooth finish for reduced drag. Then we married it to our tried-and-true innovations such as Fabrication Logic and Fluid Channel Dynamics for superior flow. Add in our unique, calendarized Isolated Compression technology for more glide efficiency, and less drag, and you have TYR Fusion². It's what happens when the past and the future meet at the swim lab.

Notre technologie TYR Fusion², bien que remarquablement abordable, est bâtie grâce à l'ingénierie aquatique la plus avancée. Premièrement, nous avons utilisé des technologies brevetées ayant déjà fait leurs preuves, comme le Contrôle de la Turbulence, l'unique enduit imperméable de TYR et un fini soyeux afin de réduire l'effet de retenue. Nous les avons ensuite mariées à nos innovations éprouvées telles que Logique de Fabrication et Dynamique du Canal d'Eau pour un glissement supérieur. Ajoutez notre unique technologie de Compression Isolée calendrierée pour plus d'efficacité de glisse et moins de retenue et vous obtenez TYR Fusion². C'est ce qui arrive quand le passé et le future se rencontrent au laboratoire de natation.



MALE TIGHT
 Style: TFUS6
 Sizes: 26-36



MALE JAMMER
 Style: SFUS6
 Sizes: 20-36



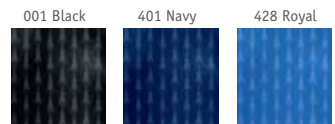
MALE RACER
 Style: RFUS6
 Sizes: 20-36



**FEMALE AEROBACK
 SHORT JOHN**
 Style: ASFU6
 Sizes: 24-36



FEMALE AEROBACK
 Style: AFUS6
 Sizes: 20-38



Performance Durafast

I swim in ottawa.com 

www.swimottawa.com
Email: service@swimottawa.com



MICROBACK

Style: DMFL7

Sizes/Grandeurs:

Adult/Adulte: 30 to/à 40

Youth/Enfant: 8/22 to/à 14/28

Colors/Couleurs:

420 blue/bleu

610 red/rouge

310 green/vert

Flash

A. SPLICE MAXBACK

Style: MFLA7
 Sizes/Grandeurs:
 Adult/Adulte: 30 to/à 40
 Youth/Enfant: 8/22 to/à 14/28

B. DIMAXBACK

Style: DFLA7
 Sizes/Grandeurs:
 Adult/Adulte: 30 to/à 40
 Youth/Enfant: 8/22 to/à 14/28

C. CURVE SPLICE JAMMER

Style: SFLA7
 Sizes/Grandeurs:
 Adult/Adulte: 30 to/à 40
 Youth/Enfant: 8/22 to/à 14/28

D. CURVE SPLICE SQUARE LEG

Style: BFLA7
 Sizes/Grandeurs:
 Adult/Adulte: 30 to/à 40

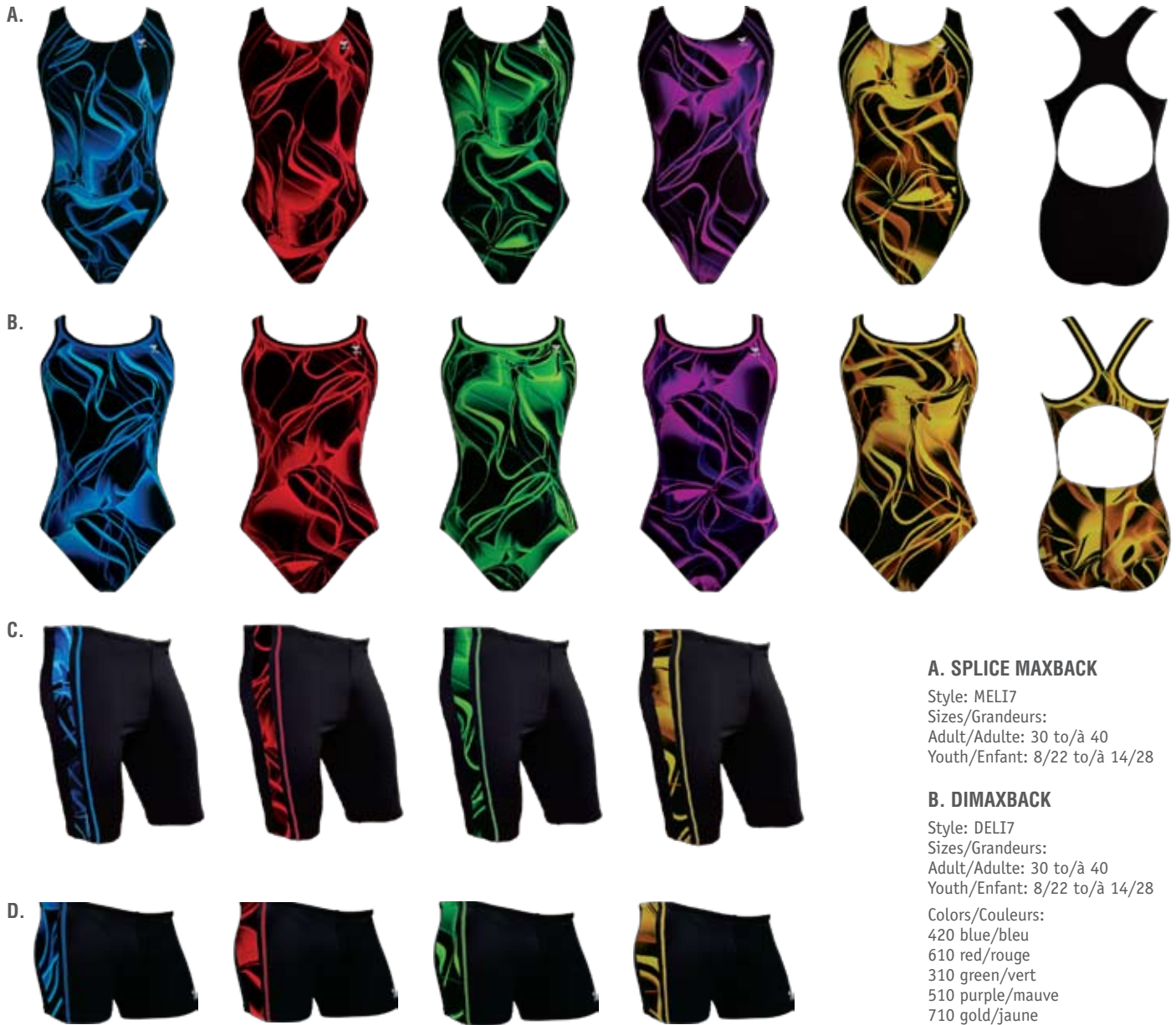
E. RACER SIDE PANEL

Style: RFLA7
 Sizes/Grandeurs:
 Adult/Adulte: 30 to/à 40
 Youth/Enfant: 8/22 to/à 14/28
 Colors/Couleurs:
 420 blue/bleu
 610 red/rouge
 310 green/vert





Elixir



A. SPLICE MAXBACK

Style: MELI7
 Sizes/Grandeurs:
 Adult/Adulte: 30 to/à 40
 Youth/Enfant: 8/22 to/à 14/28

B. DIMAXBACK

Style: DELI7
 Sizes/Grandeurs:
 Adult/Adulte: 30 to/à 40
 Youth/Enfant: 8/22 to/à 14/28

Colors/Couleurs:
 420 blue/bleu
 610 red/rouge
 310 green/vert
 510 purple/mauve
 710 gold/jaune

C. SPLICE JAMMER

Style: SELI7
 Sizes/Grandeurs:
 Adult/Adulte: 30 to/à 40
 Youth/Enfant: 8/22 to/à 14/28

D. SPLICE SQUARE LEG

Style: BELI7
 Sizes/Grandeurs:
 Adult/Adulte: 30 to/à 40
 Colors/Couleurs:
 420 blue/bleu
 610 red/rouge
 310 green/vert
 710 gold/jaune





Smoke

A. MAXBACK ZIG ZAG PIPING

Style: MSM07
Sizes/Grandeurs:
Adult/Adulte: 30 to/à 40
Youth/Enfant: 8/22 to/à 14/28

B. DIAMONDBACK

Style: DSM07
Sizes/Grandeurs:
Adult/Adulte: 30 to/à 40
Youth/Enfant: 8/22 to/à 14/28
Colors/Couleurs:
420 blue/bleu
610 red/rouge
670 pink/rose





Phoenix

A.



SPLICE MAXBACK

Style: MPH07
Sizes/Grandeurs:
Adult/Adulte: 30 to/à 40
Youth/Enfant: 8/22 to/à 14/28

DIMAXBACK

Style: DPH07
Sizes/Grandeurs:
Adult/Adulte: 30 to/à 40
Youth/Enfant: 8/22 to/à 14/28

Colors/Couleurs:
420 blue/bleu
610 red/rouge
310 green/vert

B.







Pr

A. SPLICE MAXBACK

Style: MPRX7
 Sizes/Grandeurs:
 Adult/Adulte: 30 to/à 40
 Youth/Enfant: 8/22 to/à 14/28

B. DIMAXBACK

Style: DPR07
 Sizes/Grandeurs:
 Adult/Adulte: 30 to/à 40
 Youth/Enfant: 8/22 to/à 14/28



C. CURVE SPLICE JAMMER

Style: SPR07
 Sizes/Grandeurs:
 Adult/Adulte: 30 to/à 40
 Youth/Enfant: 8/22 to/à 14/28

D. CURVE SPLICE SQUARE LEG

Style: BPR07
 Sizes/Grandeurs:
 Adult/Adulte: 30 to/à 40
 Colors/Couleurs:
 420 blue/bleu
 610 red/rouge
 310 green/vert



I swim ⁱⁿ ottawa.com 

www.swimottawa.com

Email: service@swimottawa.com



A.



Ht

A. SPLICE MAXBACK

Style: MHUR7
 Sizes/Grandeurs:
 Adult/Adulte: 30 to/à 40
 Youth/Enfant: 8/22 to/à 14/28

B. DIAMONDBACK

Style: DHUR7
 Sizes/Grandeurs:
 Adult/Adulte: 30 to/à 40
 Youth/Enfant: 8/22 to/à 14/28

B.



C. SPLICE JAMMER

Style: SHUR7
 Sizes/Grandeurs:
 Adult/Adulte: 30 to/à 40
 Youth/Enfant: 8/22 to/à 14/28

D. CURVE SPLICE SQUARE LEG

Style: BHUR7
 Sizes/Grandeurs:
 Adult/Adulte: 30 to/à 40

C.



E. RACER

Style: RHUR7
 Sizes/Grandeurs:
 Adult/Adulte: 30 to/à 40
 Youth/Enfant: 8/22 to/à 14/28
 Colors/Couleurs:
 420 blue/bleu
 963 multi warm/multi chaud
 310 green/vert

D.



E.



Alliance Splice



A. SPLICE MAXBACK

Style: MDAL7
 Sizes/Grandeurs:
 Adult/Adulte: 30 to/à 40
 Youth/Enfant: 8/22 to/à 14/28
 Colors/Couleurs:
 062 black-khaki/noir-khaki
 446 navy-turquoise/marine-turquoise
 408 navy-white/marine-blanc
 242 brown-soft blue/brun-bleu pâle

B. SPLICE JAMMER

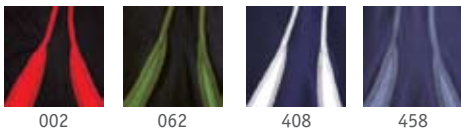
Style: SDAL7
 Sizes/Grandeurs:
 Adult/Adulte: 30 to/à 40
 Youth/Enfant: 8/22 to/à 14/28

C. SPLICE SQUARE LEG

Style: BDAL7
 Sizes/Grandeurs:
 Adult/Adulte: 30 to/à 40

D. SPLICE RACER

Style: RDAL7
 Sizes/Grandeurs:
 Adult/Adulte: 30 to/à 40
 Youth/Enfant: 8/22 to/à 14/28
 Colors/Couleurs:
 002 black-red/noir-rouge
 062 black-khaki/noir-khaki
 408 navy-white/marine-blanc
 458 navy-steel grey/marine-gris acier



Alliance Stitch **new**



E. SPLICE MAXBACK

Style: MDAS7
 Sizes/Grandeurs:
 Adult/Adulte: 30 to/à 40
 Youth/Enfant: 8/22 to/à 14/28
 Colors/Couleurs:
 062 black-khaki/noir-khaki
 059 black-pink/noir-rose
 034 black-charcoal/noir-charbon
 466 navy-apple/marine-pomme
 218 brown-sea foam/brun-écume de mer



F. SPLICE JAMMER

Style: SDAS7
 Sizes/Grandeurs:
 Adult/Adulte: 30 to/à 40
 Youth/Enfant: 8/22 to/à 14/28

G. SPLICE SQUARE LEG

Style: BDAS7
 Sizes/Grandeurs:
 Adult/Adulte: 30 to/à 40



H. SPLICE RACER

Style: RDAS7
 Sizes/Grandeurs:
 Adult/Adulte: 30 to/à 40
 Youth/Enfant: 8/22 to/à 14/28
 Colors/Couleurs:
 062 black-khaki/noir-khaki
 034 black-charcoal/noir-charbon
 458 navy-steel grey/marine-gris acier
 242 brown-sea foam/brun-écume de mer



Durafast Solid

A. MAXBACK

Style: MDUR7
 Sizes/Grandeurs: Adult/Adulte: 30 to/à 40
 Long: 30L to/à 40L
 Youth/Enfant: 8/22 to/à 14/28
 Colors/Couleurs:
 001 black/noir
 401 navy/marine
 425 royal/royal
 610 red/rouge
 421 steel blue/bleu acier
 210 brown/brun
 326 khaki/khaki



B. WOB MAXBACK

Style: BDUR7
 Sizes/Grandeurs: Adult/Adulte: 4 to/à 16
 Colors/Couleurs:
 001 black/noir
 401 navy-marine
 610 red/rouge



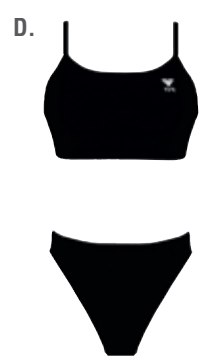
C. DIMAXBACK

Style: DDS07
 Sizes/Grandeurs: Adult/Adulte: 30 to/à 40
 Youth/Enfant: 8/22 to/à 14/28
 Colors/Couleurs:
 001 black/noir
 401 navy-marine
 610 red/rouge
 210 brown/brun
 326 khaki/khaki
 220 bordeaux
 425 royal



D. WOB DIAMONDBACK NEW

Style: BSD7
 Sizes/Grandeurs: Adult/Adulte: 4 to/à 16
 Colors/Couleurs:
 001 black/noir
 401 navy-marine
 610 red/rouge



Solid Microback **new**



E. MICROBACK NEW

Style: DSTL7
 Sizes/Grandeurs:
 Adult/Adulte: 30 to/à 40
 Youth/Enfant: 8/22 to/à 14/28

F. WOB MICROBACK NEW

Style: BSTL7
 Sizes/Grandeurs:
 Adult/Adulte: 4 to/à 16
 Colors/Couleurs:
 001 black-black/noir-noir
 059 black-pink/noir-rose
 401 navy-navy/marine-marine
 242 brown-soft blue/brun-bleu pâle



This color is not available in Canada.

Cette couleur n'est pas disponible au Canada.



This color is not available in Canada.

Cette couleur n'est pas disponible au Canada.

Durafast Solids

SQUARE LEG ZIP POCKET

Style: BZPD7
 Sizes/Grandeurs:
 Adult/Adulte: 30 to/à 42
 Colors/Couleurs:
 001 black-black/noir-noir
 401 navy-navy/marine-marine
 021 black-bordeau/black-bordeau
 062 black-khaki/noir-khaki
 034 black-charcoal/noir-charbon
 434 steel blue-black/bleu acier-noir
 458 navy-steel grey/marine-gris acier



SPLICE SQUARE LEG NEW

Style: BSPC7
 Sizes/Grandeurs:
 Adult/Adulte: 30 to/à 42
 Colors/Couleurs:
 017 black-charcoal-bordeau/
 noir-charbon-bordeau
 471 navy-steel grey-steel blue/
 marine-gris acier-bleu acier



JAMMER

Style: SDUR7
 Sizes/Grandeurs:
 Adult/Adulte: 30 to/à 40
 Youth/Enfant: 8/22 to/à 14/28



RACER

Style: RDUR7
 Sizes/Grandeurs:
 Adult/Adulte: 30 to/à 40
 Youth/Enfant: 8/22 to/à 14/28
 Colors/Couleurs:
 001 black/noir
 401 navy/marine
 425 royal/royal



SQUARE LEG

Style: BPS7
 Sizes/Grandeurs:
 Adult/Adulte: 30 to/à 40
 Youth/Enfant: 8/22 to/à 14/28
 Colors/Couleurs:
 001 black/noir
 401 navy/marine
 421 steel blue/bleu acier
 210 brown/brun



MASTER SUIT

Style: SOMD7
 Sizes/Grandeurs:
 Adult/Adulte: 30 to/à 44
 Colors/Couleurs:
 001 black/noir
 401 navy/marine



UNLINED MAXBACK

Style: MP07
 Sizes/Grandeurs:
 Adult/Adulte: 30 to/à 40
 Youth/Enfant: 8/22 to/à 14/28
 Colors/Couleurs:
 001 black/noir
 401 navy/marine
 425 royal/royal
 610 red/rouge



FEMALE SQUARE LEG

Style: BUND7
 Sizes/Grandeurs:
 Adult/Adulte: 30 to/à 42
 Long: 30L to/à 42L



INSTRUCTOR SUIT

Style: TIWF7
 Sizes/Grandeurs:
 Adult/Adulte: 30 to/à 40
 Long: 30L to/à 40L



ZIPPER BACK HIGHNECK

Style: HDUR7
 Sizes/Grandeurs:
 Adult/Adulte: 30 to/à 42
 Colors/Couleurs:
 001 black/noir
 401 navy/marine



Boomerang

SPLICE MAXBACK

Style: MSB07
 Sizes/Grandeurs:
 Adult/Adulte: 30 to/à 40
 Youth/Enfant: 8/22 to/à 14/28

SPLICE WOB

Style: BSB07
 Sizes/Grandeurs:
 Adult/Adulte: 4 to/à 16
 Colors/Couleurs:
 034 black-charcoal/noir-charbon
 446 navy-turquoise/marine-turquoise
 242 brown-soft blue/brun-bleu pâle



Titan

SPLICE RACER

Style: RTIP7
 Sizes/Grandeurs:
 Adult/Adulte: 30 to/à 42
 Youth/Enfant: 8/22 to/à 14/28

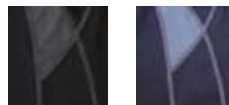
SPLICE SQUARE LEG

Style: BTIP7
 Sizes/Grandeurs:
 Adult/Adulte: 30 to/à 40

SPLICE JAMMER

Style: STIP7
 Sizes/Grandeurs:
 Adult/Adulte: 30 to/à 40
 Youth/Enfant: 8/22 to/à 14/28

Colors/Couleurs:
 034 black-charcoal/noir-charbon
 456 navy-steel grey/marine-gris acier
 434 steel blue-black/bleu acier-noir
 021 black-bordeau/noir-bordeau



034



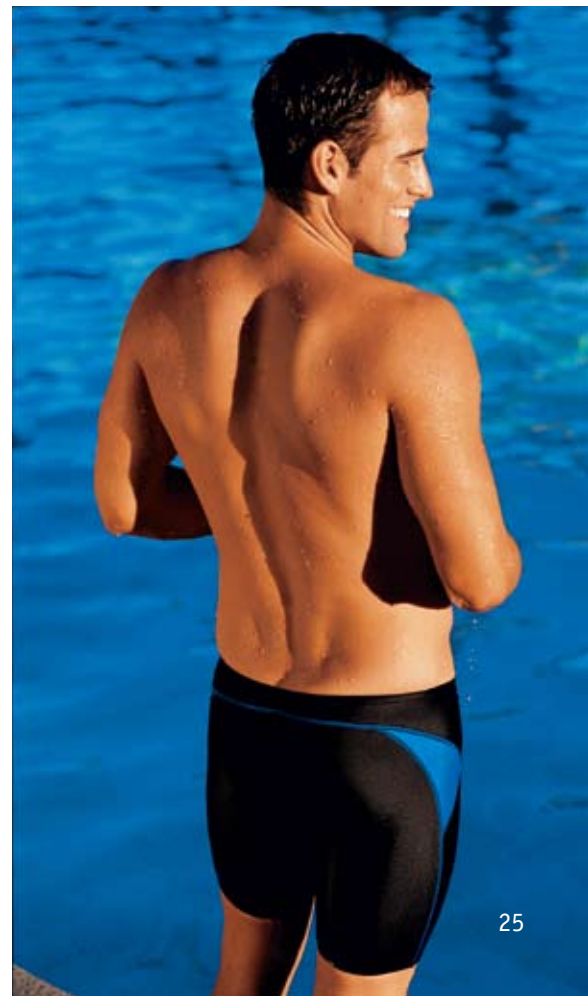
456



434



021



Performance Lycra



Torch



MAXBACK

Style: MTOR1
Sizes/Grandeurs:
Adult/Adulte: 30 to/à 40
Youth/Enfant: 8/22 to/à 14/28

MICROBACK

Style: DTOR1
Sizes/Grandeurs:
Adult/Adulte: 30 to/à 40
Youth/Enfant: 8/22 to/à 14/28
Colors/Couleurs:
420 blue/bleu
610 red/rouge
510 purple/mauve
710 gold/jaune

Zenith

MAXBACK

Style: MZEN1

Sizes/Grandeurs:

Adult/Adulte: 30 to/à 40

Youth/Enfant: 8/22 to/à 14/28

Colors/Couleurs:

420 blue/bleu

510 purple/mauve

610 red/rouge



Fribble

A. MICROBACK

Style: DFRI9
 Sizes/Grandeurs:
 Adult/Adulte: 30 to/à 40
 Youth/Enfant: 8/22 to/à 14/28

B. WOB MICROBACK

Style: BFRI9
 Sizes/Grandeurs:
 Adult/Adulte: 4 to/à 16

C. WOVEN SHORTS

Style: SFBF5
 Sizes/Grandeurs:
 Adult/Adulte: XS to/à XL
 Colors/Couleurs:
 241 brown-pink/brun-rose
 242 brown-blue/brun-bleu



Skulls

D. MICROBACK

Style: DSKU8
 Sizes/Grandeurs:
 Adult/Adulte: 30 to/à 40
 Youth/Enfant: 8/22 to/à 14/28

E. WOB MICROBACK

Style: BSKU8
 Sizes/Grandeurs:
 Adult/Adulte: 4 to/à 16
 Colors/Couleurs:
 001 black/noir
 610 red/rouge



Camouflage

F. MICROBACK

Style: DCAM8
 Sizes/Grandeurs:
 Adult/Adulte: 30 to/à 40
 Youth/Enfant: 8/22 to/à 14/28



G.



G. WOB MICROBACK

Style: BCAM8
 Sizes/Grandeurs:
 Adult/Adulte: 4 to/à 16
 Colors/Couleurs:
 290 Multi camo green/multi vert camo

Funkies

H. FLORAL DIAMONDBACK

Style: FUNF8
 Sizes/Grandeurs:
 Adult/Adulte: 30 to/à 40
 Youth/Enfant: 8/22 to/à 14/28
 Colors/Couleurs:
 754 yellow-blue/jaune-bleu



I. TROPICAL FLORAL DIAMONDBACK

Style: FUNT8
 Sizes/Grandeurs:
 Adult/Adulte: 30 to/à 40
 Youth/Enfant: 8/22 to/à 14/28
 Colors/Couleurs:
 679 green-pink/vert-rose

J. RETRO FLORAL DIAMONDBACK

Style: FUNR8
 Sizes/Grandeurs:
 Adult/Adulte: 30 to/à 40
 Youth/Enfant: 8/22 to/à 14/28
 Colors/Couleurs:
 803 pink-orange/rose-orange

K. KALEIDOSCOPE DIAMONDBACK

Style: FUNK8
 Sizes/Grandeurs:
 Adult/Adulte: 30 to/à 40
 Youth/Enfant: 8/22 to/à 14/28
 Colors/Couleurs:
 540 soft/pâle



Lycra Solids



A. MAXBACK
 Style: MS01
 Sizes/Grandeurs:
 Adult/Adulte: 30 to/à 40
 Youth/Enfant: 8/22 to/à 14/28

B. DIAMONDBACK
 Style: DSOL1
 Sizes/Grandeurs:
 Adult/Adulte: 30 to/à 40
 Youth/Enfant: 8/22 to/à 14/28

C. TANKINI DIAMONDBACK
 Style: TDS01
 Sizes/Grandeurs:
 Adult/Adulte: 4 to/à 16

D. WOB DIAMONDBACK
 Style: BDS01
 Sizes/Grandeurs:
 Adult/Adulte: 4 to/à 16
 Colors/Couleurs:
 001 black/noir
 402 navy/marine
 425 royal/royal
 610 red/rouge

Lycra Solids



E. DIMAXBACK NEW

Style: DDSL1
 Sizes/Grandeurs:
 Adult/Adulte: 30 to/à 40
 Youth/Enfant: 8/22 to/à 14/28

F. RACER

Style: RS01
 Sizes/Grandeurs:
 Adult/Adulte: 30 to/à 40
 Youth/Enfant: 8/22 to/à 14/28

G. JAMMER

Style: RJAM1
 Sizes/Grandeurs:
 Adult/Adulte: 30 to/à 40
 Youth/Enfant: 8/22 to/à 14/28
 Colors/Couleurs:
 001 black/noir
 402 navy/marine
 425 royal/royal
 610 red/rouge

H. SQUARE LEG

Style: SQL1
 Sizes/Grandeurs:
 Adult/Adulte: 30 to/à 40
 Youth/Enfant: 8/22 to/à 14/28
 Colors/Couleurs:
 001 black/noir
 402 navy/marine
 425 royal/royal

I. SQUARE LEG ZIP POCKET

Style: BZP1
 Sizes/Grandeurs:
 Adult/Adulte: 30 to/à 42
 Colors/Couleurs:
 001 black/noir
 402 navy/marine



Alliance Lycra

A. SPLICE MAXBACK

Style: MALL1
Sizes/Grandeurs:
Adult/Adulte: 30 to/à 40
Youth/Enfant: 8/22 to/à 14/28

B. SPLICE JAMMER

Style: SALL1
Sizes/Grandeurs:
Adult/Adulte: 30 to/à 40
Youth/Enfant: 8/22 to/à 14/28

C. SPLICE SQUARE LEG

Style: BALL1
Sizes/Grandeurs:
Adult/Adulte: 30 to/à 40

D. SPLICE RACER

Style: RALL1
Sizes/Grandeurs:
Adult/Adulte: 30 to/à 40
Youth/Enfant: 8/22 to/à 14/28
Colors/Couleurs:
002 black-red/noir-rouge
060 black-white/noir-blanc
408 navy-white/marine-blanc



Aqua Fitness Solids

A. PRINCESS SEAMS AQUA TANK

Style: ATP7

Sizes/Grandeurs:

Adult/Adulte: 6 to/à 20

Long: 8L to/à 20L

Plus: 22 to/à 26

Colors/Couleurs:

001 black/noir

401 navy/marine

425 royal/royal

220 bordeau

503 burgundy/bourgogne

421 steel blue/bleu acier

210 brown/brun

461 mediterranean blue/bleu méditerranée

440 turquoise

Style: MATP7 (mastectomy/massectomie)

Sizes/Grandeurs:

Adult/Adulte: 6 to/à 20

Long: 8L to/à 20L

Colors/Couleurs:

001 black/noir

401 navy/marine

210 brown/brun



B. PRINCESS SEAM 2 TONES AQUA TANK

Style: ATPP7

Sizes/Grandeurs:

Adult/Adulte: 8 to/à 20

Long: 8L to/à 20L

Colors/Couleurs:

021 black-bordeau/noir-bordeau

036 black-brown/noir-brun

458 navy-steel grey/marine-gris acier

436 steel blue-sky blue/bleu acier-bleu ciel



C. PRINCESS SEAM AQUA TANK W/ PIPING

Style: ATPC7

Sizes/Grandeurs:

Adult/Adulte: 8 to/à 20

Colors/Couleurs:

020 black-bordeau-white/noir-bordeau-blanc

033 black-charcoal-steel grey/noir-charbon-gris acier

046 black-brown-white/noir-brun-blanc

445 navy-steel bl.-sky bl./marine-bl. acier-bl. ciel

469 steel bl.-navy-sky bl./bl. acier-marine-bl. ciel

605 burgundy-navy-white/bourgogne-marine-blanc





The leg line of the suit differs from the picture.

Le niveau d'échancrure du maillot est différent de sur la photo.



SPLICE AQUA TANK NEW

Style: TSPV7

Sizes/Grandeurs:

Adult/Adulte: 8 to/à 20

Colors/Couleurs:

021 black-bordeau/noir-bordeau

408 navy-white/marine-blanc

436 steel blue-sky blue/bleu acier-bleu ciel



A. SQUARE NECK TANK

Style: TSQU7

Sizes/Grandeurs:

Adult/Adulte: 8 to/à 20

Long: 8L to/à 20L

D-cup: 8D to/à 20D

Colors/Couleurs:

062 black-khaki/noir-khaki

416 navy-sky blue/marine-bleu ciel

421 steel blue-white/bleu acier-blanc

209 brown-sky blue/brun-bleu ciel

221 bordeaux-white/bordeau-blanc

B. TANKINI SQUARE NECK W/ SKIRT

Style: TKSQ7

Sizes/Grandeurs:

Adult/Adulte: 8 to/à 20

Colors/Couleurs:

060 black-white/noir-blanc

408 navy-white/marine-blanc

224 brown-white/brun-blanc



C. CROSS-OVER TANK W/ PIPING

Style: TXSP7

Sizes/Grandeurs:

Adult/Adulte: 8 to/à 20

Plus: 22 to/à 26

Colors/Couleurs:

021 black-bordeau/noir-bordeau

458 navy-steel grey/marine-gris acier

436 steel blue-sky blue/bleu acier-bleu ciel

209 brown-sky blue/brun-bleu ciel

421 steel blue-white/bleu acier-blanc

408 navy-white/marine-blanc





A. V-NECK V-BACK TANK

Style: TVVP7
 Sizes/Grandeurs:
 Adult/Adulte: 8 to/à 20
 Long: 8L to/à 20L
 Colors/Couleurs:
 060 black-white/noir-blanc
 012 black-aqua/noir-aqua
 062 black-khaki/noir-khaki (not shown)
 408 navy-white/marine-blanc
 436 steel bl.-sky bl./bl. acier-bl. ciel
 224 brown-white/brun-blanc
 221 bordeau-white/bordeau-blanc

B. V-NECK V-BACK TANKINI

Style: TKVP7
 Sizes/Grandeurs:
 Adult/Adulte: 8 to/à 20
 Plus: 22 to/à 26
 Colors/Couleurs:
 060 black-white/noir-blanc
 408 navy-white/marine-blanc
 224 brown-white/brun-blanc

C. SURPLICE V-BACK NEW

Style: TCOX7
 Sizes/Grandeurs:
 Adult/Adulte: 8 to/à 20
 Colors/Couleurs:
 060 black-white/noir-blanc
 408 navy-white/marine-blanc
 421 steel blue-white/bleu acier-blanc
 224 brown-white/brun-blanc

D. SARONG TANK

Style: TSSP7
 Sizes/Grandeurs:
 Adult/Adulte: 8 to/à 20
 Colors/Couleurs:
 001 black/noir
 401 navy/marine





A. HORIZONTAL SPLICE AQUA TANK NEW A.

Style: ATHP7
Style: MATHS7 (mastectomy/massetomie)
Sizes/Grandeurs:
Adult/Adulte: 8 to/à 20
Colors/Couleurs:
046 black-brown-white/noir-brun-blanc
483 navy-khaki-white/marine-khaki-blanc
469 steel bl.-navy-sky bl./bl. acier-marine-bl. ciel



B. X-BACK LAP TANK

Style: XLAP7
Sizes/Grandeurs:
Adult/Adulte: 8 to/à 20
Colors/Couleurs:
001 black/noir
401 navy/marine
421 steel blue/bleu acier
461 mediterranean blue/bleu méditerranée





A. ALLIANCE SPLICE AQUA TANK

Style: ATMA7
 Sizes/Grandeurs:
 Adult/Adulte: 8 to/à 20
 Plus: 22 to/à 26
 Colors/Couleurs:
 021 black-bordeau/noir-bordeau
 408 navy-white/marine-blanc
 436 steel blue-sky blue/bleu acier-bleu ciel
 211 brown-black/brun-noir
 474 royal-turquoise (not shown)

B. TWIST BRA TANK

Style: TWIS7
 Sizes/Grandeurs:
 Adult/Adulte: 8 to/à 20
 Colors/Couleurs:
 001 black/noir
 401 navy/marine
 210 brown/brun

C. FRONT PIPING HIGH NECK TANK

Style: THFS7
 Style: MTHFS7 (mastectomy/massetomie)
 Sizes/Grandeurs:
 Adult/Adulte: 8 to/à 20
 Long: 8L to/à 20L
 Plus: 22 to/à 26
 Colors/Couleurs:
 020 black-bordeau-white/noir-bordeau-blanc
 445 navy-steel bl.-sky bl./marine-bl. acier-bl. ciel
 449 steel bl.-sky bl.-white/bl. acier-bl. ciel-blanc

D. PAREO

Style: PARE07
 Sizes/Grandeurs:
 Adult/Adulte: S to/à XL
 Colors/Couleurs:
 001 black/noir
 401 navy/marine
 421 steel blue/bleu acier
 210 brown/brun

Aqua Fitness Prints



A. AQUA TANK II

Style: TAFL7
 Sizes/Grandeurs:
 Adult/Adulte: 8 to/à 20
 D-cup: 8D to/à 20D



B. SPLICE MAXBACK NEW

Style: TMFL7
 Sizes/Grandeurs:
 Adult/Adulte: 8 to/à 20
 Long: 8L to/à 20L

C. V-NECK V-BACK TANK

Style: TVFL7
 Sizes/Grandeurs:
 Adult/Adulte: 8 to/à 20

D. FITNESS TANK NEW

Style: TFLA7
 Sizes/Grandeurs:
 Adult/Adulte: 8 to/à 20
 Colors/Couleurs:
 420 blue/bleu
 610 red/rouge
 310 green/vert



E. MASTECTOMY HIGH NECK TANK

Style: MHFL7
 Sizes/Grandeurs:
 Adult/Adulte: 8 to/à 20
 Colors/Couleurs:
 420 blue/bleu
 610 red/rouge





A. AQUA TANK II

Style: TAE7
 Sizes/Grandeurs:
 Adult/Adulte: 8 to/à 20
 Plus: 22 to/à 26
 Colors/Couleurs:
 420 blue/bleu
 610 red/rouge
 310 green/vert
 510 purple/mauve



B. AQUA TANK FRONT PRINT

Style: TCEL7
 Sizes/Grandeurs:
 Adult/Adulte: 8 to/à 20
 Colors/Couleurs:
 420 blue/bleu
 610 red/rouge
 310 green/vert
 510 purple/mauve

C. V-NECK V-BACK TANKINI

Style: TKEL7
 Sizes/Grandeurs:
 Adult/Adulte: 8 to/à 20
 Colors/Couleurs:
 420 blue/bleu
 610 red/rouge
 310 green/vert
 510 purple/mauve
 710 gold/jaune



D. CROSS-OVER TANK

Style: TXEL7
 Sizes/Grandeurs:
 Adult/Adulte: 8 to/à 20
 Colors/Couleurs:
 420 blue/bleu
 610 red/rouge
 710 gold/jaune





Smoke

AQUA TANK FRONT PRINT

Style: TCSM7
Sizes/Grandeurs:
Adult/Adulte: 8 to/à 20

SQUARE NECK TANKINI W/ SKIRT

Style: TKSM7
Sizes/Grandeurs:
Adult/Adulte: 8 to/à 20
Colors/Couleurs:
420 blue/bleu
610 red/rouge



Phoenix

V-NECK V-BACK TANK

Style: TVPH7
 Sizes/Grandeurs:
 Adult/Adulte: 8 to/à 20
 Plus: 22 to/à 26

U-BACK TANK **NEW BODY**

Style: TCPH7
 Sizes/Grandeurs:
 Adult/Adulte: 8 to/à 20
 Colors/Couleurs:
 420 blue/bleu
 610 red/rouge
 310 green/vert



The leg line of the suit differs from the picture.

Le niveau d'échancrure du maillot est différent de sur la photo.

Professor X

AQUA TANK FRONT PRINT

Style: TCPR7
 Sizes/Grandeurs:
 Adult/Adulte: 8 to/à 20
 Long: 8L to/à 20L



Hurricane

AQUA TANK II

Style: TAHU7
 Sizes/Grandeurs:
 Adult/Adulte: 8 to/à 20
 Colors/Couleurs:
 420 blue/bleu
 610 red/rouge
 310 green/vert



V-NECK TANKINI W/ SKIRT

Style: TKHU7
 Sizes/Grandeurs:
 Adult/Adulte: 8 to/à 20
 Colors/Couleurs:
 420 blue/bleu
 610 red/rouge





Predator

FEMALE WATER POLO ZIPPERBACK

Style: WWP6
Sizes: 22-40

MALE WATER POLO RACER

Style: RWP6
Sizes: 24-36

MALE WATER POLO JAMMER

Style: SWPS6
Sizes: 24-38

Colors:
001 Black
401 Navy
428 Royal
86% Nylon/14% Lycra®
Lined



TYR Storm

FEMALE HALF ZIP WATER POLO TANK

Style: TSTM6
Sizes: 22-40

Color:
001 Black
Body: 86% Nylon/14% Lycra®
Insert: 50% Neoprene/30% Nylon/
16% Polyester/4% Spandex
Lined

MALE WATER POLO BRIEF

Style: RST06
Sizes: 24-38

Color:
001 Black
100% Polyester
Lined



WATER POLO CAP

home-away set
Style: LWPSET
Master cap set (28 units) covers both home and away caps (numbers 2-13 plus goalie cap #1 and replacement cap #13)
Color/Couleur:
473 Royal (home) and White (away) sets.

home-away extender set
Style: LWPSETEX
Extender cap set (18 units) covers both home and away caps (numbers 14-21 plus goalie cap #1A)
Color/Couleur:
473 Royal (home) and White (away) sets.



WATER POLO BALL

Style: LBALL
Available in official size 5 only.
TYR water polo balls are designed to meet all USWP and FINA standards. Features:
• Natural rubber cover for durability.
• Hand buffed finish for better grip and handling.
• Self-sealing and lubricating replaceable valve.
Color/Couleur:
720 Yellow / jaune

Training 2.0™

Iswimⁱⁿottawa.com 

www.swimottawa.com
Email: service@swimottawa.com



Skull Poly New

SKULL POLY MESH TRAINER

Style: SSKU2
 Sizes/Grandeurs: 26-40
 Colors / Couleurs
 001 black/noir
 610 red/rouge



Camo Poly New

CAMO POLY MESH TRAINER

Style: SCAM2
 Sizes/Grandeurs: 26-40
 Color/Couleur:
 290 Camo Green/vert camo



POLY MESH TRAINER

Style: SPMT2
 Sizes/Grandeurs:
 Adult/Adulte: 28 to/à 40
 Colors / Couleurs
 001 black/noir
 401 navy/marine
 428 royal
 610 red/rouge



NYLON RACER

Style: RSN2
 Sizes/Grandeurs:
 Youth/Enfant: 8/22 to/à 14/28
 Adult/Adulte: 30 to/à 40
 Colors / couleurs
 001 Black/noir
 401 Navy/marine
 428 Royal



SWIM SHORT/RESISTANCE SHORT

Style: SHS2
 Sizes/Grandeurs: XS-XL
 Colors/couleurs
 001 Black/noir
 401 Navy/marine
 428 Royal
 610 Red/rouge



RESISTANCE TRAINER

Style: SDRA2
 Sizes/Grandeurs: XS-XL
 Color/Couleur:
 001 Black/noir



Guards



A. MALE LYCRA ELEMENT SHIRT
 Style: TGML
 without logo/sans logo: TGMM
 Sizes/Grandeurs: XS-XL
 Color/Couleur: 100 white/blanc



B. MALE T-SHIRT
 Style: TGMT
 Sizes/Grandeurs: M-XL
 Color/Couleur: 100 white/blanc
 100% Cotton



C. GUARD AERO TRUNK
 Style: TGTR
 Sizes/Grandeurs: S-XL
 Colors/Couleurs: 408 Navy-white/marine-blanc
 641 Red-white/rouge-blanc



D. GUARD MICROFIBER DECK SHORT
 Style: SAILG
 Sizes/Grandeurs: S-XL
 Colors/Couleurs: 610 red/rouge
 401 navy/marine
 001 black/noir

GUARD EVOLUTION BOARDSHORT
 Style: TSEVG (not shown)
 Sizes/Grandeurs: 30-38
 Colors/Couleurs: 408 Navy-white/marine-blanc
 641 Red-white/rouge-blanc



GUARD CAP
 Style: LGCP
 Sizes/Grandeurs: S/M, M/L, L/XL
 Colors/Couleurs: 610 red/rouge
 401 navy/marine



GUARD HIP PACK
 Style: LGHP
 Size/Grandeur: One Size
 Colors/Couleurs: 610 red/rouge
 401 navy/marine



C.



A. MAXBACK

Style: MGDF
 Sizes/Grandeurs: 30-40
 Colors/Couleurs:
 610 red/rouge
 401 navy/marine
 001 black/noir

B. WOB MAXBACK

Style: BGDF
 Sizes/Grandeurs: 6-14
 Colors/Couleurs:
 610 red/rouge
 401 navy/marine

DIAMONDBACK

Style: DGPL (not shown)
 Sizes/Grandeurs: 30-40
 Colors/Couleurs:
 401 navy/marine
 408 navy-white/marine-blanc
 610 red/rouge
 641 red-white/rouge-blanc

D.



C. MICROBACK NEW

Style: DGMI
 Sizes/Grandeurs: 30-40
 Colors/Couleurs:
 408 Navy-white/marine-blanc
 641 Red-white/rouge-blanc

D. FEMALE T-SHIRT

Style: TGFT
 Sizes/Grandeurs: S-XL
 Color/Couleur:
 100 white/blanc
 100% Cotton

E.



E. FEMALE LYCRA ELEMENT SHIRT

Style: TGFL
 without logo/sans logo: TGFM
 Sizes/Grandeurs: XS-XL
 Color/Couleur:
 100 white/blanc

F. FEMALE LONG BOARDSHORT

Style: SGLB
 without logo/sans logo: SGLM
 Sizes/Grandeurs: XS-XL
 Colors/Couleurs:
 610 red/rouge
 401 navy/marine

G. FEMALE BOARDSHORT

Style: SGBS
 without logo/sans logo: SGBM
 Sizes/Grandeurs: XS-XL
 Colors/Couleurs:
 610 red/rouge
 401 navy/marine



LOGOS DISPONIBLES / AVAILABLE LOGOS



F.



G.



Apparel

A. FEMALE WARM-UP JACKET

Style: WAFJ2
 Sizes/Grandeurs: XS-XL

B. MALE WARM-UP JACKET

Style: WAMJ2
 Sizes/Grandeurs: S-XXL

C. FEMALE WARM-UP PANTS

Style: WAFP2
 Sizes/Grandeurs: XS-XL

D. MALE WARM-UP PANTS

Style: WAMP2
 Sizes/Grandeurs: S-XXL

YOUTH WARM-UP SET

(Not shown)
 Style: WAYS2
 Sizes/Grandeurs: S-L

Colors/Couleurs:
 001 Black
 401 Navy
 428 Royal
 470 Royal/Gold
 610 Red
 100% Polyester



E. FEMALE POLO NEW

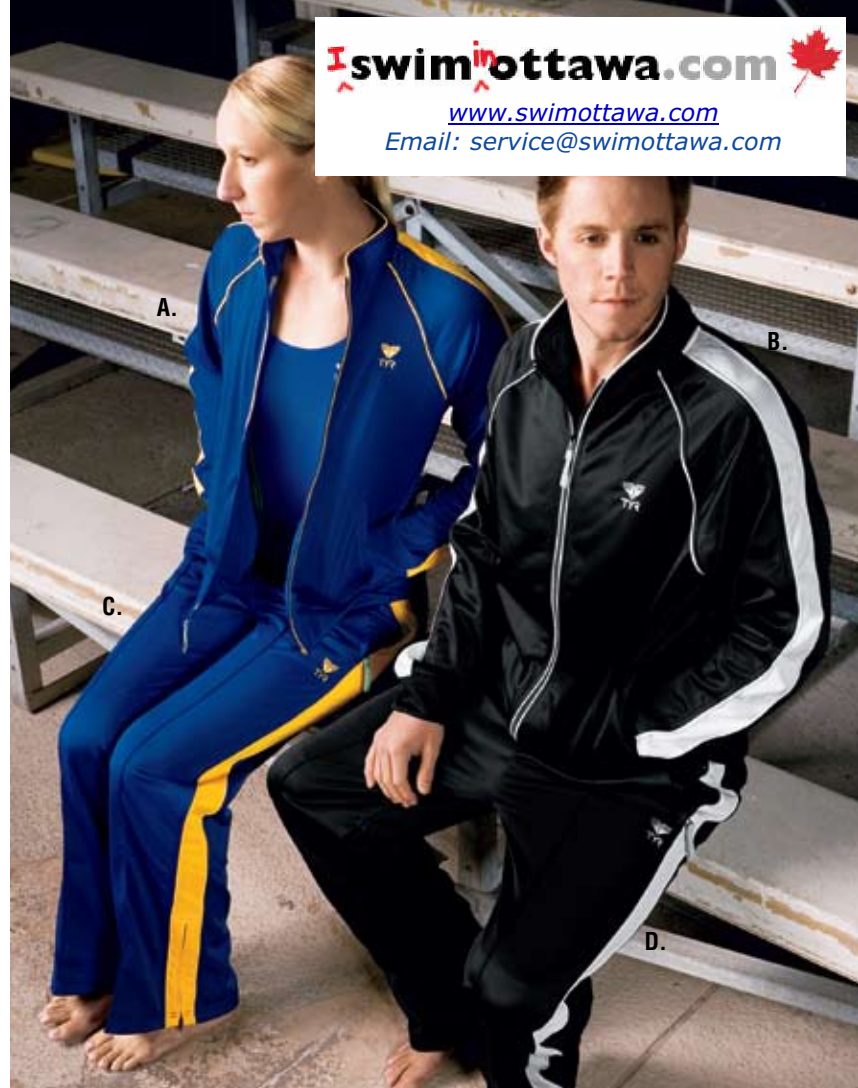
Style: TFPOL6
 Sizes/Grandeurs: XS-XL

F. MALE POLO NEW

Style: TPOL6
 Sizes/Grandeurs: M-XXL

Colors/Couleurs:
 001 Black
 100 White
 401 Navy

100% Polyester



swimottawa.com
www.swimottawa.com
 Email: service@swimottawa.com



G.

G. PARKA

Style: WASP2

Sizes/Grandeurs: XXS-XL (Unisex)



H.

H. WARM WEAR JACKET

Style: WAWJ2

Sizes/Grandeurs: XS-XXL (Unisex)

Colors/Couleurs:

001 black/noir

401 navy/marine

428 royal

610 red/rouge

Men's Shorts

SPLICED WAIST MICROFIBER TRUNK

Style: TTSP5

Sizes/Grandeurs:

Adult/Adulte: S to/à XL

Colors/Couleurs:

005 black-red-charcoal/noir-rouge-charbon

491 navy-turquoise-white/marine-turquoise-blanc

243 brown-sand-khaki/brun-sable-khaki



DRAGONFLY MICROFIBER BOARDSHORT

Style: TDRA5

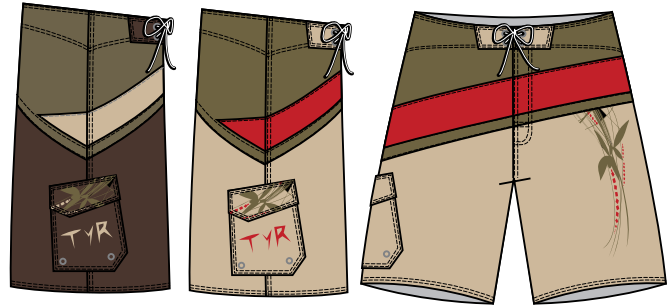
Sizes/Grandeurs:

Adult/Adulte: 30 to/à 38

Colors/Couleurs:

243 brown-sand-khaki/brun-sable-khaki

262 sand-orange-khaki/sable-orange-khaki



ARROW MICROFIBER TRUNK

Style: TAR05

Sizes/Grandeurs:

Adult/Adulte: S to/à XL

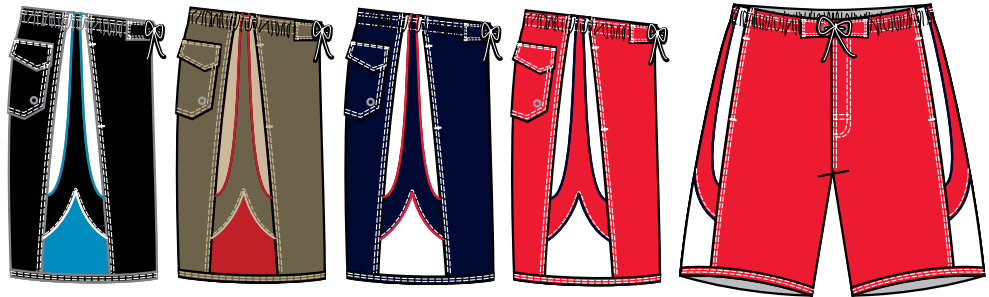
Colors/Couleurs:

009 black-turq.-white/noir-turq.-blanc

329 khaki-orange-sand/khaki-orange-sable

408 navy-white/marine-blanc

641 red-white/rouge-blanc



BOMBORA HIBISCUS MICROFIBER TRUNK

Style: TTHT5

Sizes/Grandeurs:

Adult/Adulte: S to/à XL

Color/Couleur:

200 brown/brun



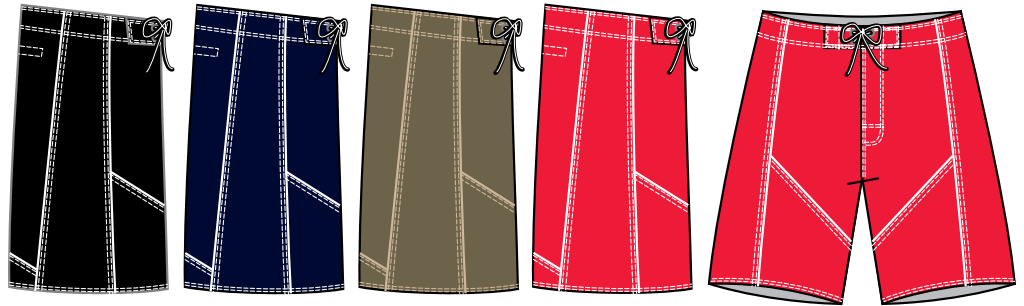
**SPLICED WAIST
 MICROFIBER TRUNK**

Style: DKSP5
 Sizes/Grandeurs:
 Adult/Adulte: S to/à XL
 Colors/Couleurs:
 034 black-charcoal/noir-charbon
 408 navy-white/marine-blanc
 328 khaki-brown/khaki-brun



**EVOLUTION MICROFIBER
 BOARDSHORT**

Style: TSEV5
 Sizes/Grandeurs:
 Adult/Adulte: 30 to/à 38
 Colors/Couleurs:
 060 black-white/noir-blanc
 408 navy-white/marine-blanc
 327 khaki-sand/khaki-sable
 641 red-white/rouge-blanc



**FLAT FRONT SOLID
 MICROFIBER TRUNK**

Style: TTSE5
 Sizes/Grandeurs:
 Adult/Adulte: S to/à XL
 Colors/Couleurs:
 060 black-white/noir-blanc
 403 navy-sand/marine-sable
 264 sand-khaki/sable-khaki
 217 brown-sand/brun-sable



**EVOLUTION
 MICROFIBER SHORT**

Style: TSES5
 Sizes/Grandeurs:
 Adult/Adulte: S to/à XL
 Colors/Couleurs:
 011 black-sand/noir-sable
 403 navy-sand/marine-sable
 217 brown-sand/brun-sable
 615 rust-sand/rouille-sable



See price list to know which styles are available in children and youth sizes.

Consultez la liste de prix pour savoir quels styles sont disponibles en tailles pour enfants et jeunes.

Multi Sport

swimottawa.com 

www.swimottawa.com
Email: service@swimottawa.com



A. MAXBACK WOB TOP

Style: MTST6A
Sizes/Grandeurs:
Adult/Adulte: XS to/à XL
Colors/Couleurs:
123 black-lilac/noir-lilas
384 navy-lime/marine-lime
100 white/blanc
001 black/noir



B. WOB BOTTOM WITH PAD

Style: MTSB6A
Sizes/Grandeurs:
Adult/Adulte: XS to/à XL
Colors/Couleurs:
123 black-lilac/noir-lilas
384 navy-lime/marine-lime
001 black/noir



A. FEMALE SINGLET

Style: SS0L6A
 Sizes/Grandeurs:
 Adult/Adulte: XS to/à XL
 Colors/Couleurs:
 123 black-lilac/noir-lilas
 384 navy-lime/marine-lime
 100 white/blanc

B. TANKINI TOP

Style: TKS06A
 Sizes/Grandeurs:
 Adult/Adulte: XS to/à XL
 Colors/Couleurs:
 123 black-lilac/noir-lilas
 384 navy-lime/marine-lime

C. MAXBACK WITH PAD

Style: MTS06A
 Sizes/Grandeurs:
 Adult/Adulte: XS to/à XL
 Colors/Couleurs:
 123 black-lilac/noir-lilas
 384 navy-lime/marine-lime

D. FEMALE TRIATHLON SUIT

Style: TSS06A
 Sizes/Grandeurs:
 Adult/Adulte: XS to/à XL
 Colors/Couleurs:
 123 black-lilac/noir-lilas
 384 navy-lime/marine-lime



A. MALE SINGLET

Style: SSLD6A
 Sizes/Grandeurs:
 Adult/Adulte: S to à XXL

Colors/Couleurs:
 610 black-red-white/noir-rouge-blanc
 093 black-blue-white/noir-bleu-blanc
 459 navy-grey-white/marine-gris-blanc
 100 white/blanc

B. MALE TANK TOP

Style: TL5M6A
 Sizes/Grandeurs:
 Adult/Adulte: S to à XL

Colors/Couleurs:
 610 black-red-white/noir-rouge-blanc
 093 black-blue-white/noir-bleu-blanc
 459 navy-grey-white/marine-gris-blanc

C. RACER WITH PAD

Style: RSS06A
 Sizes/Grandeurs:
 Adult/Adulte: S to à XL

Colors/Couleurs:
 001 black/noir
 401 navy/marine



MALE TRIATHLON SUIT

Style: STSS6A
Sizes/Grandeurs:
Adult/Adulte: S to/à XL
Colors/Couleurs:
610 black-red-white/noir-rouge-blanc
093 black-blue-white/noir-bleu-blanc
459 navy-grey-white/marine-gris-blanc



UNISEX 9" RACE SHORTS

Style: RSNI6
Sizes/Grandeurs:
Adult/Adulte: XS to/à XL
Color/Couleur:
001 black/noir



UNISEX 5" RACE SHORTS

Style: RSFI6
Sizes/Grandeurs:
Adult/Adulte: XS to/à XL
Color/Couleur:
001 black/noir



Clown Fish



CAMI

Style: ZNE
 Sizes/Grandeurs:
 Girl/Fillette: 2 to/à 6x
 Color/Couleur:
 960 multi



BIKINI

Style: BNE
 Sizes/Grandeurs:
 Girl/Fillette: 2 to/à 6x
 Color/Couleur:
 960 multi



SWIMDRESS

Style: DNE
 Sizes/Grandeurs:
 Girl/Fillette: 2 to/à 6x
 Color/Couleur:
 960 multi



SQUARE LEG SUIT

Style: SNE
 Sizes/Grandeurs:
 Boy/Garçon: 2 to/à 6x
 Color/Couleur:
 960 multi



BRIEF

Style: RNE
 Sizes/Grandeurs:
 Boy/Garçon: 2 to/à 6x
 Color/Couleur:
 960 multi

Whales



CAMI

Style: ZWH
 Sizes/Grandeurs:
 Girl/Fillette: 2 to/à 6x
 Colors/Couleurs:
 670 pink/rose
 420 blue/bleu



BIKINI

Style: BWH
 Sizes/Grandeurs:
 Girl/Fillette: 2 to/à 6x
 Colors/Couleurs:
 670 pink/rose
 420 blue/bleu



SWIMDRESS

Style: DWH
 Sizes/Grandeurs:
 Girl/Fillette: 2 to/à 6x
 Colors/Couleurs:
 670 pink/rose
 420 blue/bleu

Flower Power



CAMI
 Style: ZFO
 Sizes/Grandeurs: Girl/Fillette: 2 to/à 6x
 Color/Couleur: 670 pink/rose



BIKINI SQ. LEG BOTTOM
 Style: BFO
 Sizes/Grandeurs: Girl/Fillette: 2 to/à 6x
 Color/Couleur: 670 pink/rose



SWIMDRESS
 Style: DFO
 Sizes/Grandeurs: Girl/Fillette: 2 to/à 6x
 Color/Couleur: 670 pink/rose



RASHGUARD
 Style: RFO
 Sizes/Grandeurs: Girl/Fillette: S, M, L
 Color/Couleur: 670 pink/rose



COVER-UP SKIRT
 Style: PFO
 Sizes/Grandeurs: Girl/Fillette: S, M, L
 Color/Couleur: 670 pink/rose

Cherries



CAMI
 Style: ZCH
 Sizes/Grandeurs: Girl/Fillette: 2 to/à 6x
 Color/Couleur: 960 multi



BIKINI SQ. LEG BOTTOM
 Style: BCH
 Sizes/Grandeurs: Girl/Fillette: 2 to/à 6x
 Color/Couleur: 960 multi



SWIMDRESS
 Style: DCH
 Sizes/Grandeurs: Girl/Fillette: 2 to/à 6x
 Color/Couleur: 960 multi



RASHGUARD
 Style: RCH
 Sizes/Grandeurs: Girl/Fillette: S, M, L
 Color/Couleur: 960 multi



COVER-UP SKIRT
 Style: PCH
 Sizes/Grandeurs: Girl/Fillette: S, M, L
 Color/Couleur: 960 multi

Youth Solids



A. SPLICE SPORTBACK

Style: T102
 Sizes/Grandeurs: Girl/Fille: 6 to/à 16

HALTER TOP BIKINI

Style: T606 (not shown)
 Sizes/Grandeurs: Girl/Fille: 6 to/à 16

SQUARE LEG TANKINI

Style: T810 (not shown)
 Sizes/Grandeurs: Girl/Fille: 6 to/à 16

Colors/Couleurs:
 452 sky bl.-apple-white/bl. ciel-pomme-blanc
 631 rasp.-pink-white/framb.-rose-blanc
 219 brown-sky bl.-white/brun-bl. ciel-blanc
 436 steel bl.-sky bl.-white/bl. acier-bl. ciel-blanc





Solids

A.



A. FLEXBACK

Style: T100
 Sizes/Grandeurs:
 Girl/Fille: 4 to/à 16
 Colors/Couleurs:
 001 black/noir
 401 navy/marine
 425 royal
 440 turquoise
 451 sky blue/bleu ciel
 610 red/rouge
 628 raspberry/framboise
 308 apple/pomme
 210 brown/brun

B. SPLICE VAPORBACK

Style: T410
 Sizes/Grandeurs:
 Girl/Fille: 6 to/à 16
 Colors/Couleurs:
 002 black-red-white/noir-rouge-blanc
 466 navy-apple-white/marine-pomme-blanc
 436 steel bl.-sky bl.-white/bl. acier-bl. ciel-blanc
 452 sky blue-apple-white/bleu ciel-pomme-blanc
 631 rasp.-pink-white/framb.-rose-blanc
 219 brown-sky blue-white/brun-bleu ciel-blanc
 413 navy-orange-yellow/marine-orange-jaune



B.





A. SPLICE MAXBACK

Style: T610
 Sizes/Grandeurs: Girl/Fille: 6 to/à 16
 Colors/Couleurs:
 002 black-red-white/noir-rouge-blanc
 492 royal-turq.-apple/royal-turq.-pomme
 452 sky bl.-apple-white/bl. ciel-pomme-blanc
 631 rasp.-pink-white/framb.-rose-blanc
 307 apple-sky bl.-white/pomme-bl. ciel-blanc
 006 black-royal-white/noir-royal-blanc
 466 navy-apple-white/marine-pomme-blanc

B. SPLICE SPORTBACK

Style: T210
 Sizes/Grandeurs: Girl/Fille: 6 to/à 16
 Colors/Couleurs:
 002 black-red-white/noir-rouge-blanc
 466 navy-apple-white/marine-pomme-blanc
 413 navy-orange-yellow/marine-orange-jaune
 631 rasp.-pink-white/framb.-rose-blanc
 436 steel bl.-sky bl.-white/bl. acier-bl. ciel-blanc



Goggles

User categories

<p>RACING</p> <p>Competitive swimmers and racers favor goggle models in this category.</p> <p>Les nageurs compétitifs préfèrent les lunettes de cette catégorie.</p>	<p>PERFORMANCE</p> <p>Designed to fit a wide range of facial types and sizes with comfort being a key attribute. Can be used for both training and racing.</p> <p>Fabriquées pour faire confortablement à différents types de visages. Peuvent être utilisées pour l'entraînement et la compétition.</p>	<p>FEMALE</p> <p>Specifically designed to fit smaller facial contours and narrower eye focal widths.</p> <p>Créées spécialement pour faire à des visages plus étroits avec moins d'espace entre les yeux.</p>	<p>JUNIOR / YOUTH</p> <p>Designed to fit children, youths and adults with smaller facial features.</p> <p>Fabriquées pour faire aux enfants, aux jeunes ainsi qu'aux adultes aux visages plus petits.</p>	<p>WATER SPORTS</p> <p>Category users include triathletes, recreational water enthusiasts, open water and fitness swimmers.</p> <p>Les utilisateurs de cette catégorie sont entre autres des triathlètes, des amateurs des sports d'eau et des nageurs</p>



TORRENT™ NEW

The Torrent goggle combines wide-angle, low-profile lens with a single-edge racing gasket and hydrodynamic wrap nosebridge for a comfortable, no-leak fit.

- Contour wrap nosebridge has been engineered at a 25-degree angle to reduce friction resistance. Three interchangeable size nose pieces.
- Double VTS (Varied Tensile Strength) silicone headstrap conforms to side of head while flat back straps allow for secure fit.
- Optical-grade polycarbonate lenses are low-profile and provide wide-angle race viewing. Lenses are anti-fog and UV protected.
- Single-edge Thermoplastic Rubber (TPR) gaskets are attached along the inner lens edge to reduce resistance and not obstruct vision.

Style: LGTORR
041 Smoke
101 Clear
420 Blue



ADVANT

The Advant features breakthrough double-layer gasket technology that provides a comfortable, leak-proof seal. This is achieved by integrating a stabilizing silicone ring between two thin layers of high-density neoprene racing foam.

- Low profile, wide peripheral-vision frame features a multi-sized nosepiece.
- Optical grade polycarbonate lenses are anti-fog and UV protected.
- Double, silicone headstrap features side sleeves and patented top slotted clip to prevent strap slippage and allow for easy adjustment.
- Recommended for racing and elite training.

Style: LGAD
041 smoke
101 clear
420 blue
441 aqua

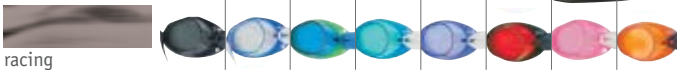


SOCKET ROCKETS™ 2.0

This sleek and streamlined SWEDISH type design continues to be the #1 racing goggle choice worldwide and it's no surprise. It comes assembled and features a TPR cushion gasket for a superior, low profile fit that refuses to leak. It also boasts unobstructed 180 degree peripheral vision.

- Low profile, wide peripheral-vision lenses.
- Optical grade polycarbonate lenses are UV protected.
- Easy-to-fit socket design features soft TPR gaskets and a double latex headstrap.
- Includes optional string nosepiece.

Style: LGL2
041 smoke/black
105 clear/translucent blue
420 blue/translucent green
441 aqua/translucent blue
510 purple/translucent purple
610 red/black
660 rose/pink
700 amber/translucent amber



SOCKET ROCKETS™ 2.0 METALLIZED

Offers the same great features as Socket Rockets™ 2.0, plus the anti-glare properties and the benefits of anti-fog coating. Socket Rockets™ 2.0 Metallized comes in three exciting

elemental colorways, Ice, Fire and Ocean. Has Clear Mirror Technology, which works well for indoor use and features an innovative and unique mirrored coating.

- Low profile, wide peripheral-vision lenses.
- Optical grade polycarbonate lenses are UV protected.
- Easy-to-fit socket design features soft TPR gaskets and a double latex headstrap.
- Includes optional string nosepiece.

Style: LGL2M
150 clear mirror ice
160 metallic fire
161 metallic ocean



AQUA SHIFT™ ROCKETS

The Aqua Shift™ Rockets is the only uni-body goggle designed specifically for racing and features unequalled dual headstrap posts for the perfect, non-slip fit. Leaking is non-existent, while comfort and fit has never felt better. It also boasts unobstructed 180-degree peripheral vision. So now you'll have an impeccable view of just how far back your competition is.

- Easy-to-fit socket design requires no adjustment.
- Low profile, wide peripheral vision lenses have soft Thermo Plastic Rubber (TPR) gaskets.
- Flexible and lightweight frame.
- Optical grade polycarbonate lenses are anti-fog and UV protected.
- Double headstraps with tension elastic memory for a comfortable, secure fit.

Style: LGAQS
041 smoke
101 clear
420 blue



AQUA SHIFT™ ROCKETS METALLIZED

Aqua Shift Rockets Metallized offers the same great features as our Aqua Shift Rockets goggle with the addition of advanced anti-glare properties.

- Easy-to-fit socket design requires no adjustment.
- Double headstraps with tension elastic memory for a comfortable, yet secure fit.
- Low profile, wide peripheral vision lenses have soft Thermo Plastic Rubber (TPR) gaskets.
- Flexible and lightweight frame.
- Optical grade polycarbonate lenses are anti-fog and UV protected.
- Double headstraps with tension elastic memory for a comfortable, yet secure fit.

Style: LGAQSM
165 silver/black
161 ocean metallic/blue



VELOCITY

Advanced, dual headstrap performance design offers low profile hydrodynamics, with patented cushion gaskets for a comfortable, leak-proof fit.

- Racing frame features patented silicone cushion gaskets and a multi-sized nosepiece system for customized fit.
- Optical grade polycarbonate lenses provide excellent peripheral vision, are anti-fog and UV protected.
- Double, silicone headstrap features patented top slotted clip to prevent strap slippage and allow easy adjustment.

Style: LGV
041 smoke
101 clear
420 blue
670 pink



VELOCITY METALLIZED

Velocity Metallized offers the same great features as our velocity goggle with the addition of advanced anti-glare and anti-fog properties.

- Racing frame features patented silicone cushion gaskets and a multi-sized nosepiece system for a customized fit
- Optical grade polycarbonate lenses provide excellent peripheral vision, are anti-fog and UV protected.
- Double, silicone headstrap features patented top slotted clip to prevent strap slippage and allow easy adjustment.

Style: LGVM
095 metallized silver
481 metallized ice blue
661 metallized pink



RACETECH®

Racetech is the standard by which other goggles' fit is measured and is the choice for both competitive and recreational swimmers. The Racetech fits everyone from eight to eighty years of age, with its low profile design and comfortable split headstrap.

- Low profile, wide angle anti-fog lenses, leak-proof TPR gaskets.
- Universal fit, easy adjust sideclips and UV protection.
- Split latex headstrap for a comfortable fit

Style: LGR
041 smoke
101 clear
420 blue
441 aqua
531 lavender
660 rose
700 amber



RACETECH® METALLIZED

Racetech Metallized offers the same great features as our Racetech goggle with the addition of advanced anti-glare properties.

- Low profile, wide angle anti-fog lenses, leak-proof silicone gaskets.
- Universal fit, easy adjust sideclips and UV protection.
- Soft, split silicone headstrap for a comfortable fit

Style: LGRM
075 silver / black
481 blue / ice blue
661 raspberry / pink



BLING GOGGLE NEW

Add a little “bling” to your swim by putting on a pair of these exciting new training goggles! You’re sure to make a scene with any of the unique designs. Adventurous or sweet, playful or glamorous, each charm is designed for fun and the expressions of your own personality!

Patent Pending.

- Elliptical shaped lenses provide universal fit.
- Soft, silicone gaskets for comfortable, water-tight fit.
- Silicone split headstrap
- Optical-grade polycarbonate lenses are anti-fog and UV protected.

Style: LGBLING
 041 Smoke/Skull
 420 Blue/Dolphin
 670 Pink/Heart



performance

X-SIGHT™ LITE

The X-Sight Lite is an aggressive design from the popular X-Sight family. The X-Sight Lite uses the same innovative uni-body design combined with Glideskin neoprene gaskets, as the X-Sight, which provides a leak-proof, custom fit.

- Smaller frame fits wide range of faces from youth to adult.
- Non-surround, suspended lens provides for light absorption and a wider field of vision.
- Durable, split TPR headstrap.
- Optical grade, polycarbonate lenses are anti-fog and UV protected.
- Designed for racing, training and triathletes.

Style: LGXSITEL
 041 smoke/silver
 101 clear/pearlized white
 465 blue/translucent yellow
 660 rose/pink
 531 lavender/pearlized white



performance



RACETECH® REVEAL

This uni-body, flexible frame goggle features a unique half-frame design that exposes the lenses, allowing in more light for improved peripheral vision. Features a unique dual compression headstrap.

- Pliable, one-piece Silicone FlexFrame™ is hypo-allergenic and requires no adjustments providing a universal fit.
- Unique half-frame design is light weight and offers greater optical clarity and improved peripheral vision.
- New and unique dual injected, split headstrap.

Style: LGREV
 041 smoke
 101 clear
 420 blue



performance



TECHNOFLEX® VISION™

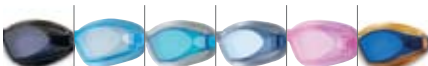
Aggressive design and shape increases peripheral vision and light absorption, vulcanized lens and frame gives the goggle a leak-proof seal. The Technoflex Vision has a universal fit recommended for youth and adults.

- Pliable, one-piece TPR FlexFrame™ is hypo-allergenic.
- Optical grade, low profile polycarbonate lenses are anti-fog and UV protected.
- Durable, split silicone headstrap provides a comfortable yet secure fit.
- Easy adjust integral double T-slot sideclips allow for quick, secure adjustment.

Style: LGXVIS
 041 smoke / black
 101 clear / ice blue
 420 blue / silver
 450 ice blue / pearlized white
 660 rose / pink
 410 dark blue / gold



performance



TECHNOFLEX® 2.0

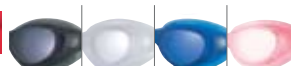
The Technoflex® 2.0 revolutionizes goggle performance with next generation, soft frame technology. Using an innovative bonding system that vulcanizes lens and frame components resulting in a leak-proof, low profile goggle for both racing and training.

- Pliable, one-piece Thermo Plastic Rubber (TPR) FlexFrame™ is hypo-allergenic.
- Optical grade, low profile polycarbonate lenses are anti-fog and UV protected.
- Durable, split TPR headstrap provides a comfortable yet secure fit.
- Easy adjust T-slot sideclips allow for quick, secure adjustment.
- The Technoflex features a larger frame size, recommended for adults.

Style: LGX2
 041 smoke / smoke
 101 clear / clear
 420 blue / translucent blue
 660 clear / rose



performance



TECHNOFLEX® 2.0 JR.

The Technoflex 2.0 Jr. has the same great features as the Technoflex goggle, but with a smaller more compact size, perfect for swimmers with smaller faces and children.

- Pliable, one-piece Thermo Plastic Rubber (TPR) FlexFrame™ is hypo-allergenic and offers a leak-proof, custom fit.
- Optical grade, low profile polycarbonate lenses are anti-fog and UV protected.
- Durable, split TPR headstrap provides a comfortable yet secure fit.
- Easy adjust T-slot sideclips allow for quick, secure adjustment.

Style: LGX2Y
 041 smoke / smoke
 085 smoke / fluorescent green
 101 clear / clear
 465 blue / translucent yellow
 670 lagoon blue / bright pink



TECHNOFLEX® 2.0 JR. META

Technoflex 2.0 Jr. Metallized offers the same great features as our Technoflex 2.0 Jr. goggle with the addition of advanced anti-glare properties.

- Pliable, one-piece Thermo Plastic Rubber (TPR) FlexFrame™ is hypo-allergenic and offers a leak-proof, custom fit.
- Optical grade, low profile polycarbonate lenses are anti-fog and UV protected.
- Durable, split TPR headstrap provides a comfortable yet secure fit.
- Easy adjust T-slot sideclips allow for quick, secure adjustment.

Style: LGX2YM
 036 graphite silver
 161 ocean / translucent blue



CORRECTIVE OPTICAL

TYR's Corrective Optical is a distinctive "step diopter" goggle in spherical prescription lens options. It features a universal eye socket frame design for superior fit.

- Wide angle, optical grade polycarbonate lenses in corrective diopters (-2.0 through -8.0)
- Comfortable silicone gaskets provide both comfort and leak-proof fit.
- Durable, split silicone headstrap provides a comfortable yet secure fit.
- Easy adjust snap lock sideclips.
- Optical grade polycarbonate lenses are UV protected.

Style: LGOPT
 041 smoke
 101 clear



X-SIGHT™

The X-Sight combines the flexible Thermo Plastic Rubber TPR uni-body frame with the comfort of neoprene gaskets and a unique flexible nose bridge design. The X-Sight features a larger frame size, recommended for adults.

- Ultra smooth Glideskin neoprene gaskets reduce skin marks and create a water-tight fit.
- Non-surround, suspended lens increases light absorption.
- Features lens within-a-lens for improved peripheral vision.
- Durable, split TPR head strap provides a comfortable, yet secure fit.
- Optical grade polycarbonate lenses are anti-fog and UV protected.

Style: LGXSITE
 041 smoke
 101 clear
 420 blue



Style: LGXSITEM
 036 metalized silver



RACEFLEX

A revolution in racing goggle design, the Raceflex combines soft frame technology with advanced racing dynamics. The result is a low profile, high performance uni-body goggle with superior fit and optical properties.

- Pliable, hypo-allergenic one-piece Thermo Plastic Rubber (TPR) FlexFrame™ features extra durable lens-frame adhesion to provide a leak-proof custom fit.
- Optical grade, flush mounted polycarbonate lenses are anti-fog and UV protected.
- Durable, split silicone headstrap provides a comfortable yet secure fit.
- Recommended for racing, training and triathletes.

Style: LGRF
 041 smoke/translucent smoke
 101 clear/translucent clear
 420 blue/translucent blue
 510 purple/translucent purple



TEAM SPRINT

Features low profile, wide angle socket lenses, comfortable foam gaskets, easy adjust nosepiece, split latex headstrap and UV protection. Excellent fit for children and adults.

- Recommended for training and racing

Style: LGT
 041 smoke
 101 clear
 420 blue





NEST PRO™ NEW

A performance goggle that transcends traditional design. Inspired by the unique bird nest architectural design of Beijing's main stadium for 2008. The structural elements of the Nest Pro's frame create a unique grid-like effect, similar to the way a bird's nest is intertwined for support. TPR frame/gasket features dual-injected system with over-molded nosebridge. Patent Pending Nest Frame Technology.

- Polypropylene over-mold nest frame provides unique high-tech structure design.
- Headstrap features patented Glide Clip system which allows easy on-head adjustment.
- Double VTS (Varied Tensile Strength) silicone headstrap conforms to side of head while flat back straps allow for secure fit.
- Wide peripheral Cellulose Propionate (CP) lenses feature imbedded anti-fog properties and are UV protected.
- Soft TPR gaskets for comfortable, water-tight fit.

Style: LGNST
041 Smoke
101 Clear
420 Blue
670 Pink



performance



CLASSIC FOAM

Small frame specifically designed for children. Features safe, shatter resistant lenses, comfortable foam gaskets, easy adjust sideclips, split latex headstrap and UV protection.

Style: LGC
041 smoke / black
101 clear / black
420 blue / black

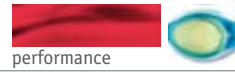


RACEFLEX RAINBOW

A revolution in racing goggle design, the Raceflex combines sport frame technology with advanced racing dynamics. The result is a low profile, high performance uni-body goggle with superior fit and optical properties.

- Pliable, hypo-allergenic one-piece Thermo Plastic Rubber (TPR) FlexFrame™ features extra durable lens-frame adhesion to provide a leak-proof custom fit.
- Optical grade, flush mounted polycarbonate lenses are anti-fog and UV protected.
- Durable, split silicone headstrap provides a comfortable yet secure fit.
- Recommended for racing, training and triathletes.

Style: LGRAIN
420 blue/clear

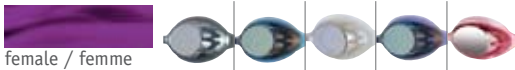


FEMME T-72® ELLIPSE METALLIZED

The Femme T-72 Ellipse has been designed to provide advanced, low profile racing dynamics in addition to outstanding fit and comfort.

- Anatomically designed frame features a universal nosepiece system and leakproof, hypo-allergenic silicone gaskets.
- Optical grade polycarbonate lenses provide excellent peripheral vision, are anti-fog and UV protected.
- Durable, rear adjusting split silicone headstrap allows independent strap adjustment.
- Recommended for racing and elite level female training.

Style: LGFCM
041 metallized smoke
481 metallized blue
750 metallized gold
531 metallized lavender **new**
661 metallized pink **new**



FEMME RACETECH® REVEAL

With the same genetic make-up as the Racetech Reveal, the Femme Racetech Reveal infuses the classic goggle design with refreshing colors. It's a goggle that a girl might not buy just one of – she'll get one in every color.

- Pliable, one-piece Silicone FlexFrame™ is hypo-allergenic and requires no adjustments providing a universal fit.
- Unique half-frame design is lightweight and offers greater optical clarity and improved peripheral vision.
- New and unique dual injected split headstrap.

Style: LGFREV
332 mint/pearlized white
450 ice blue/pearlized blue
531 lavender/pearlized white



FEMME T-72® PETITE

Compact design developed for smaller female and youth faces. Features: polycarbonate lenses, multi-position nosepiece, easy adjust sideclips, soft silicone gaskets, anti-fog and UV protection.

- Recommended for recreational female swimmers.
- Now with a new and unique dual injected split headstrap.

Style: LGFP
041 smoke / smoke
101 clear / ice blue
420 blue / light blue
660 rose / light pink





SWIMPLE

- Small, uni-body frame is designed specially for children.
- Easy-to-fit, pliable silicone frame requires no adjustment.
- Easy adjust release button allows for no fuss headstrap adjustment.
- Split headstrap provides a comfortable, secure fit.
- Soft hypo-allergenic silicone gaskets provide watertight seal.
- Optical grade, polycarbonate lenses are anti-fog and UV protected lenses.

Style: LGSW
 085 smoke/green
 105 clear/translucent blue
 420 blue/translucent clear
 660 rose/translucent clear



junior

SWIMPLE™ METALLIZED NEW

The Swimple Metallized goggle offers the same great features as the Swimple with the addition of advanced anti-glare properties.

Style: LGSWM
 095 Metallized Silver
 481 Metallized Blue
 661 Metallized Pink



junior

YOUTH FLEXFRAME

Small, uni-body frame is designed specially for children. Features easy-to-fit, pliable silicone frame that requires no adjustment. Split headstrap for secure fit includes easy adjust sideclips. Safe, shatter resistant lenses are anti-fog and UV protected.

- Recommended for children and smaller adult faces.

- Style: LGYFLX
 042 smoke / pink
 085 smoke / multi green
 101 clear / multi
 419 blue / navy
 420 blue / clear
 531 lavender / clear



YOUTH FLEXFRAME METALLI:

Youth Flexframe Metallized offers the same great features as our youth flexframe goggle with the addition of advanced anti-glare properties.

- Recommended for children and smaller adult faces.

- Style: LGYFLXM
 420 metal / blue
 610 metal / red



CHILDREN'S CHARACTER GOGGLES

Children's Character Goggles make swimming fun with playful designs for boys and girls. Features comfortable watertight silicone gaskets, easy adjust side clips and split silicone headstraps. Small, uni-body frame is designed specially for children. Safe, shatter resistant lenses are anti-fog and UV protected.

- colors:
 420 blue / blue
 670 rose / pink
 720 yellow / yellow



LGPEN - penguin



LGSPACE - space aliens



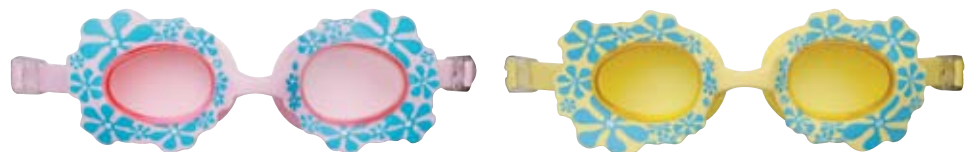
LGFLOWR - flower power



FLOWER POWER NEW

Features fun, flower design with comfortable, watertight silicone gaskets, easy to adjust side clips and split silicone headstraps. Small, uni-body frame is designed specially for children. Safe, shatter resistant lenses are anti-fog and UV protected.

- Style: LGFLWR
 450 Light Blue/Red Flowers
 670 Pink/Aqua Flowers
 720 Yellow/Light Blue Flowers



YOUTH QUALIFIER

The Qualifier features a low profile design with advanced racing dynamics. Offers universal, comfortable fit with soft silicone gaskets, split silicone headstrap, easy adjust side clips and adjustable nosepiece. Safe, shatter resistant lenses are anti-fog and UV protected.

- Recommended for children and smaller adult faces.

Style: LGQUAL
 041 smoke / black
 101 clear / blue
 420 blue / clear
 660 rose / pink
 700 amber / blue



YOUTH FOAM

Small frame specifically designed for children. Features safe, shatter resistant lenses, comfortable foam gaskets, easy adjust sideclips, split latex headstrap and UV protection.

- Recommended for children and smaller adult faces.

Style: LGY
 041 smoke / black
 101 clear / black
 420 blue / black
 510 purple/black
 700 dark amber/black



HYDROVISION

Smaller mask size has a universal fit. Fits both children and adults. Features large lens for maximum visibility. Soft hypo-allergenic silicone gasket skirt provides a watertight seal. Includes nylon mesh pouch for storage and lens protection.

- Features engineered easy-adjust head strap with wide/narrow split and molded grooves to ensure a secure fit.
- Optical grade polycarbonate lenses are anti-fog and UV protected.

Style: LGHMSK
 041 smoke/black
 101 clear/silver
 105 clear/electric blue
 420 blue/light blue
 531 clear/lavender
 322 clear/fluo green



SWIMMASK

Designed specifically for swimming, the oversize anti-fog lens design provides full vertical and peripheral vision. The soft hypo-allergenic silicone gasket skirt maintains a comfortable, yet watertight seal. Includes nylon mesh pouch for storage and lens protection.

- Features engineered easy-adjust head strap with wide/narrow split and molded grooves to ensure a secure fit.
- Optical grade polycarbonate lenses are anti-fog and UV protected

Style: LGMSK
 064 smoke / black-silver
 105 clear / blue frame
 420 blue / clear



Training Equipment & Accessories

CATCH™ PADDLE NEW

Catch Paddles are designed to develop a better feel for the water. Extended side-blade design over exaggerates the “catch phase” of all strokes, making technique imperfections easier to feel. Smaller paddle surface area reduces shoulder stress. Designed to be used in conjunction with regular training paddles. Patent Pending.

- Can be used to improve stroke technique for all four strokes!
- Incorporate into power workouts to develop race-feel and technique at closer to race speeds.
- Multiple strap options allow you to customize paddle to fit your hand as well as exaggerate the stroke’s “catch phase” by increasing the amount of resistance created by extended side-blade. Can size paddle up or down to create more or less exaggerated “catch” during entry phase of stroke.
- Made of lightweight PVC foam for extra flexion. Extra latex strap tubing included.

Style: LCATCH

- XS Green
- S Yellow
- M Red
- L Blue



MENTOR HAND PADDLE

Created and developed by Ron Johnson, (World Record Masters swimmer, former ASU Head Coach, inventor of the Strokemaker™ and Catalyst™ training paddles). The Mentor is perfect for swimmers of all levels, from fitness swimmers to triathletes. This evolutionary, technical paddle is designed to build strength without losing feel, and catches water quicker on the entry phase of the stroke than traditional paddles.

It allows for maximum water feel and teaches you proper stroke techniques as well as specific strength development for all four competitive strokes. All while reducing shoulder stress. Patent Pending.

- Constructed of lightweight PVC foam for added flexion
- Entry / exit holes designed to maximize water feel
- “Alluvial Wing” design helps reduce shoulder stress
- Convex palm dome fits natural swimming hand position
- Wrist strap placement aids in proper stroke recovery
- Multi-hole strap design for custom centering on hand
- Extra strap tubing included

Style: LMENTOR

- XS - green
 - S - yellow
 - M - red
 - L- blue
- Color coded by size.
Patent pending.



CATALYST™ BRITES

New translucent color-coded sizes. The Catalyst helps improve stroke technique while building strength. Its patented unique keyhole design helps more evenly distribute pressure while improving water feel and reducing shoulder stress. Constructed of durable, injection molded, UV resistant polypropylene. Paddle has smooth edges and multi-hole strap design for custom centering on hand. U.S. Patent No. 5,511,998

Style: LVC

Size	Color	Recommended Use*
XXS	Translucent Orange	Beginning swimmers.
XS	Translucent Green	Young age groupers (8-12 years).
S	Translucent Yellow	Older age groupers (12+ years), beginning Masters.
M	Translucent Red	High school males, Sr. National females, mid Masters.
L	Translucent Blue	Collegiate swimmers, Sr. National males.
XL	Translucent Smoke	Very strong swimmers, water aerobics.

* For non-freestyle strokes, size down one paddle size.



CROSSBLADE™ TRAINING FIN NEW

CrossBlade fins are designed as a multi-purpose training fin. The intermediate blade length combines the attributes of both short and long blade fins. Increases tempo and speed while still offering increased resistance to build leg power. Whether you seek technique work or increased power, the CrossBlade is the fin to meet your training needs.

Style: LFCROSS

Male Sizes:

XXS 1-3	Purple	M 7-9	Yellow	XXL 13-15	Light Gray
XS 3-5	Orange	L 9-11	Red	For female equivalent size down 1-2 sizes.	
S 5-7	Green	XL 11-13	Royal		

- Great all-around practice fin. Combines the attributes of both short and long blade training fins.
- Perfect for race-pace training. Allows you to maintain arm and kick tempo at higher speeds, imitating race-speeds in practice.
- Soft rubber foot pocket conforms to foot. Extended size range from youth to adult. For females, size down 1 to 2 sizes.



SPLITFIN™ TRAINING FIN

Our versatile SplitFin Training Fin looks different because it is different. Unlike conventional fins that force the foot to push water in a flat plane, much like an old paddlewheel, the unique split blades slice through the water with two winged surfaces creating lift and forward propulsion much like a propeller. SplitFins operate more efficiently than ‘paddle’ bladed fins by mimicking a user’s natural kicking cadence. This ensures a more even distribution of resistance during the upswing and down thrust motions of the kicking cycle, working both muscle groups equally to help build leg strength and power output.

The SplitFin functions optimally with a tighter, higher frequency kick for maximum performance power and speed training benefit. This type of kick simulates the natural ‘turnover’ rate an athlete can only achieve at race pace. The unique flexible split blade allows sustained intense training over the course of your workout and helps reduce ankle strain, fatigue and cramping often associated with the use of conventional ‘paddle’ fins. With the SplitFin, the possibilities are now as endless as your workout.

Style: LFSPLIT

Male sizes:

XXS 1-2	Purple
XS 3-4	Orange
S 5-6	Green
M 6-7	Yellow
L 8-9	Red
XL 10-11	Blue
XXL 12-13	Smoke
For female equivalent size down 1-2 sizes.	



FLEXFINS™

Flexfins are designed to increase leg strength and foot flexibility. Color coordinated by size for easy identification.

Style: LFN

Male sizes:

XXXS (12-1)	
XXS (1-3)	
XS (3-5)	
S (5-7)	
M (7-9)	
L (9-11)	
XL (11-13)	
XXL (13+)	
For female equivalent size down 1-2 sizes.	



FIN BOOT

Specially designed to be worn with fins. Features: soft, neoprene construction; flat-lock stitching; and a durable, reinforced ankle. Color coordinated by size.

Style: LFS

Male sizes:

S (5-7)	Yellow
M (7-9)	Red
L (9-11)	Blue
XL (11-13)	Green
For female equivalent, size down 1-2 sizes.	



GOGGLE CASE

This durable zippered polyester case features a soft interior to protect goggles and other small accessories.

Style: LGCASE
001 black/noir
428 royal
610 red/rouge (not shown)



ANTI-FOG SPRAY & LENS CLEANER

Specifically formulated solution helps keep goggles and eyeglasses clean and fog free.

Style:
LAF



GOGGLE REPAIR KIT

Includes one split rubber headstrap, nosepiece and two T-slot sideclips. Fits most models requiring strap width of 7/16"

Style: LRK
100 white/blanc



SPEEDRAIL RACING HEADSTRAP KIT

Includes one 3/8" beveled Speedrail double extruded TPR headstrap and one speedclip. UV resistant strap features tacky surface to prevent slippage and maintain a secure fit. Fits racing goggles requiring a double or 3/8" wide headstrap.

Style: LGSSPD
007 black/clear
401 navy/clear
310 green/clear
820 flor. orange/clear



LATEX NOSE CLIP

Comfortable latex covered metal clip with headstrap.

Style: LNC



SWIM CLIP

Stainless steel nose clip with latex coating.

Style: LSC



SOFT PAD NOSE CLIP

Made of pliable soft polycarbonate with soft contact point silicone pads. Features flex adjustment memory for custom fit. Floatable.

Style: LNCPAD
101 clear/clear
105 clear/blue



YOUTH MULTI-COLORED SILICONE EAR PLUGS

Includes six ear plugs and storage case.

Style: LEPY
970 multi



SOFT SILICONE EAR PLUGS

Includes four ear plugs and storage case.

Style: LEP
101 clear/clair



MOLDED EAR PLUGS

Unique, soft latex molded design creates water tight seal and allows for hearing during use. Includes two ear plugs and storage case.

Style: LEAR
260 beige
S, M (4-5), M/L, L



STREAMLINE™ TRAINING BOARD

The moment you enter the water with the StreamLine Training Board, you'll notice that this isn't just an ordinary kickboard. On the contrary, the StreamLine reduces and relieves unnecessary stress on your shoulders because it allows you to mimic the body's natural swimming position. Foam molded hand-grippers allow you to drive gracefully in a streamline motion while the tracking channels on both sides keep you in place, along with increased maneuverability for quick turns. So if you begin to drift, don't blame the board. U.S. Patent No. D453,367. U.S. Patent No. 6,840,831 B2. U.S. Patent No. 6,872,111 B2.

Style: LKSTR
001 black/noir **new**
428 royal
720 yellow/jaune



EL

Durable, double sided neoprene webbed construction creates additional resistance in water. Exposed finger and thumb tips allow for better water feel. Velcro® wrist closure. Color coordinated by size.

Style: LFIT
S (yellow)
M (royal)
L (black)



AQUAFOIL

Can be used as a kickboard to strenghten the legs or can be placed between the legs and be used as a pull float to develop arm strength.

Style: LTB
002 black-red



KICKBOARD

Helps improve leg strength through kicking. Durable 20" X 11.5" Closed cell EVA foam.

Style: LKB
001 black **new**
720 yellow



JR. KICKBOARD

Smaller design, perfect for youth and smaller swimmers. Durable 14.5" X 10" Closed cell EVA foam.

Style: LJKB
420 blue
670 pink **new**



PULL FLOAT

Develops arm strength by immobilizing the legs. 6" EVA foam. White and blue laminate.

Style: LPF
462 blue-white
667 pink-white **new**



JR. PULL FLOAT

Smaller in size, perfect for smaller swimmers. 4.75" EVA foam.

Style: LJPF
465 blue-yellow
667 pink-white **new**



Swim Caps

Whether you're seeking protection from damaging chlorine or simply trying to look good against the competition, our swim caps will do you justice. Designed with a precision fit for reduced drag, they're also tear resistant. Our caps are made to slide on easily, and stay on. There are three compositions and two sizes from which to choose.

SILICONE

Two sizes, Classic and Junior. Popular in the racing world, our silicone caps are soft, durable and will retain their colors for race seasons to come.

LATEX

A TYR classic. These original, lightweight caps are proven and have a reputation for a perfect fit.

LYCRA®

Specifically designed with the recreational swimmer in mind, our Lycra caps are extremely comfortable and they will not pull or snag.

CLASSIC SIZE

Universal size. Fits adults and children.

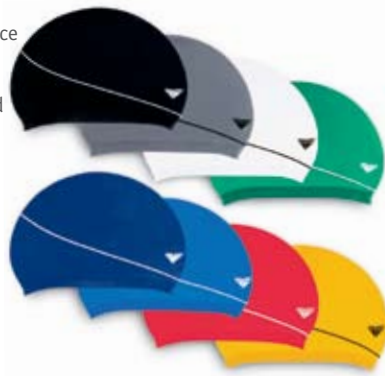
JUNIOR SIZE

Smaller size. Fits children and adults.

AQUA SHIFT™ SWIM CAP

Leading edge racing cap design. Utilizes Tripwire technology to reduce drag. Rounded, wrinkle-free design improves fit and prevents slippage. Silicone material is UV resistant and easy to put on. classic size

Style: ASCP
001 black
049 uranium
100 white
310 green
401 navy
428 royal
610 red
720 yellow



WRINKLE-FREE SILICONE CAP

Raised logo, round wrinkle-free design for better fit and reduced drag. Non-slip interior, tear resistant and easy to put on. classic size

Style: LCS-N
001 black
040 silver
100 white
310 green
401 navy
420 blue
510 purple
610 red
653 violet
720 yellow



SILICONE JUNIOR RACER CAP

Raised logo, round wrinkle-free design for better fit and reduced drag. Non-slip interior, tear resistant and easy to put on. junior size

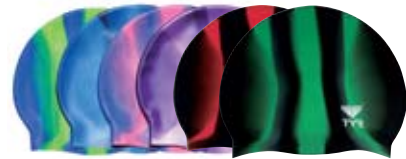
Style: LCSJR
001 black
100 white
401 navy
428 royal
510 purple
310 green
670 pink
731 lt. yellow



MULTI SILICONE CAP

Round Wrinkle-free design for better fit and reduced drag. Non-slip interior, tear resistant and easy to put on. Exciting color combinations. classic size

Style: LCSM
002 black / red
014 black / green
310 green / blue multi
420 blue multi
547 purple / pink multi



LATEX SWIM CAP

Standard 30 gram weight, durable ribbed edge for a secure fit. classic size

Style: LCL
001 black
040 silver
100 white
310 green
322 flor. green
401 navy
428 royal
510 purple
610 red
670 pink
720 yellow
810 orange



LYCRA® SWIM CAP

Extremely comfortable. classic size

Style: LCY-A
Style Junior: LCY-Y
001 black
100 white
401 navy
428 royal
610 red
670 pink
510 purple (not shown)
310 green (not shown)
810 orange (not shown)
720 yellow (not shown)
970 assorted



BEIJING BOUND™ PANDA SILICONE CAP NEW

Classic size
 Style: LCSPNDA
 450 Light Blue New
 670 Pink



HIBISCUS FLOWER SI

Classic size
 Style: LCSFLWR
 100 White
 450 Light Blue
 670 Pink



PIRATES SILICONE CAP NEW

Classic size
 Style: LCSARGH
 001 Black
 100 White
 670 Pink New



FISH FINS JUNIOR SILICONE CAP NEW

Junior Size
 Style: LCSJFINS
 420 Blue
 650 Pink
 810 Orange



BEIJING BOUND DRAGON SILICONE CAP NEW

Classic size
 Style: LCSBJDR2
 001 Black
 610 Red



SMILEY FACE

Classic size
 Style: LCSMILE
 100 white



CANADA MULTI SILICONE

Classic size
 Style: LCSTCAN
 610 red



FREAK N' FAST

classic size
 Style: LCSFREAK
 100 white



SLIPPERY WHEN WET

junior size
 Style: LCSDOLF
 100 white



GIRL POWER

classic size
 Style: LCSGIRL
 100 white



DON'T WORRY SWIM HAPPY

junior size
 Style: LCSDUCK
 100 white



CHILL OUT PENGUIN JUNIOR SILICONE CAP NEW

Junior Size
 Style: LCSJCHIL
 100 White



WE SHELL OVERCOME

junior size
 Style: LCSTURT
 100 white



TYR *fit*™

AQUATIC HAND BUOYS

Style: LBUOY

Color: 450

Ergonomically designed out of EVA foam. Easy-to-hold textured grip for hand placement, secure wrist-lock support on the inside of wrist, hand-lock area above and below grip allows for hand to stay in place without having to grip the buoy. Unique, patent pending design allows for a wide range of exercises and hand placements both above and below the water increasing flexibility, range, and varying your water workouts.

- User defined design
- Soft EVA foam
- Comfort grip design allows wide range of exercises
- Wrist-lock feature helps relieve grip pressure on hand joints
- Flotation resistance for building strength
- Patent Pending



AQUATIC FLOTATION BELT

Style: LBELT

Color: 450

Ergonomically designed out of EVA foam. Contours easily to fit any shape. Belt features easy-to-secure closure. Smooth surface on inside of belt is soft against the skin and texture on the outside keeps the belt in place for less slippage during your workout.

- Soft EVA foam gently conforms to body
- Ergonomically designed to fit comfortably around natural waist without riding up
- Cam lock buckle for easy adjustment every time



Your Aquatic Weight Room

Introducing TYRfit™, featuring inventive new products that provide for an impact-free water workout with serious health benefits. Aquatic fitness is an excellent way to enhance full-body conditioning, improve cardiovascular activity, and develop muscle tone. Unlike a land-based exercise program, water naturally works opposing muscle groups and is ideal for strengthening your all-important body core – which is continuously being stimulated as you work against the water's resistance.

AQUATIC FITNESS GLOVE

Style: LFITF

Color: 450

Durable, double-sided neoprene webbed construction creates additional resistance in water. Exposed finger and thumb tips allow for better water feel and more comfortable fit. Velcro wrist closure. Available in three sizes, S, M, and L.

- Durable neoprene glove for adding resistance during workouts
- Webbing between fingers increases surface hand area
- Non-slip, rubber palms



STATIONARY SWIM BELT

Style: LSWIM

Color: 999

- Designed for backyard pools, hotel pools, public or private pools
- Cam Lock buckle for easy and secure adjustment, won't slip
- Neoprene sleeve reduces chafing around waist
- Fabric-covered elastic cord for safety and durability
- Elastic cord can be detached at belt



STREAMLINE FITNESS BOARD

Style: LKSTRF

Color: 450

Ergonomically designed to place body in natural swimming position. Reduces shoulder stress. Foam-molded hand grips and tracking channels allow you to comfortably hold board while staying in place. U.S. Patent No. D453,367, U.S. Patent No. 6,840,831 B2, U.S. Patent No. 6,872,111 B2.



TYRFIT SPORT TOWEL

Style: LTWLF

Color: 450

Synthetic, 26" x 17" towel allows repeated use without losing softness or reducing absorption. Storage case.



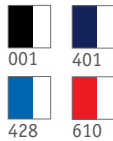


ALLIANCE TEAM™ DUFFLE

12" x 24" x 12"

- Dual zip top panel opens to large main compartment.
- Padded, adjustable comfort strap with swivel clips.
- Side and end zippered pockets.
- Reinforced zipper pulls.
- Reinforced bottom.

Style: LATD
001 black / noir
401 navy / marine
428 royal
610 red / rouge

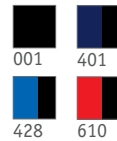


TEAM BACK PACK

18.5" x 13.25" x 9.75"

- Padded, adjustable shoulder straps with two front buckle closures for extra support.
- Large, front-load main compartment with inner sleeve.
- Front mesh pocket.
- Two front adjustable equipment hooks.
- Reinforced zipper pulls.
- Heavy-duty, reinforced bottom.

Style: LBTEAM
001 black / noir
401 navy / marine
428 royal
610 red / rouge



TEAM BAG

12" x 24" x 12"

- Dual zip top panel opens to large main compartment.
- Adjustable strap with swivel clips.
- Side and end zippered pockets.
- Reinforced zipper pulls.
- Reinforced bottom.

Style: LBTE
001 black
401 navy
428 royal
610 red

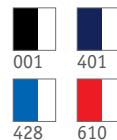


ALLIANCE TEAM™ BACKPACK

18.5" x 13.25" x 9.75"

- Padded, adjustable shoulder straps with two front buckle closures for extra support.
- Two Padded, back-support panels.
- Large, front-load main compartment with inner sleeve.
- Small front pocket with inner pockets good for small items.
- Two front adjustable equipment hooks.
- Two mesh side pockets.
- Reinforced zipper pulls.
- Mesh bottom compartment ideal for wet towel or suit.
- Heavy-duty, reinforced bottom.

Style: LATBP
001 black
401 navy
428 royal
610 red



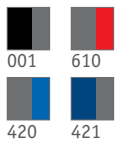


TRANSITION BAG

The Transition backpack is fabricated from durable, 600 Denier Polyester/PVC.

- Padded Adjustable Back Straps.
- Two Large Internal Mesh Shoe Pockets – Running and Cycling.
- Removable Waterproof Bag for Wet Items (with clip for wetsuit).
- Dual Zip Fully Openable Main Compartment.
- Large Outside Mesh Pocket.
- External Helmet Pocket with Safety Clip and Bungee Straps.
- Two External Mesh Water Bottle Pockets.

LTRA
 001 black / grey
 610 grey / red
 420 grey / royal
 421 steel blue / grey

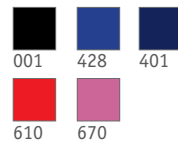


DOGGY BAG

Lightweight mesh carry-all bag with front identification patch, and lace lock. Great for holding training equipment during workout.

15" x 25"

Style: LBD
 001 black
 428 royal
 401 navy
 610 red
 670 pink **new**



MEET MAT

This versatile carry bag converts into a padded foam mat that's perfect for swim meets. Comes with a removable mesh zip bag, an outside zip pocket and I.D. tag. Foam sections are encased in durable 420 denier nylon. Inside stuff-it pouch converts to pillow.
 58" L X 22" W

Style: LBMAT
 006 black-royal / noir-royal



COACH'S COMPUTER BAG

Constructed from an extra durable 420 Denier Metallic Silver Dobby PVC. Two main compartments. Features removable, padded protective case for laptop computer and slim, exterior side pockets for cell phone storage. Two large, exterior zippered pockets. Two interior mesh pockets, 6 pen holders, two pockets for PDA or calculator, and four business card sleeves. Non-slip padded comfort strap with swivel clips. Inverse zippered pocket easily slips on to rolling luggage for convenient travel.
 17"W X 13"H X 5"D

Style: LBCC
 049 uranium



Towels, shoes & promotionnal items

DRY-OFF SPORT TOWEL

Synthetic, 17" x 13" towel allows repeated use without losing softness or reducing absorption. Storage case.

Style: LTW
420 blue
441 aqua
531 lavender



LARGE DRY-OFF SPORT TOWEL

Same great qualities as the Dry-Off Sport towel in a larger 26" X 17" size. Storage case.

Style: LTWL
420 blue
531 lavender



TECHNO WATER SOCKS

Male: ltechml
Female: LTECHFEM
Sizes/Grandeurs:
Adult/Adulte: S-XL

Colors/Couleurs:
001 black/noir
006 black-royal/noir-royal



FEMALE DECK SHOES

Style: PS-LAD
Sizes/Grandeurs:
Adult/Adulte: S-XL
Color/Couleur:
001 black / noir

MALE DECK SHOES

Style: PS-MEN
Sizes/Grandeurs:
Adult/Adulte: S-XL
Color/Couleur:
420 blue/bleu



FEMALE THONG SANDALS

Style: THONG
Sizes/Grandeurs:
Adult/Adulte: XS-L

Colors/Couleurs:
420 blue/bleu
652 fushia



SPLITFIN KEYCHAIN

A cool mini Splitfin that will hold and organize all of your keys!

Style: LFINKC
970 assorted/assortis



LANYARD

Be in style on the pool deck with the TYR Lanyard! Keeps your I.D. on display.

Style: LLY
001 black/noir

