



TYR

Always in front.
Toujours devant.

2007 PERFORMANCE GUIDE



2007 PERFORMANCE GUIDE

PERFORMANCE DURAFAST™	P. 8
PERFORMANCE LYCRA®	P. 24
AQUAFITNESS DURAFAST™	P. 32
AQUAFITNESS LYCRA®	P. 44
AQUA SHIFT™	P. 46
FUSION²	P. 48
WATER POLO	P. 49
TRAINING 2.0	P. 50
GUARD	P. 51
ALLIANCE APPAREL	P. 54
SHORTS	P. 56
MULTI-SPORT	P. 57
YOUTH - JEUNES	P. 60
GOGGLES - LUNETTES	P. 65
ACCESSORIES - ACCESSOIRES	P. 72





robert margalis

- 3-Time U.S. National Champion
- 3-Time World Championship Team

kristen caverly

- Olympian
- 3-Time U.S. National Champion

justin mortimer

- 7-Time U.S. National Champion
- 13-Time NCAA All-American

mary descenza

- American Record Holder
- 6-Time NCAA Individual Champion
- 2-Time U.S. National Champion
- 28-Time NCAA All-American



yana klochkova

- 4-Time Olympic Gold Medalist
- 2-Time World Record Holder
- 8-Time World Champion



erik vendt

- 2-Time Olympic Silver Medalist
- First American to Break 15-Minutes in the 1500m Free



martina moravcova

- 4-Time Olympian
- 2-Time Olympic Silver Medalist
- 3-Time FINA World Cup Winner



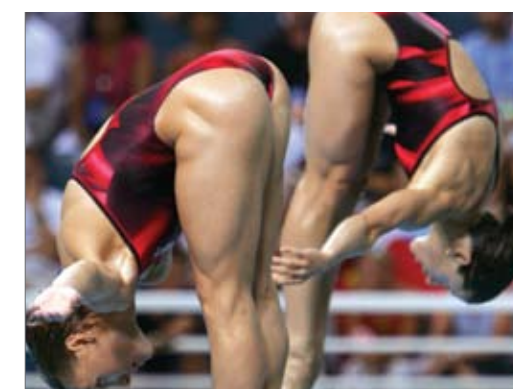
adam lucas

- Olympian
- World Championships Silver and Bronze Medalist
- 2005 Australian Male IM Swimmer of the Year



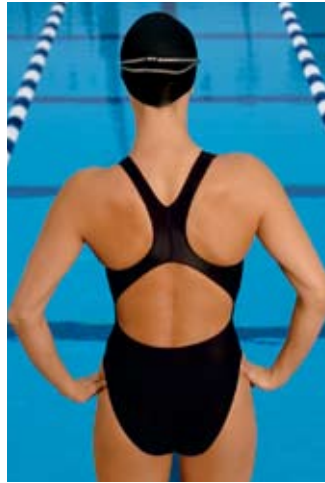
anastasia davydova & anastasia ermakova

- Synchronized Swimming
- 2-Time Olympic Gold Medalists
- 5-Time World Champions

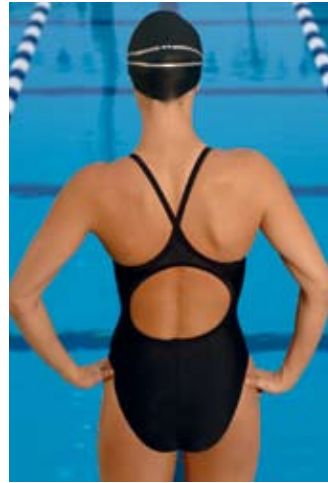


We are also home to a growing list of more than 15 Swimming & Diving Federations worldwide. Joining the TYR Elite is the Russian Diving Federation, a team comprised of World Champions and Olympic Medalists.

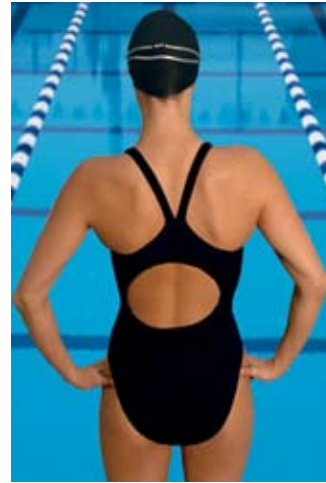
TYR | PERFORMANCE STYLES



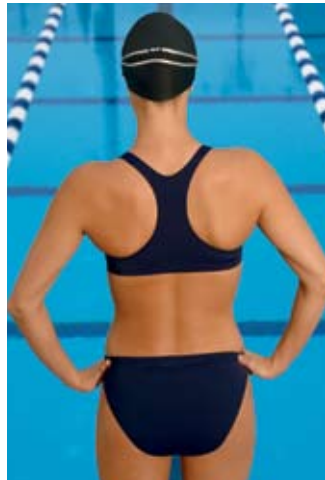
maxback



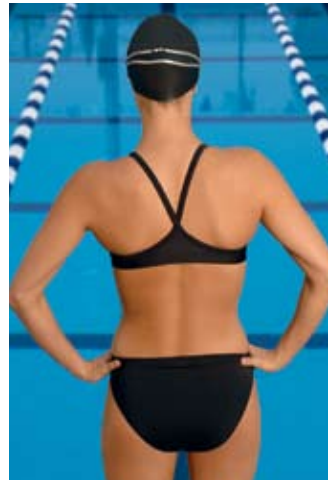
diamondback



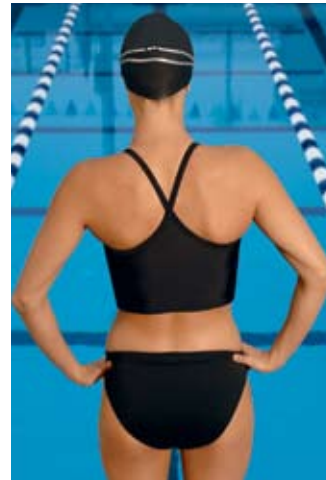
dimaxback



maxback workout bikini



diamondback workout bikini



diamondback tankini



jammer



square leg



racer



DNA



PERFORMANCE



DIMAXBACK
Style: DDNA7



SPLICE MAXBACK
Style: MDNA7

COULEUR / COLOR
420 Blue / Bleu
510 Purple / Mauve
610 Red / Rouge

SIZES / GRANDEURS
Youth / Enfant: 8/22 to / à 14/28
Adult / Adulte: 30 to / à 40

DURAFAST™ 100% POLYESTER:
Designed to perform. Sound familiar?

For starters, our exclusive collection of 100% Polyester training suits last three times longer than traditional Lycra®. You'll also be pleased to discover that our quick drying Durafast has minimal moisture absorption and is soft, comfortable and easy on the skin. It has remarkable shape retention and memory thanks to a unique fabrication blend of polyester and PBT.

In fact, not only is PBT a textured polyester yarn that has natural stretch characteristics, but it also provides exceptional chlorine resistance, refuses to fade and has a UPF 50+ rating for ultimate sun protection. Imagine that? A training suit that works as hard as you do.

DURAFAST™ 100% POLYESTER:
Conçu pour performer. Ça vous dit quelque chose?

Tout d'abord, notre collection de maillots exclusivement 100% polyester dure trois fois plus longtemps que le Lycra® traditionnel. Vous serez aussi heureux d'apprendre que le Durafast sèche rapidement et qu'il est confortable et doux sur la peau. Il garde sa forme admirablement grâce à un unique mélange de fabrication de polyester et de PBT.

En fait, non seulement le PBT est un polyester texturé comportant une élasticité naturelle, mais il est aussi exceptionnellement résistant au chlore, refuse de s'user et démontre un taux USP de +50 pour une meilleure protection contre le soleil. Vous imaginez? Un maillot d'entraînement qui travaille aussi fort que vous.

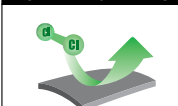


COLOR FASTNESS
COULEUR INDELÉBILE



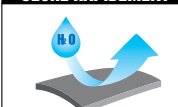
SUN RESISTANT
RÉSISTANT AU SOLEIL

LESS DEGRADATION
MOIN DE DÉGRADATION

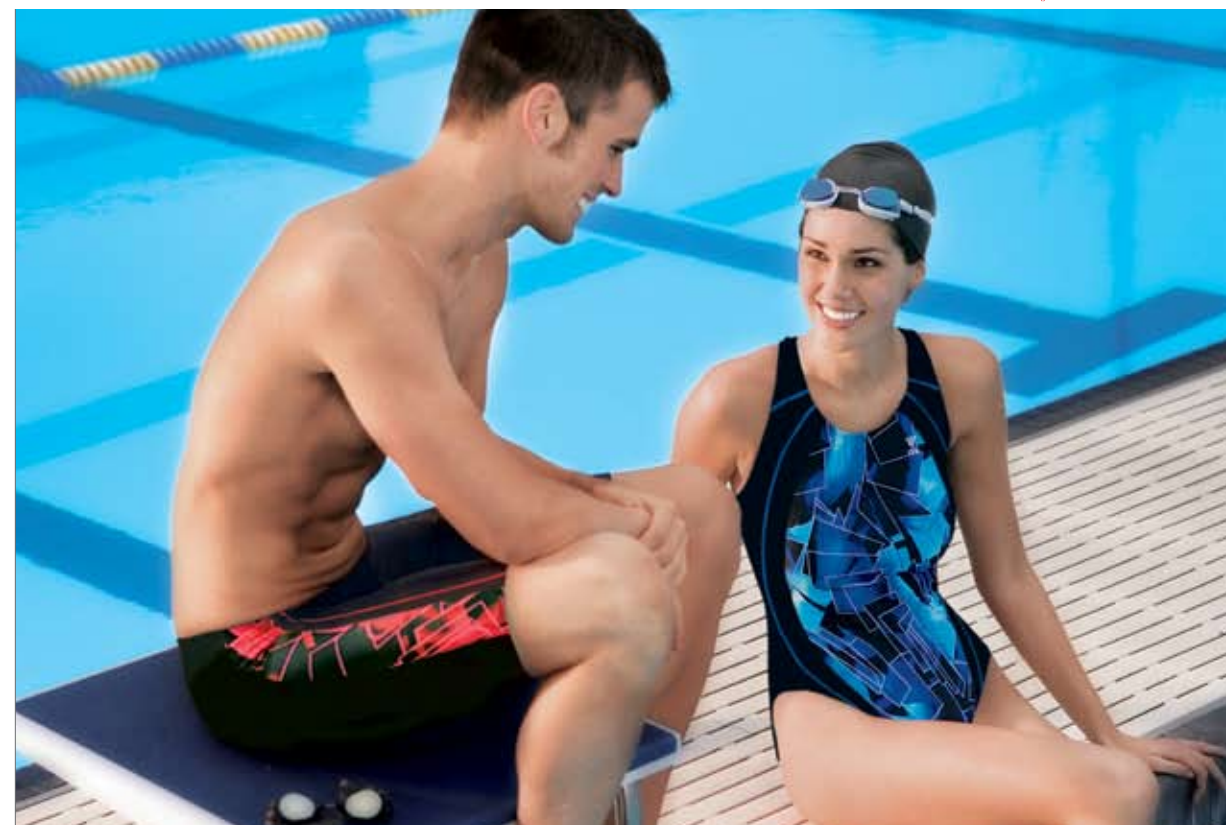


CHLORINE PROTECTION
PROTECTION CHLORINE

QUICK DRYING
SÈCHE RAPIDEMENT



MINIMAL ABSORPTION
ABSORPTION MINIMALE



CURVE SPLICE JAMMER
Style: SDNA7



CURVE SPLICE SQUARE LEG
Style: BDNA7



CURVE SPLICE RACER
Style: RDNA7

COULEUR / COLOR
420 Blue / Bleu
510 Purple / Mauve
610 Red / Rouge
SIZES / GRANDEURS
Youth / Enfant: 8/22 to / à 14/28
Adult / Adulte: 30 to / à 40



VAPOR



DIAMONDHEAD

PERFORMANCE



PERFORMANCE

MAXBACK
Style: MVAP7

DIAMONDBACK
Style: DVAP7

COULEUR / COLOR
420 Blue / Bleu
610 Red / Rouge
710 gold / jaune

SIZES / GRANDEURS
Youth / Enfant: 8/22 to / à 14/28
Adult / Adulte: 30 to / à 40

MAXBACK
Style: MDIA7

DIMAXBACK
Style: DDIA7

COULEUR / COLOR
420 Blue / Bleu
610 Red / Rouge
310 green / vert

SIZES / GRANDEURS
Youth / Enfant: 8/22 to / à 14/28
Adult / Adulte: 30 to / à 40



VAPOR



DIAMONDHEAD

PERFORMANCE



PERFORMANCE

MAXBACK
Style: MVAP7

DIAMONDBACK
Style: DVAP7

COULEUR / COLOR
420 Blue / Bleu
610 Red / Rouge
710 gold / jaune

SIZES / GRANDEURS
Youth / Enfant: 8/22 to / à 14/28
Adult / Adulte: 30 to / à 40

MAXBACK
Style: MDIA7

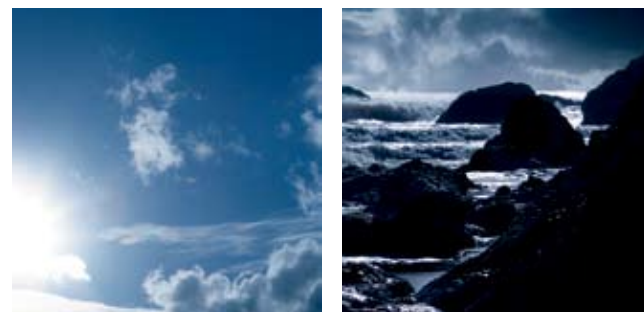
DIMAXBACK
Style: DDIA7

COULEUR / COLOR
420 Blue / Bleu
610 Red / Rouge
310 green / vert

SIZES / GRANDEURS
Youth / Enfant: 8/22 to / à 14/28
Adult / Adulte: 30 to / à 40



EQUINOX | PERFORMANCE



 **DURAFAST™**
100% POLYESTER



SPLICE RACER
Style: REQU7

Suits slightly differ from picture
Les maillots diffèrent légèrement de la photo



SPLICE SQUARE LEG
Style: BEQU7



CURVE SPLICE JAMMER
Style: SEQU7

COULEUR / COLOR
420 Blue / Bleu
510 Purple / Mauve
610 Red / Rouge
310 Green / vert
SIZES / GRANDEURS
Youth / Enfant: 8/22 to / à 14/28
Adult / Adulte: 30 to / à 40



EQUINOX

Suit slightly differs from picture
Le maillot diffère légèrement de la photo



MAXBACK
Style: MEQU7



DIMAXBACK
Style: DEQU7

COULEUR / COLOR
420 Blue / Bleu
510 Purple / Mauve
610 Red / Rouge
310 Green / vert
SIZES / GRANDEURS
Youth / Enfant: 8/22 to / à 14/28
Adult / Adulte: 30 to / à 40



MOSAIC PERFORMANCE

DURAFEST™
100% POLYESTER



CURVE SPLICE JAMMER
Style: SMOS7



SPLICE SQUARE LEG
Style: BMOS7

COULEUR / COLOR
420 Blue / Bleu
310 green / vert
SIZES / GRANDEURS
Youth / Enfant: 8/22 to / à 14/28
Adult / Adulte: 30 to / à 40



MAXBACK
Style: MMOS7

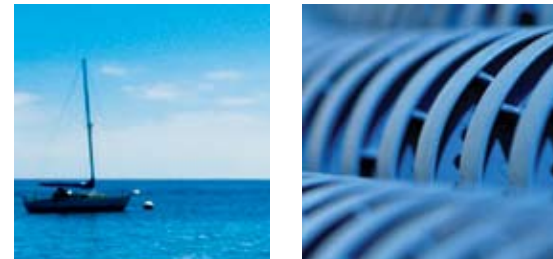


DIAMONDBACK
Style: DMOS7

COULEUR / COLOR
420 Blue / Bleu
310 green / vert
SIZES / GRANDEURS
Youth / Enfant: 8/22 to / à 14/28
Adult / Adulte: 30 to / à 40



SOLID | PERFORMANCE



JAMMER
Style: SDUR7

COULEUR / COLOR
001 black / noir
401 navy / marine
425 royal
610 red / rouge
421 steel blue / bleu acier

SIZES / GRANDEURS
Adult / Adulte: 6 to / à 16

SOLID

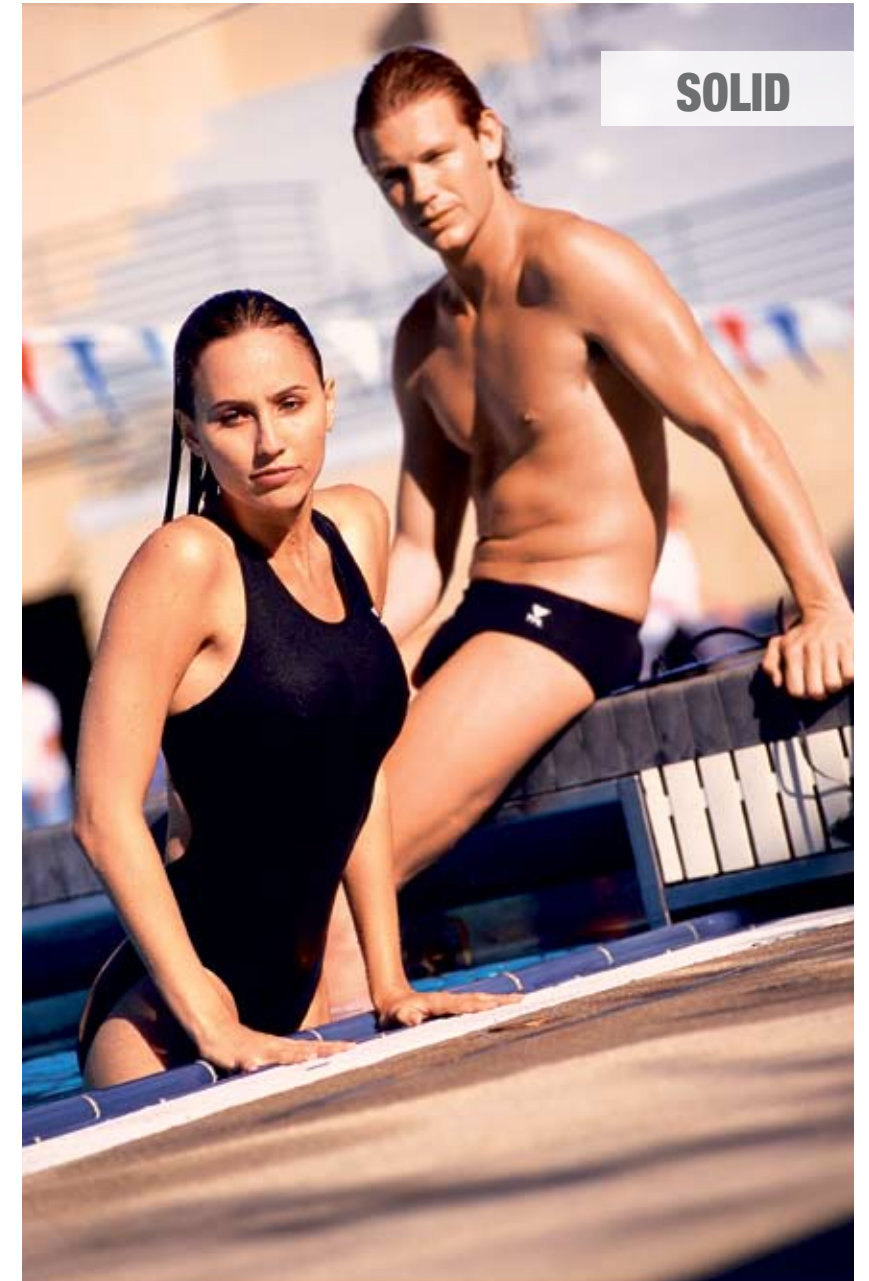


SQUARE LEG
Style: BPS7

RACER
Style: RDUR7

COULEUR / COLOR
421 steel blue / bleu acier
425 royal
401 navy / marine
503 burgundy / bourgogne
610 red / rouge
220 bordeaux
210 brown / brun
326 khaki
001 black / noir

SIZES / GRANDEURS
Youth / Enfant: 8/22 to / à 14/28
Adult / Adulte: 30 to / à 40



WOB MAXBACK
Style: BDUR7

COULEUR / COLOR
421 steel blue / bleu acier
440 turquoise
425 royal

401 navy / marine
220 bordeaux
610 red / rouge

326 khaki
210 brown / brun
001 black / noir

SIZES / GRANDEURS
Youth / Enfant: 8/22 to / à 14/28
Adult / Adulte: 30 to / à 40



MAXBACK
Style: MDUR7

COULEUR / COLOR
048 charcoal / charbon
350 kelly / vert
421 steel blue / bleu acier
440 turquoise

425 royal
401 navy / marine
503 burgundy / bourgogne
610 red / rouge

220 bordeaux
210 brown / brun
326 khaki
001 black / noir

SIZES / GRANDEURS
Youth / Enfant: 8/22 to / à 14/28
Adult / Adulte: 30 to / à 40

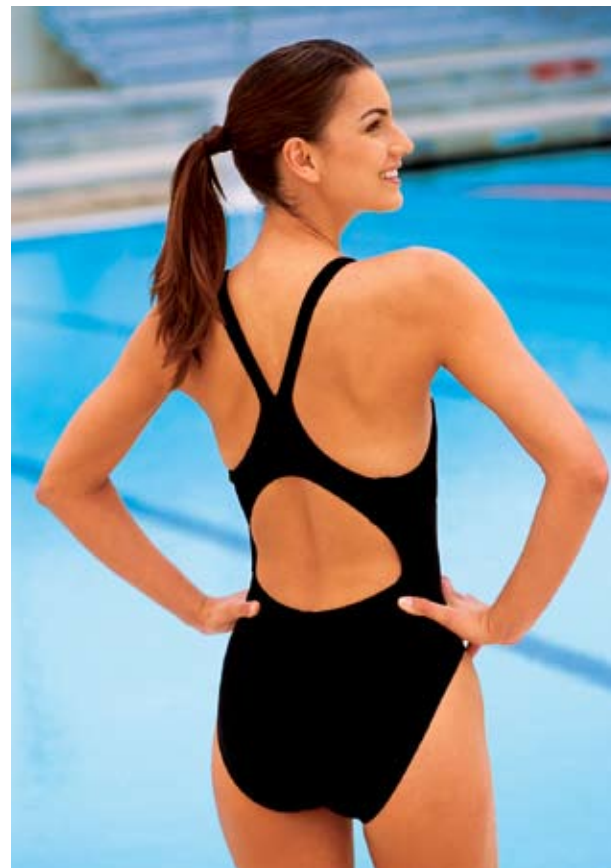
PERFORMANCE



DIMAXBACK
Style: DDSO7

COULEUR / COLOR
421 steel blue / bleu acier
425 royal
401 navy / marine
610 red / rouge
220 bordeaux
326 khaki
001 black / noir

SIZES / GRANDEURS
Youth / Enfant: 8/22 to / à 14/28
Adult / Adulte: 30 to / à 40



DIAMONDBACK
Style: DPLY7

COULEUR / COLOR
421 steel blue / bleu acier
401 navy / marine
610 red / rouge
001 black / noir

SIZES / GRANDEURS
Youth / Enfant: 8/22 to / à 14/28
Adult / Adulte: 30 to / à 40

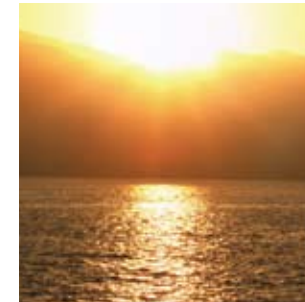
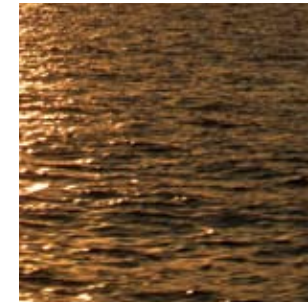


ZIPPERBACK HIGHNECK
Style: HDUR7

COULEUR / COLOR
401 navy / marine
001 black / noir

SIZES / GRANDEURS
Adult / Adulte: 30 to / à 42
Long: 30L to / à 42L

SOLID PERFORMANCE



INSTRUCTOR SUIT
Style: TIWF7

COULEUR / COLOR
401 navy / marine
001 black / noir
421 steel blue / bleu acier

SIZES / GRANDEURS
Adult / Adulte: 30 to / à 40
Long: 30L to / à 40L



SQUARE LEG
Style: BUND7

COULEUR / COLOR
401 navy / marine
001 black / noir

SIZES / GRANDEURS
Adult / Adulte: 30 to / à 42
Long: 30L to / à 42L



UNLINED MAXBACK
Style: MPO7

COULEUR / COLOR
425 royal
401 navy / marine
610 red / rouge
001 black / noir

SIZES / GRANDEURS
Youth / Enfant: 8/22 to / à 14/28
Adult / Adulte: 30 to / à 40



TRI COLOR



TRI COLOR RACER

Style: RTIP7



TRI COLOR SQUARE LEG

Style: BTIP7



TRI COLOR JAMMER

Style: STIP7

COULEUR / COLOR
021 black-bordeau / noir-bordeau
464 navy-royal / marine-royal
429 steel blue-navy / bleu acier-marine

SIZES / GRANDEURS
Youth / Enfant: 8/22 to / à 14/28
Adult / Adulte: 30 to / à 40



TRI COLOR MAXBACK

Style: MSTR7

COULEUR / COLOR
021 black-bordeau / noir-bordeau
466 navy-apple / marine-pomme
464 navy-royal / marine-royal
429 steel blue-orange / bleu acier-orange

SIZES / GRANDEURS
Youth / Enfant: 8/22 to / à 14/28
Adult / Adulte: 30 to / à 40



PERFORMANCE

BOOMERANG



SPLICE MAXBACK

Style: MSB07

COULEUR / COLOR
422 steel blue-turquoise / bleu acier-turquoise
439 turquoise-navy / turquoise-marine
413 navy-orange / marine-orange
228 brown-khaki / brun-khaki
002 black-red / noir-rouge

SIZES / GRANDEURS
Youth / Enfant: 8/22 to / à 14/28
Adult / Adulte: 30 to / à 40



SPLICE MAXBACK WOB

Style: BSB07

COULEUR / COLOR
422 steel blue-turquoise / bleu acier-turquoise
439 turquoise-navy / turquoise-marine
413 navy-orange / marine-orange
228 brown-khaki / brun-khaki
002 black-red / noir-rouge

SIZES / GRANDEURS
Youth / Enfant: 8/22 to / à 14/28
Adult / Adulte: 30 to / à 40

ALSO / AUSSI

CURVE SPLICE JAMMER

Style: SSB07

COULEUR / COLOR
422 steel blue-turquoise / bleu acier-turquoise
413 navy-orange / marine-orange
464 navy-royal / marine-royal
002 black-red / noir-rouge

SIZES / GRANDEURS
Youth / Enfant: 8/22 to / à 14/28
Adult / Adulte: 30 to / à 40

(picture not available / photo non disponible)

TRI COLOR



TRI COLOR RACER

Style: RTIP7



TRI COLOR SQUARE LEG

Style: BTIP7



TRI COLOR JAMMER

Style: STIP7

COULEUR / COLOR
021 black-bordeau / noir-bordeau
464 navy-royal / marine-royal
429 steel blue-navy / bleu acier-marine

SIZES / GRANDEURS
Youth / Enfant: 8/22 to / à 14/28
Adult / Adulte: 30 to / à 40



TRI COLOR MAXBACK

Style: MSTR7

COULEUR / COLOR
021 black-bordeau / noir-bordeau
466 navy-apple / marine-pomme
464 navy-royal / marine-royal
429 steel blue-orange / bleu acier-orange

SIZES / GRANDEURS
Youth / Enfant: 8/22 to / à 14/28
Adult / Adulte: 30 to / à 40



BOOMERANG



PERFORMANCE



SPLICE MAXBACK

Style: MSB07

COULEUR / COLOR
422 steel blue-turquoise / bleu acier-turquoise
439 turquoise-navy / turquoise-marine
413 navy-orange / marine-orange
228 brown-khaki / brun-khaki
002 black-red / noir-rouge

SIZES / GRANDEURS
Youth / Enfant: 8/22 to / à 14/28
Adult / Adulte: 30 to / à 40



SPLICE MAXBACK WOB

Style: BSB07

COULEUR / COLOR
422 steel blue-turquoise / bleu acier-turquoise
439 turquoise-navy / turquoise-marine
413 navy-orange / marine-orange
228 brown-khaki / brun-khaki
002 black-red / noir-rouge

SIZES / GRANDEURS
Youth / Enfant: 8/22 to / à 14/28
Adult / Adulte: 30 to / à 40

ALSO / AUSSI

CURVE SPLICE JAMMER

Style: SSB07

COULEUR / COLOR
422 steel blue-turquoise / bleu acier-turquoise
413 navy-orange / marine-orange
464 navy-royal / marine-royal
002 black-red / noir-rouge

SIZES / GRANDEURS
Youth / Enfant: 8/22 to / à 14/28
Adult / Adulte: 30 to / à 40

(picture not available / photo non disponible)



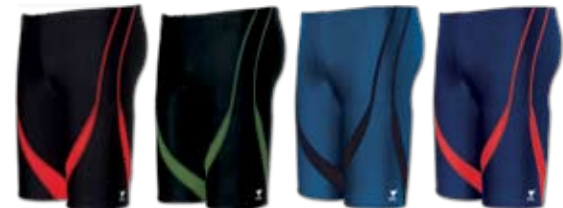
ALLIANCE PERFORMANCE



SPLICE RACER
Style: RDAL7



SPLICE SQUARE LEG
Style: BDAL7



SPLICE JAMMER
Style: SDAL7

COULEUR / COLOR
423 steel blue-navy / bleu acier-marine
404 navy-red / marine-rouge
002 black-red / noir-rouge
062 black-khaki / noir-khaki

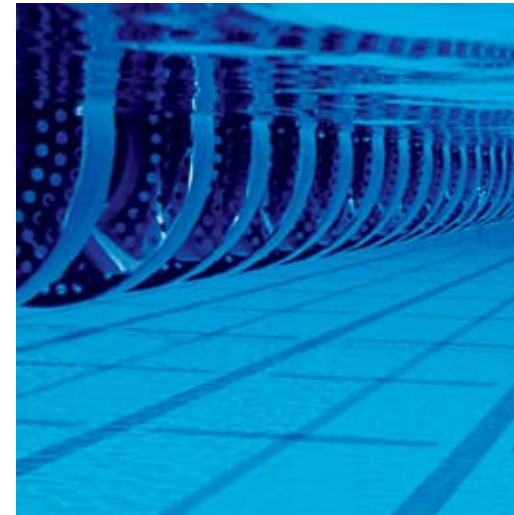
SIZES / GRANDEURS
Youth / Enfant: 8/22 to / à 14/28
Adult / Adulte: 30 to / à 40



SPLICE MAXBACK
Style: MDAL7

COULEUR / COLOR
467 steel blue-apple / bleu acier-pomme
446 navy-turquoise / marine-turquoise
404 navy-red / marine-rouge
642 red-navy / rouge-marine
002 black-red / noir-rouge
062 black-khaki / noir-khaki

SIZES / GRANDEURS
Youth / Enfant: 8/22 to / à 14/28
Adult / Adulte: 30 to / à 40



SOLID



SQUARE LEG ZIP POCKET
Style: BZPD7

COULEUR / COLOR
001 black-black / noir-noir
401 navy-navy / marine-marine
021 black-bordeau / noir-bordeau
062 black-khaki / noir-khaki
036 black-brown / noir-brun
464 navy-royal / marine-royal
434 steel blue-black / bleu acier-noir
228 brown-khaki / brun-khaki

SIZES / GRANDEURS
Youth / Enfant: 8/22 to / à 14/28
Adult / Adulte: 30 to / à 40

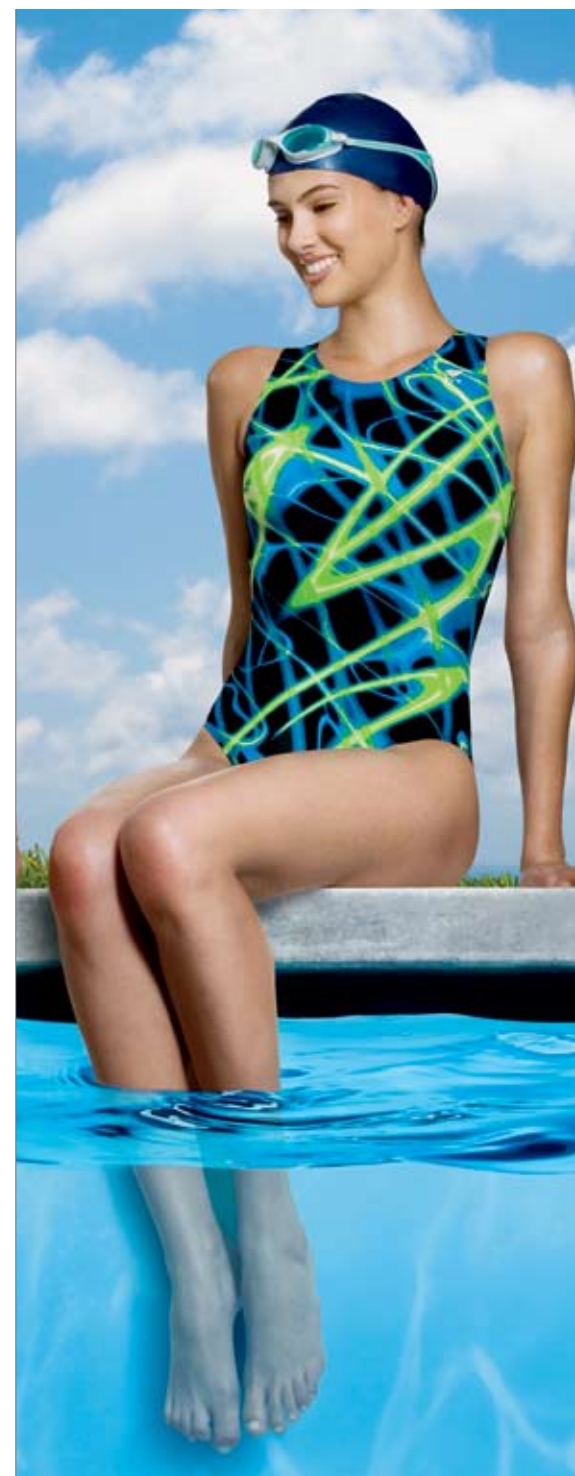


MASTER SUIT
Style: SOMD7

COULEUR / COLOR
001 black / noir
401 navy / marine

SIZES / GRANDEURS
Youth / Enfant: 8/22 to / à 14/28
Adult / Adulte: 30 to / à 40

ZENITH LYCRA®



NEON PERFORMANCE LYCRA®



MAXBACK
Style: MNEO1



CURVE SPLICE JAMMER
Style: SNEO1



SPLICE RACER
Style: RNEO1

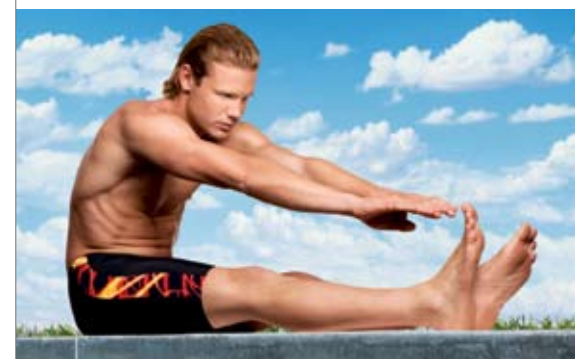
COULEUR / COLOR
420 blue / bleu
610 red / rouge
SIZES / GRANDEURS
Youth / Enfant: 8/22 to / à 14/28
Adult / Adulte: 30 to / à 40

PERFORMANCE LYCRA®



MAXBACK
Style: MZEN1

COULEUR / COLOR
510 purple / mauve
420 blue / bleu
610 red / rouge
SIZES / GRANDEURS
Youth / Enfant: 8/22 to / à 14/28
Adult / Adulte: 30 to / à 40



STARSEARCH LYCRA®



Suit slightly differs from picture
Le maillot diffère légèrement de la photo

PERFORMANCE LYCRA®



SPLICE MAXBACK
Style: MSTA1



DIMAXBACK
Style: DSTA1

COULEUR / COLOR
420 blue / bleu
610 red / rouge
SIZES / GRANDEURS
Youth / Enfant: 8/22 to / à 14/28
Adult / Adulte: 30 to / à 40



STARSEARCH PERFORMANCE LYCRA®



SPLICE RACER
Style: RSTA1



SPLICE SQUARE LEG
Style: BSTA1



CURVE SPLICE JAMMER
Style: SSTA1

COULEUR / COLOR
420 blue / bleu
610 red / rouge
SIZES / GRANDEURS
Youth / Enfant: 8/22 to / à 14/28
Adult / Adulte: 30 to / à 40



Suits slightly differ from pictures
Les maillots diffèrent légèrement des photos

LYCRA®



LYCRA® PERFORMANCE

DIAMONDBACK

Style: DSOL1

COULEUR / COLOR

001 black / noir
402 navy / marine
425 royal
610 red / rouge

SIZES / GRANDEURS

Youth / Enfant: 8/22 to / à 14/28
Adult / Adulte: 30 to / à 40

JAMMER

Style: RJAM1

COULEUR / COLOR

001 black / noir
402 navy / marine
425 royal
610 red / rouge

SIZES / GRANDEURS

Youth / Enfant: 8/22 to / à 14/28
Adult / Adulte: 30 to / à 40



MAXBACK

Style: MSO1

RACER

Style: RSO1

PERFORMANCE

WOB

Style: BDSO1

TANKINI

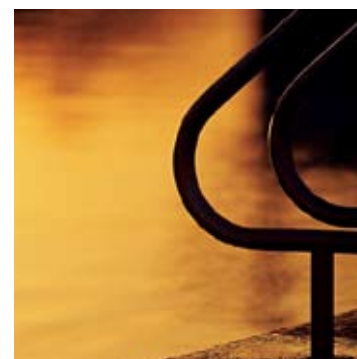
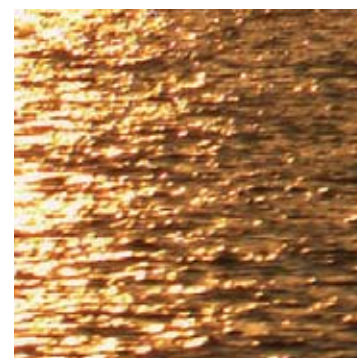
Style: TDSO1

COULEUR / COLOR

001 black / noir
402 navy / marine
425 royal
610 red / rouge

SIZES / GRANDEURS

Youth / Enfant: 8/22 to / à 14/28
Adult / Adulte: 30 to / à 40



SQUARE LEG ZIP POCKET

Style: BZP1

MASTER SUIT

Style: SOM1

COULEUR / COLOR

001 black / noir
402 navy / marine
425 royal

SIZES / GRANDEURS

Youth / Enfant: 8/22 to / à 14/28
Adult / Adulte: 30 to / à 40
(see pictures p. 23 / voir photos p. 23)

SQUARE LEG

Style: SQL1

COULEUR / COLOR

001 black / noir
402 navy / marine
425 royal

SIZES / GRANDEURS

Youth / Enfant: 8/22 to / à 14/28
Adult / Adulte: 30 to / à 40



ALLIANCE



PERFORMANCE



SPLICE MAXBACK
Style: MALI1

COULEUR / COLOR
006 black-royal / noir-royal
002 black-red / noir-rouge
414 navy-royal-turq. / marine-royal-turq.
409 navy-gold / marine-jaune

SIZES / GRANDEURS
Youth / Enfant: 8/22 to / à 14/28
Adult / Adulte: 30 to / à 40

ALLIANCE PERFORMANCE



SPLICE RACER
Style: RAL11



SPLICE SQUARE LEG
Style: BAL11



SPLICE JAMMER
Style: SAL11

COULEUR / COLOR
006 black-royal / noir-royal
002 black-red / noir-rouge
409 navy-gold / marine-jaune

SIZES / GRANDEURS
Youth / Enfant: 8/22 to / à 14/28
Adult / Adulte: 30 to / à 40



ALLIANCE



PERFORMANCE



SPLICE MAXBACK
Style: MALI1

COULEUR / COLOR
006 black-royal / noir-royal
002 black-red / noir-rouge
414 navy-royal-turq. / marine-royal-turq.
409 navy-gold / marine-jaune

SIZES / GRANDEURS
Youth / Enfant: 8/22 to / à 14/28
Adult / Adulte: 30 to / à 40

ALLIANCE PERFORMANCE



SPLICE RACER
Style: RALI1



SPLICE SQUARE LEG
Style: BALI1



SPLICE JAMMER
Style: SALI1

COULEUR / COLOR
006 black-royal / noir-royal
002 black-red / noir-rouge
409 navy-gold / marine-jaune

SIZES / GRANDEURS
Youth / Enfant: 8/22 to / à 14/28
Adult / Adulte: 30 to / à 40





AQUAFITNESS

Suit slightly differs from picture
Le maillot diffère légèrement de la photo



princess seams AQUA TANK coutures princesse

Style: ATP7

COULEUR / COLOR
001 black / noir
401 navy / marine
425 royal
220 bordeau

503 burgundy / bourgogne
421 steel blue / bleu acier
210 brown / brun
440 turquoise

SIZES / GRANDEURS
Adult / Adulte: 8 to / à 20
Long: 8L to / à 20L
Over size / Taille forte: 22 to / à 26

panel AQUA TANK à panneaux

Style: ATPP7

COULEUR / COLOR
021 black-bordeau / noir-bordeau
036 black-brown / noir-brun
411 navy-steel blue / marine-bleu acier
455 navy-burgundy / marine-bourgogne
062 black-khaki / noir-khaki

SIZES / GRANDEURS
Adult / Adulte: 8 to / à 20
Long: 8L to / à 20L
Over size / Taille forte: 22 to / à 26



SOLID AQUAFITNESS



panel & piping AQUA TANK à panneaux et piping

Style: ATPC7

COULEUR / COLOR
605 burgundy-navy-white / bourgogne-marine-blanc
411 navy-st. blue-burgundy / marine-bleu ac.-bourgogne
036 black-brown-white / noir-brun-blanc (not shown)

SIZES / GRANDEURS
Adult / Adulte: 8 to / à 20
Long: 8L to / à 20L
Over size / Taille forte: 22 to / à 26



TANKINI

Style: TKPS7

COULEUR / COLOR
001 black / noir
401 navy / marine
220 bordeau

SIZES / GRANDEURS
Adult / Adulte: 8 to / à 20
Over size / Taille forte: 22 to / à 26



SARONG AQUA TANK

Style: ATPS7

COULEUR / COLOR
001 black / noir
401 navy / marine

SIZES / GRANDEURS
Adult / Adulte: 8 to / à 20
Over size / Taille forte: 22 to / à 26



PAREO

Style: PAREO7

COULEUR / COLOR
001 black / noir
401 navy / marine
425 royal
220 bordeau
503 burgundy / bourgogne
421 steel blue / bleu acier
210 brown / brun
440 turquoise
326 khaki

SIZES / GRANDEURS
S to / à XL



CROSSOVER

Style: TXSP7

COULEUR / COLOR
060 black-white / noir-blanc
408 navy-white / marine-blanc
221 bordeaux-white / bordeaux-blanc
421 steel blue-white / bleu acier-blanc
210 brown-white / brun-blanc (not shown)

SIZES / GRANDEURS
Adult / Adulte: 8 to / à 20
Over size / Taille forte: 22 to / à 26



SQUARE NECK TANK

Style: TSQU7

COULEUR / COLOR
021 black-bordeaux / noir-bordeaux
408 navy-white / marine-blanc
221 bordeaux-white / bordeaux-blanc
436 steel blue-sky blue / bleu acier-bleu ciel
210 brown-white / brun-blanc (not shown)

SIZES / GRANDEURS
Adult / Adulte: 8 to / à 20
Long: 8L to / à 20L
Over size / Taille forte: 22 to / à 26
D-cup: 8 to / à 20



skirted SQ. NECK TANKINI à jupe

Style: TKSQ7

COULEUR / COLOR
060 black-white / noir-blanc
408 navy-white / marine-blanc
221 bordeaux-white / bordeaux-blanc
421 steel blue-white / bleu acier-blanc

SIZES / GRANDEURS
Adult / Adulte: 8 to / à 20
Over size / Taille forte: 22 to / à 26



SARONG TANK

Style: TSSP7

COULEUR / COLOR
001 black / noir
401 navy / marine

SIZES / GRANDEURS
Adult / Adulte: 8 to / à 20
Over size / Taille forte: 22 to / à 26



V-NECK V-BACK TANK

Style: TVVP7

COULEUR / COLOR
060 black-white / noir-blanc
062 black-khaki / noir-khaki (not shown)
408 navy-white / marine-blanc
221 bordeaux-white / bordeaux-blanc
421 steel blue-white / bleu acier-blanc
210 brown-white / brun-blanc

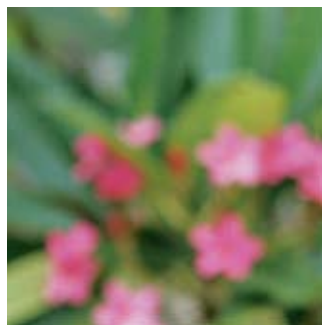
SIZES / GRANDEURS
Adult / Adulte: 8 to / à 20
Long: 8L to / à 20L
Over size / Taille forte: 22 to / à 26

ALSO / AUSSI **V-NECK V-BACK TANKINI**

Style: TKVP7

COULEUR / COLOR
060 black-white / noir-blanc
408 navy-white / marine-blanc
421 steel blue-white / bleu acier-blanc

SIZES / GRANDEURS
Adult / Adulte: 8 to / à 20
Over size / Taille forte: 22 to / à 26





LAP TANK

Style: XLAP7

COULEUR / COLOR

- 001 black / noir
- 401 navy / marine
- 421 steel blue / bleu acier
- 220 bordeau

SIZES / GRANDEURS

Adult / Adulte: 8 to / à 20
Over size / Taille forte: 22 to / à 26



HORIZONTAL SPLICE AQUA TANK

Style: ATHS7

COULEUR / COLOR

- 021 black-bordeau / noir-bordeau
- 062 black-khaki / noir-khaki
- 036 black-brown / noir-brun
- 411 navy-steel blue / marine-bleu acier
- 474 royal-turquoise

SIZES / GRANDEURS

Adult / Adulte: 8 to / à 20
Long: 8L to / à 20L
Over size / Taille forte: 22 to / à 26



ALLIANCE SPLICE AQUA TANK

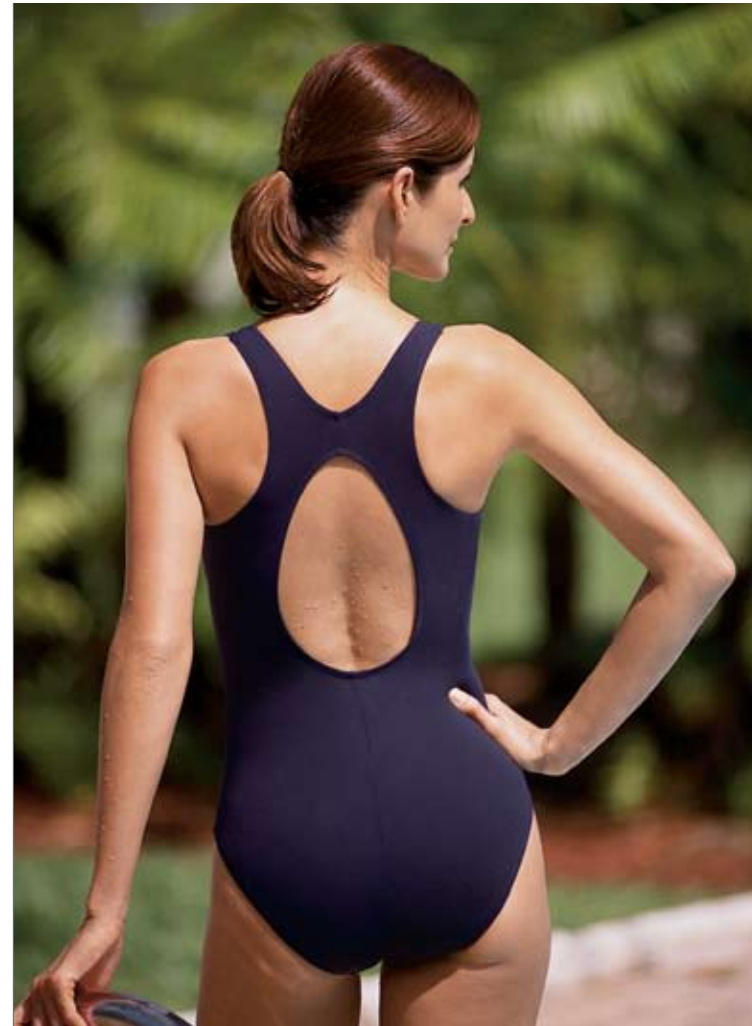
Style: ATMA7

COULEUR / COLOR

- 021 black-bordeau / noir-bordeau
- 408 navy-white / marine-blanc
- 474 royal-turquoise
- 222 bordeau-black / bordeau-noir

SIZES / GRANDEURS

Adult / Adulte: 8 to / à 20
Over size / Taille forte: 22 to / à 26



FITNESS TANK

Style: TFDF7

COULEUR / COLOR

- 001 black / noir
- 401 navy / marine
- 425 royal

SIZES / GRANDEURS

Adult / Adulte: 8 to / à 20
Over size / Taille forte: 22 to / à 26

HIGHNECK TANK

Style: THPP7

COULEUR / COLOR

- 060 black-white / noir-blanc
- 021 black-bordeau / noir-bordeau
- 408 navy-white / marine-blanc
- 422 steel blue-turquoise / bleu acier-turquoise

SIZES / GRANDEURS

Adult / Adulte: 8 to / à 20
Long: 8L to / à 20L
Over size / Taille forte: 22 to / à 26



HIGHNECK TANK

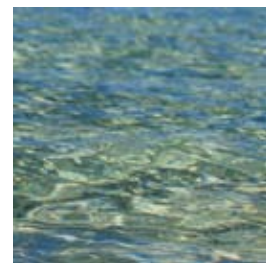
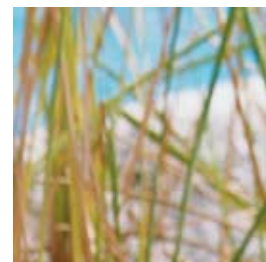
Style: THFS7

COULEUR / COLOR

- 455 navy-burg.-white / marine-bourg.-blanc
- 436 steel bl.-sky bl.-white / bl. acier-bl. ciel-blanc
- 036 black-brown-white / noir-brun-blanc

SIZES / GRANDEURS

Adult / Adulte: 8 to / à 20
Over size / Taille forte: 22 to / à 26



EQUINOX



AQUAFITNESS



AQUA TANK II
Style: TAEQ7

COULEUR / COLOR
420 blue / bleu
610 red / rouge
310 green / vert
510 purple / mauve

SIZES / GRANDEURS
Adult / Adulte: 8 to / à 20
Long: 8L to / à 20L
Over size / Taille forte: 22 to / à 26



V-NECK V-BACK TANK
Style: TVEQ7



V-NECK V-BACK TANKINI
Style: TKEQ7



SQUARE NECK TANK
Style: TSEQ7

COULEUR / COLOR
420 blue / bleu
610 red / rouge
310 green / vert
510 purple / mauve

SIZES / GRANDEURS
Adult / Adulte: 8 to / à 20
Over size / Taille forte: 22 to / à 26



DNA | AQUA FITNESS



AQUA TANK II
Style: TADN7

COULEUR / COLOR
420 blue / bleu
510 purple / mauve
610 red / rouge

SIZES / GRANDEURS
Adult / Adulte: 8 to / à 20
Long: 8L to / à 20L
Over size / Taille forte: 22 to / à 26



FRONT PRINT AQUA TANK
Style: TDNA7



V-NECK V-BACK TANK
Style: TVDN7



SQUARE NECK TANK
Style: TSDN7

COULEUR / COLOR
420 blue / bleu
510 purple / mauve
610 red / rouge

SIZES / GRANDEURS
Adult / Adulte: 8 to / à 20
Over size / Taille forte: 22 to / à 26



AQUA TANK II
 Style: TADI7
 COULEUR / COLOR
 420 blue / bleu
 610 red / rouge
 310 green / vert
 SIZES / GRANDEURS
 Adult / Adulte: 8 to / à 20
 Long: 8L to / à 20L
 Over size / Taille forte: 22 to / à 26



**mastectomy
 HIGH NECK TANK
 massectomie**
 Style: MHD17
 COULEUR / COLOR
 420 blue / bleu
 610 red / rouge
 310 green / vert
 SIZES / GRANDEURS
 Adult / Adulte: 8 to / à 20
 Over size / Taille forte: 22 to / à 26



PAREO
 Style: PDIA7
 COULEUR / COLOR
 420 blue / bleu
 610 red / rouge
 310 green / vert
 SIZES / GRANDEURS
 Adult / Adulte: S to / à XL



V-NECK V-BACK TANK
 Style: TVDI7
 COULEUR / COLOR
 420 blue / bleu
 610 red / rouge
 310 green / vert
 SIZES / GRANDEURS
 Adult / Adulte: 8 to / à 20
 Over size / Taille forte: 22 to / à 26



CROSSOVER TANK
 Style: TXDI7
 COULEUR / COLOR
 420 blue / bleu
 610 red / rouge
 310 green / vert
 SIZES / GRANDEURS
 Adult / Adulte: 8 to / à 20
 Over size / Taille forte: 22 to / à 26



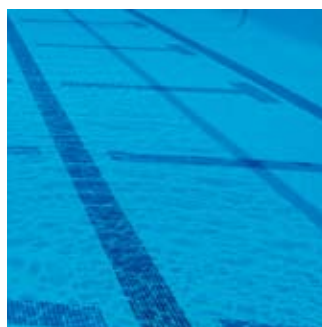
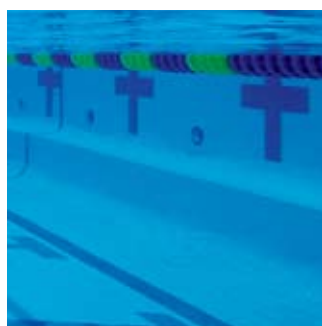
SQUARE NECK TANK
 Style: TSDI7
 COULEUR / COLOR
 420 blue / bleu
 610 red / rouge
 310 green / vert
 SIZES / GRANDEURS
 Adult / Adulte: 8 to / à 20
 Over size / Taille forte: 22 to / à 26



MOSAIC | **AQUA FITNESS**



AQUA TANK II
Style: TAMO7



FRONT PRINT AQUA TANK
Style: TCMO7



V-NECK V-BACK
Style: TVMO7
COULEUR / COLOR
420 blue / bleu
310 green / vert
SIZES / GRANDEURS
Adult / Adulte: 8 to / à 20
Over size / Taille forte: 22 to / à 26



VAPOR



AQUA TANK II
Style: TAVA7
COULEUR / COLOR
420 blue / bleu
610 red / rouge
710 gold / jaune
SIZES / GRANDEURS
Adult / Adulte: 8 to / à 20
Long: 8L to / à 20L
Over size / Taille forte: 22 to / à 26



HIGH NECK TANK
Style: THVA7
COULEUR / COLOR
420 blue / bleu
610 red / rouge
710 gold / jaune
SIZES / GRANDEURS
Adult / Adulte: 8 to / à 20
Over size / Taille forte: 22 to / à 26





princess seams AQUA TANK coutures princesse

Style: ATS1

COULEUR / COLOR
001 black / noir
401 navy / marine
425 royal

SIZES / GRANDEURS
Adult / Adulte: 8 to / à 20
Long: 8L to / à 20L
Over size / Taille forte: 22 to / à 26



SARONG TANK

Style: TSSO1

COULEUR / COLOR
001 black / noir
401 navy / marine
425 royal

SIZES / GRANDEURS
Adult / Adulte: 8 to / à 20
Over size / Taille forte: 22 to / à 26

SOLID AQUA FITNESS LYCRA®

PAREO

Style: PAREO1
COULEUR / COLOR
001 black / noir
401 navy / marine
425 royal
440 turquoise

SIZES / GRANDEURS
Adult / Adulte: S to / à XL



STARSEARCH AQUA FITNESS LYCRA®



AQUA TANK II

Style: TSTA1

COULEUR / COLOR
420 blue / bleu
610 red / rouge

SIZES / GRANDEURS
Adult / Adulte: 8 to / à 20
Over size / Taille forte: 22 to / à 26



V-NECK V-BACK

Style: TVSS1

COULEUR / COLOR
420 blue / bleu
610 red / rouge

SIZES / GRANDEURS
Adult / Adulte: 8 to / à 20
Over size / Taille forte: 22 to / à 26

ALSO / AUSSI **PAREO**

Style: PSTA1

COULEUR / COLOR
420 blue / bleu
610 red / rouge

SIZES / GRANDEURS
Adult / Adulte: S to / à XL



AQUA SHIFT™



AQUA SHIFT™ TECHNOLOGY

Aqua Shift™ was born at The Center for Research and Education in Special Environments (CRESE), University at Buffalo, State University of New York. CRESE has the ability to virtually simulate any environment on the planet, and some that are simply out of this world. Their extensive client list includes NASA and the Navy SEALs, just to name a few. CRESE also houses the world's only Annular Pool.

The development team from CRESE included physiologists who studied the effects of swimsuits in motion on the human body and biomechanical engineers focusing on the energetics of aquatic locomotion. With new testing protocols established, thousands of samples were drawn from each subject, at each velocity. The results provided a new window into sports science. The flow over the length of the swimmer's body is neither completely laminar nor turbulent, but a "noisy" ambient, both at the beginning and end of transition to turbulence, meaning the flow is "trippable".

Aqua Shift™ provides a significant reduction in wave and pressure drag through the theoretical and practical application of Tripwires. After studying and dissecting prior research as building blocks, our group of experts became the first ever to decompose drag. The end result is a dramatic reduction in overall drag and what is considered to be the most hydrodynamically efficient swimsuit on earth.

Unheard of in the science world. Unheard of in your world.

LA TECHNOLOGIE AQUA SHIFT™

Aqua shift™ est né au Centre pour la Recherche et l'Éducation en Environnements Spéciaux (CRESE) situé à l'Université d'État de New York à Buffalo. CRESE est capable de simuler virtuellement n'importe quel environnement de la planète, et même d'autres qui sont tout simplement d'un autre monde. La liste de leur clients comporte entre autres la NASA et les Navy SEALs. CRESE contient aussi la seule piscine en forme d'anneau au monde.

L'équipe de développement de CRESE comporte des physiologistes qui étudient les effets des maillots en mouvement sur le corps humain ainsi que des ingénieurs en biomécanique portant leur attention sur la mobilité aquatique. Avec de nouveaux protocoles de test, des milliers d'échantillons ont été pris de chaque sujet, à chaque vitesse. Les résultats ont ouvert une nouvelle fenêtre dans la science sportive. La glisse du corps du nageur n'est ni constante, ni turbulente, mais vibratoire, au début et à la fin des transitions vers la turbulence, ce qui signifie que l'écoulement peut «trébucher».

Aqua Shift™ fournit une réduction significative en vagues et en effet de retenue grâce aux «cordes à trébucher». Notre groupe d'expert a été le premier à décomposer la retenue. Ce qui en ressort est une réduction significative de la retenue dans l'eau et ce qui est considéré comme le maillot le plus hydrodynamiquement efficace de la terre.

Scientifiquement nouveau. Mondialement nouveau.



FEMALE FULL BODY AEROBACK

Style: ASFB6



COULEUR / COLOR
060 black-white / noir-blanc
408 navy-white / marine-blanc
473 royal-white / royal-blanc
SIZES / GRANDEURS
Adult / Adulte: 26-36

FEMALE FULL BODY ZIPPERBACK

Style: ASZF6



COULEUR / COLOR
044 uranium-red / uranium-rouge
SIZES / GRANDEURS
Adult / Adulte: 26-36

FEMALE SHORT JOHN AEROBACK

Style: ASSJ6



COULEUR / COLOR
060 black-white / noir-blanc
408 navy-white / marine-blanc
473 royal-white / royal-blanc
SIZES / GRANDEURS
Adult / Adulte: 24-36

FEMALE SHORT JOHN ZIPPERBACK

Style: ASZS6



COULEUR / COLOR
044 uranium-red / uranium-rouge
SIZES / GRANDEURS
Adult / Adulte: 24-36

FEMALE AEROBACK

Style: ASAB6



COULEUR / COLOR
060 black-white / noir-blanc
408 navy-white / marine-blanc
473 royal-white / royal-blanc
SIZES / GRANDEURS
Adult / Adulte: 20-38

MALE FULL BODY ZIPPERBACK

Style: ASMF6



COULEUR / COLOR
044 uranium-red / uranium-rouge
SIZES / GRANDEURS
Adult / Adulte: 26-36

MALE SHORT JOHN ZIPPERBACK

Style: ASMS6



COULEUR / COLOR
044 uranium-red / uranium-rouge
SIZES / GRANDEURS
Adult / Adulte: 24-36

MALE TIGHT

Style: ASTT6



COULEUR / COLOR
060 black-white / noir-blanc
408 navy-white / marine-blanc
473 royal-white / royal-blanc
SIZES / GRANDEURS
Adult / Adulte: 26-36

MALE JAMMER

Style: ASJR6



COULEUR / COLOR
060 black-white / noir-blanc
408 navy-white / marine-blanc
473 royal-white / royal-blanc
SIZES / GRANDEURS
Adult / Adulte: 20-36

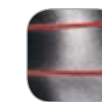
MALE RACER NEW

Style: ASER6



COULEUR / COLOR
060 black-white / noir-blanc
408 navy-white / marine-blanc
473 royal-white / royal-blanc
SIZES / GRANDEURS
Adult / Adulte: 20-36

COLOR / COULEUR



044 uranium-red / uranium-rouge



060 black-white / noir-blanc



408 navy-white / marine-blanc



473 royal-white / royal-blanc





TYR FUSION²

Our remarkably affordable TYR Fusion² technology is built with some of the most advanced aquatic engineering to ever enter a pool. First, we took existing and proven, patented technologies like Turbulence Control, TYR's unique water repellent coating, and a silky smooth finish for reduced drag. Then we married it to our tried-and-true innovations such as Fabrication Logic and Fluid Channel Dynamics for superior flow. Add in our unique, calendarized Isolated Compression technology for more glide efficiency, and less drag, and you have TYR Fusion².

It's what happens when the past and the future meet at the swim lab.

Notre technologie TYR Fusion², bien que remarquablement abordable, est bâtie grâce à l'ingénierie aquatique la plus avancée. Premièrement, nous avons utilisé des technologies brevetées ayant déjà fait leurs preuves, comme le Contrôle de la Turbulence, l'unique enduit imperméable de TYR et un fini soyeux afin de réduire l'effet de retenue. Nous les avons ensuite mariées à nos innovations éprouvées telles que Logique de Fabrication et Dynamique du Canal d'Eau pour un glissement supérieur. Ajoutez notre unique technologie de Compression Isolée calendrée pour plus d'efficacité de glisse et moins de retenue et vous obtenez TYR Fusion².

C'est ce qui arrive quand le passé et le futur se rencontrent au laboratoire de natation.



MALE RACER
Style: RFUS6
Sizes / Grandeurs: 20-36



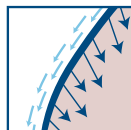
MALE JAMMER
Style: SFUS6
Sizes / Grandeurs: 20-36



MALE TIGHT
Style: TFUS6
Sizes / Grandeurs: 26-36

Compression technology reduces drag and improves fluid dynamics.

La technologie de compression réduit la l'effet de retenue et améliore la dynamique des fluides.



Water repellent coating channels water flow.

L'enduit imperméable canalise l'écoulement de l'eau



FEMALE AEROBACK
Style: AFUS6
Sizes / Grandeurs: 20-38



FEMALE SHORT JOHN
Style: ASFU6
Sizes / Grandeurs: 24-36

COLOR / COULEUR



001 BLACK / NOIR



401 NAVY / MARINE



428 ROYAL



WATER POLO

TYR STORM

FEMALE 1/2 ZIP WATER POLO TANK

Style: TSTM6

COULEUR / COLOR
001 black

SIZES / GRANDEURS
Adult / Adulte: 22-40

MALE BRIEF

Style: RSTO6

COULEUR / COLOR
001 black

SIZES / GRANDEURS
Adult / Adulte: 24-38

PREDATOR

FEMALE WATER POLO ZIPPERBACK

Style: WWP6

COULEUR / COLOR
001 black
401 navy
428 royal

SIZES / GRANDEURS
Adult / Adulte: 22-40

MALE WATER POLO RACER

Style: RWP6

COULEUR / COLOR
001 black
401 navy
428 royal

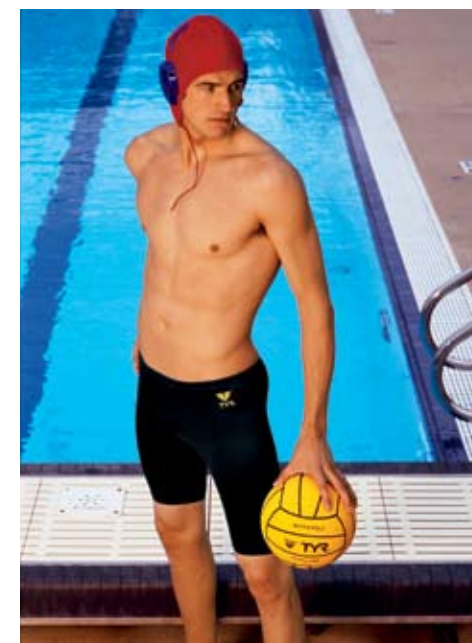
SIZES / GRANDEURS
Adult / Adulte: 24-36

MALE WATER POLO JAMMER

Style: SWPS6

COULEUR / COLOR
001 black
401 navy
428 royal

SIZES / GRANDEURS
Adult / Adulte: 24-38



WATER POLO CAP HOME-AWAY SET

Style: LWPSET

Master cap set (28 units) covers both home and away caps (numbers 2-13 plus goalie cap #1 and replacement cap #13)

COULEUR / COLOR
473 Royal (home) and White (away) sets.

WATER POLO CAP HOME-AWAY EXTENDER SET

Style: LWPSETEX

Extender cap set (18 units) covers both home and away caps (numbers 14-21 plus goalie cap #1A)

COULEUR / COLOR
473 Royal (home) and White (away) sets.



WATER POLO BALL

Style: LBALL

Available in official size 5 only. TYR water polo balls are designed to meet all USWP and FINA standards. Features:

- Natural rubber cover for durability.
- Hand buffed finish for better grip and handling.
- Self-sealing and lubricating replaceable valve.

COULEUR / COLOR
720 Yellow / jaune



TRAINING 2.0



POLY MESH TRAINER

Style: SPMT2

COLORS / COULEURS

001 black / noir
401 navy / marine
428 royal
610 red / rouge
Silver leg taping.

SIZES / GRANDEURS
28-40



8" NYLON REVERSIBLE TRAINER

Style: STR2

COLORS / COULEURS

002 black/red
407 navy/royal

SIZES / GRANDEURS
28-40



NYLON RACER

Style: RSN2

COLORS / COULEURS

001 Black / noir
401 Navy / marine
428 Royal

SIZES / GRANDEURS
Youth / Enfant: 8/22 to / à 14/28
Adult / Adulte: 30 to / à 40



SWIM SHORT/RESISTANCE SHORT

Style: SHS2

COLORS / COULEURS

001 Black
401 Navy
428 Royal
610 Red

SIZES / GRANDEURS
XS-XL



RESISTANCE TRAINER

Style: SDRA2

COLOR / COULEUR

001 Black

SIZES / GRANDEURS
XS-XL



ALSO / AUSSI FEMALE NYLON SUIT

Style: FSN2

COLOR / COULEUR

001 Black

401 Navy

428 Royal

SIZES / GRANDEURS
Youth / Enfant: 8/22 to / à 14/28
Adult / Adulte: 30 to / à 40

GUARD



WHAT SUPERHEROES WILL BE WEARING THIS SUMMER.

Rule #1 – Safety first. But we think comfort is a pretty close second. Our Guard collection is made from the same, winning technology, material and structure found in our competitive line. TYR's exclusive, long-lasting Guard suits also offer ultimate protection from chlorine and sun resistance while standing out in a crowd. A word of advice – Wear it with pride. After all, this is the official poolside uniform of role models, mentors and heroes nationwide.

CE QUE LES SUPERHÉROS PORTERONT CET ÉTÉ.

SPLICE DIAMONDBACK | NEW

style: DGSP1

COLOR / COULEUR

408 navy-white / marine-blanc
641 red-white / rouge-blanc

SIZES / GRANDEURS

Adult / Adulte: 30 to / à 40
lycra®

SPLICE DIAMONDBACK TANKINI | NEW

style: TGSP1

COLOR / COULEUR

408 navy-white / marine-blanc
641 red-white / rouge-blanc

SIZES / GRANDEURS

Adult / Adulte: 6 to / à 14
lycra®

DURAFAST MAXBACK

style: MGDF7

COLOR / COULEUR

001 black
401 navy
610 red

SIZES / GRANDEURS

Adult / Adulte: 30 to / à 40



DURAFAST MAXBACK AWORKOUT BIKINI

style: BGDF7

COLOR / COULEUR

401 navy
610 red

SIZES / GRANDEURS

Adult / Adulte: 6 to / à 14



TRAINING 2.0



POLY MESH TRAINER

Style: SPMT2

COLORS / COULEURS

001 black / noir
401 navy / marine
428 royal
610 red / rouge
Silver leg taping.

SIZES / GRANDEURS
28-40



8" NYLON REVERSIBLE TRAINER

Style: STR2

COLORS / COULEURS

002 black/red
407 navy/royal

SIZES / GRANDEURS
28-40



NYLON RACER

Style: RSN2

COLORS / COULEURS

001 Black / noir
401 Navy / marine
428 Royal

SIZES / GRANDEURS
Youth / Enfant: 8/22 to / à 14/28
Adult / Adulte: 30 to / à 40



SWIM SHORT/RESISTANCE SHORT

Style: SHS2

COLORS / COULEURS

001 Black
401 Navy
428 Royal
610 Red

SIZES / GRANDEURS
XS-XL



RESISTANCE TRAINER

Style: SDRA2

COLOR / COULEUR

001 Black

SIZES / GRANDEURS
XS-XL



ALSO / AUSSI FEMALE NYLON SUIT

Style: FSN2

COLOR / COULEUR

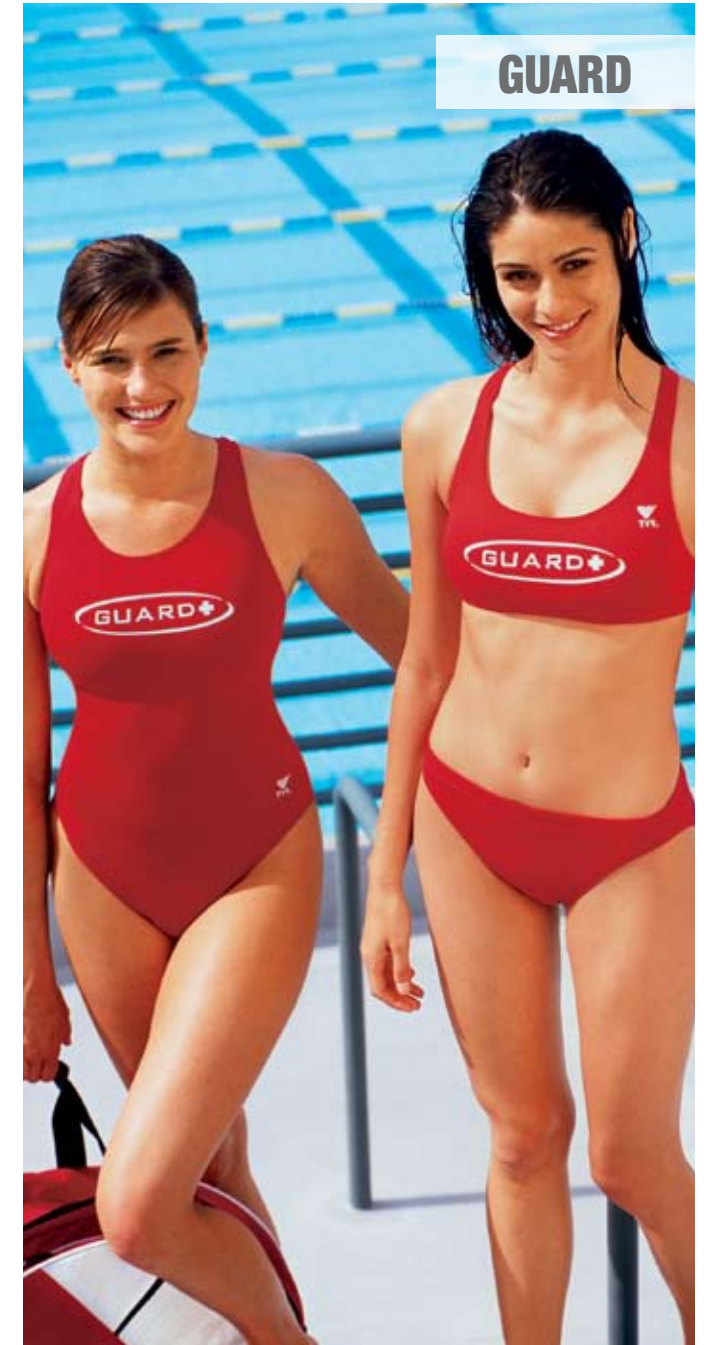
001 Black

401 Navy

428 Royal

SIZES / GRANDEURS
Youth / Enfant: 8/22 to / à 14/28
Adult / Adulte: 30 to / à 40

GUARD



WHAT SUPERHEROES WILL BE WEARING THIS SUMMER.

Rule #1 – Safety first. But we think comfort is a pretty close second. Our Guard collection is made from the same, winning technology, material and structure found in our competitive line. TYR's exclusive, long-lasting Guard suits also offer ultimate protection from chlorine and sun resistance while standing out in a crowd. A word of advice – Wear it with pride. After all, this is the official poolside uniform of role models, mentors and heroes nationwide.

CE QUE LES SUPERHÉROS PORTERONT CET ÉTÉ.

SPLICE DIAMONDBACK | NEW

style: DGSP1

COLOR / COULEUR

408 navy-white / marine-blanc
641 red-white / rouge-blanc

SIZES / GRANDEURS

Adult / Adulte: 30 to / à 40
lycra®

SPLICE DIAMONDBACK TANKINI | NEW

style: TGSP1

COLOR / COULEUR

408 navy-white / marine-blanc
641 red-white / rouge-blanc

SIZES / GRANDEURS

Adult / Adulte: 6 to / à 14
lycra®

DURAFAST MAXBACK

style: MGDF7

COLOR / COULEUR

001 black
401 navy
610 red

SIZES / GRANDEURS

Adult / Adulte: 30 to / à 40



DURAFAST MAXBACK AWORKOUT BIKINI

style: BGDF7

COLOR / COULEUR

401 navy
610 red

SIZES / GRANDEURS

Adult / Adulte: 6 to / à 14



GUARD



DIMAXBACK WORKOUT BIKINI

style: BMGU1

COLOR / COULEUR
401 navy / marine
610 red / rouge

SIZES / GRANDEURS
Adult / Adulte: 6 to / à 14

DIMAXBACK

style: DMGU1

COLOR / COULEUR
401 navy / marine
610 red / rouge

SIZES / GRANDEURS
Adult / Adulte: 30 to / à 40



DIMAXBACK TANKINI

style: TMGU1

COLOR / COULEUR
401 navy / marine
610 red / rouge

SIZES / GRANDEURS
Adult / Adulte: 6 to / à 14

TACTEL GUARD HYDROSHORT

style: DKSG2

COLOR / COULEUR
001 black
402 navy
610 red

SIZES / GRANDEURS
Adult / Adulte: S to / à XXL

MALE ELEMENT SHIRT | NEW

style: TGML7

COLOR / COULEUR
100 white / blanc
SIZES / GRANDEURS
Adult / Adulte: XS to / à XL

GUARD AERO TRUNK | NEW

style: TGTR5

COLOR / COULEUR
401 navy
610 red
SIZES / GRANDEURS
S to / à XXL



DURAFAST DIAMONDBACK | NEW

style: DGPL7

COLOR / COULEUR
401 navy
408 navy/white | NEW
610 red
641 red/white | NEW

SIZES / GRANDEURS
Adult / Adulte: 30 to / à 40



FEMALE T-SHIRT | NEW

style: TGFT3

COLOR / COULEUR
100 white / blanc
SIZES / GRANDEURS
Adult / Adulte: S-XL

FEMALE LONG BOARD SHORT | NEW

style: SGLB5

COLOR / COULEUR
401 navy / marine
610 red / rouge
SIZES / GRANDEURS
Adult / Adulte: XS-XL

FEMALE ELEMENT SHIRT | NEW

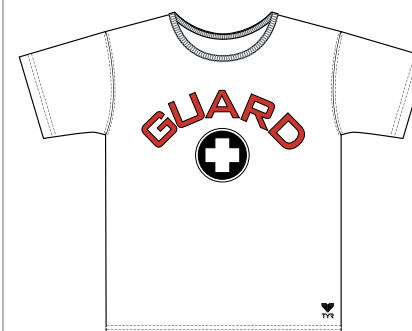
style: TGFL7

COLOR / COULEUR
100 white / blanc
SIZES / GRANDEURS
Adult / Adulte: XS-XL

FEMALE BOARD SHORT | NEW

style: SGBS5

COLOR / COULEUR
401 navy / marine
610 red / rouge
SIZES / GRANDEURS
Adult / Adulte: XS-XL



MALE T-SHIRT | NEW

style: TGMT3

COLOR / COULEUR
100 white / blanc
SIZES / GRANDEURS
Adult / Adulte: M-XL



GUARD CAP | NEW

style: LGCP

COLOR / COULEUR
401 navy / marine
610 red / rouge
SIZES / GRANDEURS
S/M, M/L, L/XL



GUARD HIP PACK

style: LGHP

COLOR / COULEUR
401 navy / marine
610 red / rouge
SIZES / GRANDEURS
one size



ALLIANCE



YOUTH WARM-UP SET
Style: WAYS2

COULEUR / COLOR
001 black / noir
401 navy / marine
428 royal
407 royal-gold / royal-jaune
610 red / rouge
SIZES / GRANDEURS
S-L

MALE WARM-UP JACKET
Style: WAMJ2

MALE WARM-UP PANTS
Style: WAMP2

COULEUR / COLOR
001 black / noir
401 navy / marine
428 royal
407 royal-gold / royal-jaune
610 red / rouge
SIZES / GRANDEURS
S-XL

FEMALE WARM-UP JACKET
Style: WAFJ2

FEMALE WARM-UP PANTS
Style: WAFP2

COULEUR / COLOR
001 black / noir
401 navy / marine
428 royal
407 royal-gold / royal-jaune
610 red / rouge
SIZES / GRANDEURS
S-XL



ALLIANCE APPAREL

PARKA
Style: WASP2

COULEUR / COLOR
001 black / noir
401 navy / marine
428 royal
610 red / rouge
SIZES / GRANDEURS:
XXS-XL (unisex)



WARM WEAR JACKET
Style: WAWJ2

COULEUR / COLOR
001 black / noir
401 navy / marine
428 royal
610 red / rouge
SIZES / GRANDEURS
XS-XXL (unisex)



SHORTS



MICROFIBER DRAGONFLY BOARD SHORT

Style: TDRA5

COULEUR / COLOR
103 white-black-turq. / blanc-noir-turq.
437 lt blue-brown-yellow / bleu pâle-brun-jaune

SIZES / GRANDEURS
30 to/à 38



MICROFIBER HIBISCUS BOARD SHORT

Style: TBSH5

COULEUR / COLOR
420 blue / bleu
202 dark chocolate / chocolat foncé

SIZES / GRANDEURS
30 to/à 38

MICROFIBER TRIPLE PIPE TRUNK

Style: TPIP5

COULEUR / COLOR
036 black-brown-beige / noir-brun-beige
261 beige-brown-black / beige-brun-noir
446 navy-turq.-white / marine-turq.-blanc
222 bordeau-black-white / bordeau-noir-blanc
440 turq.-white-navy / turq.-blanc-marine

SIZES / GRANDEURS
S-XL

ARROW MICROFIBER TRUNK

Style: TARO5

COULEUR / COLOR
009 black-turq.-white / noir-turq.-blanc
212 brown-lt blue-yellow / brun-bleu pâle-jaune
446 navy-turq.-lt blue / marine-turq.-bleu pâle

SIZES / GRANDEURS
S-XL



See price list for more TYR® shorts and details on availability of some of these articles in youth and kid sizes
Consultez la liste de prix pour d'autres shorts TYR® ainsi que pour la disponibilité de certains de ces articles pour jeunes et enfants

MULTI-SPORT



MAXBACK WOB TOP

Style: MTST6A

COULEUR / COLOR
001 black / noir
123 black-lilac / noir-lilas
384 navy-lime / marine-lime
100 white / blanc

SIZES / GRANDEURS
Adult / Adulte: XS to / à L



WOB BOTTOM WITH PAD

Style: MTSB6A

COULEUR / COLOR
001 black / noir
123 black-lilac / noir-lilas
384 navy-lime / marine-lime

SIZES / GRANDEURS
Adult / Adulte: XS to / à L



FEMALE SINGLET

Style: SSOL6A

COULEUR / COLOR
100 white / blanc
123 black-lilac / noir-lilas
384 navy-lime / marine-lime

SIZES / GRANDEURS
Adult / Adulte: XS to / à L



TANKINI

Style: TKSO6A

COULEUR / COLOR
123 black-lilac / noir-lilas
384 navy-lime / marine-lime

SIZES / GRANDEURS
Adult / Adulte: XS to / à L



MULTI-SPORT



MULTI-SPORT



FEMALE MAXBACK

Style: MTSO6A

COULEUR / COLOR
123 black-lilac / noir-lilas
384 navy-lime / marine-lime
SIZES / GRANDEURS
Adult / Adulte: 30 to / à 40



WRAP SKIRT

Style: STWP6A

COULEUR / COLOR
001 black / noir
401 navy / marine
SIZES / GRANDEURS
Adult / Adulte: XS to / à L



FEMALE TRIATHLON SUIT

Style: TSSO6A

COULEUR / COLOR
123 black-lilac / noir-lilas
384 navy-lime / marine-lime
SIZES / GRANDEURS
Adult / Adulte: XS to / à L



MALE TRIATHLON SUIT

Style: STSS6A

COULEUR / COLOR
610 black-red-white / noir-rouge-blanc
093 black-blue-white / noir-bleu-blanc
459 navy-grey-white / marine-gris-blanc (not shown)
SIZES / GRANDEURS
Adult / Adulte: S to / à XL



MALE SINGLET

Style: SSLD6A

COULEUR / COLOR
610 black-red-white / noir-rouge-blanc
093 black-blue-white / noir-bleu-blanc
459 navy-grey-white / marine-gris-blanc
100 white / blanc
(not shown)

SIZES / GRANDEURS
Adult / Adulte: S to / à XL



MALE TANK

Style: TSLM6A

COULEUR / COLOR
610 red-white / rouge-blanc
093 blue-white / bleu-blanc
SIZES / GRANDEURS
Adult / Adulte: S to / à XL



RACER WITH PAD

Style: RSSO6A

COULEUR / COLOR
001 black / noir
401 navy / marine

SIZES / GRANDEURS
Adult / Adulte: 30 to / à 40



UNISEX 9" RACE SHORT

Style: RSNi6A

COULEUR / COLOR
001 black / noir
SIZES / GRANDEURS
Adult / Adulte: XS to / à XL



UNISEX 5" RACE SHORT

Style: RSFi6A

COULEUR / COLOR
001 black / noir
SIZES / GRANDEURS
Adult / Adulte: XS to / à XL

YOUTH / JEUNES



SOLID | **YOUTH**

DURAFAST
100% POLYESTER



MAXBACK

Style: T610

COULEUR / COLOR

- 006 black-royal-white / noir-royal-blanc
- 404 navy-red-white / marine-rouge-blanc
- 429 st. blue-orange-white / bleu acier-orange-blanc
- 466 navy-apple-white / marine-pomme-blanc

SIZES / GRANDEURS
Girl / Fille: 6-16

SOLID | **YOUTH**

DURAFAST
100% POLYESTER



FLEXBACK
Style: T100

- COULEUR / COLOR**
- 401 navy / marine
 - 001 black / noir
 - 425 royal
 - 610 red / rouge
 - 220 bordeaux

- 350 kelly green / vert
- 628 raspberry / framboise
- 421 steel blue / bleu acier
- 810 orange
- 440 turquoise

SIZES / GRANDEURS
Girl / Fille: 6-16



MAXBACK

Style: T611

COULEUR / COLOR

- 435 navy-kelly-white / marine-vert-blanc
- 006 black-royal-white. / noir-royal-blanc.
- 474 royal-turq.-lt. blue / royal-turq.-bleu pâle
- 460 navy-rasp.-white / marine-framb.-blanc

SIZES / GRANDEURS
Girl / Fille: 6-16



VAPORBACK

Style: T410

COULEUR / COLOR

- 413 navy-orange-yellow / marine-orange-jaune
- 427 royal-navy-turq. / royal-marine-turq.
- 002 black-red-white / noir-rouge-blanc
- 606 burg.-rasp.-lilac / bourg.-framb.-lilas
- 475 turq.-royal-lt. blue / turq.-royal-bleu pâle

SIZES / GRANDEURS
Girl / Fille: 6-16



SPORTBACK

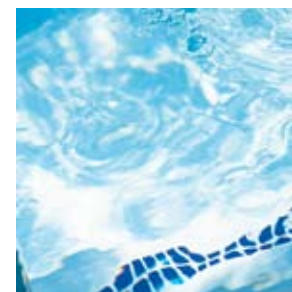
Style: T210

COULEUR / COLOR

- 018 black-kelly-white / noir-kelly-blanc
- 464 navy-royal-turq. / marine-royal-turq.
- 468 st. blue-rasp.-white / bleu acier-framb.-blanc
- 474 royal-turq.-lt. blue / royal-turq.-bleu pâle

SIZES / GRANDEURS
Girl / Fille: 6-16

YOUTH / JEUNES



SOLID YOUTH

DURAFAST™
100% POLYESTER



MAXBACK

Style: T610

COULEUR / COLOR

- 006 black-royal-white / noir-royal-blanc
- 404 navy-red-white / marine-rouge-blanc
- 429 st. blue-orange-white / bleu acier-orange-blanc
- 466 navy-apple-white / marine-pomme-blanc

SIZES / GRANDEURS
Girl / Fille: 6-16

SOLID YOUTH

DURAFAST™
100% POLYESTER



FLEXBACK

Style: T100

COULEUR / COLOR

- 401 navy / marine
- 001 black / noir
- 425 royal
- 610 red / rouge
- 220 bordeaux
- 350 kelly green / vert
- 628 raspberry / framboise
- 421 steel blue / bleu acier
- 810 orange
- 440 turquoise

SIZES / GRANDEURS

Girl / Fille: 6-16



MAXBACK

Style: T611

COULEUR / COLOR

- 435 navy-kelly-white / marine-vert-blanc
- 006 black-royal-white. / noir-royal-blanc.
- 474 royal-turq.-lt. blue / royal-turq.-bleu pâle
- 460 navy-rasp.-white / marine-framb.-blanc

SIZES / GRANDEURS
Girl / Fille: 6-16



VAPORBACK

Style: T410

COULEUR / COLOR

- 413 navy-orange-yellow / marine-orange-jaune
- 427 royal-navy-turq. / royal-marine-turq.
- 002 black-red-white / noir-rouge-blanc
- 606 burg.-rasp.-lilac / bourg.-framb.-lilas
- 475 turq.-royal-lt. blue / turq.-royal-bleu pâle

SIZES / GRANDEURS
Girl / Fille: 6-16



SPORTBACK

Style: T210

COULEUR / COLOR

- 018 black-kelly-white / noir-kelly-blanc
- 464 navy-royal-turq. / marine-royal-turq.
- 468 st. blue-rasp.-white / bleu acier-framb.-blanc
- 474 royal-turq.-lt. blue / royal-turq.-bleu pâle

SIZES / GRANDEURS
Girl / Fille: 6-16



DURAFAST™
100% POLYESTER

2PC SPORTBRA
Style: T102

COULEUR / COLOR
416 navy-s.blue-royal / marine-bleu c.-royal
654 violet-lilac-white / violet-lilas-blanc
629 rasp-navy-white / framb-marine-blanc

SIZES / GRANDEURS
Girl / Fille: 6-16



2PC SPORTBRA
Style: T112

COULEUR / COLOR
420 blue / bleu
655 violet

SIZES / GRANDEURS
Girl / Fille: 6-16



SPORTBACK

STYLE: T310
COULEUR / COLOR
420 blue / bleu
660 pink / rose

SIZES / GRANDEURS
Girl / Fille: 6-16



DURAFAST™
100% POLYESTER

MAXBACK

STYLE: T350
COULEUR / COLOR
420 multi-blue / bleu-multi
670 multi-pink / rose-multi

SIZES / GRANDEURS
Girl / Fille: 6-16



2PC HALTER
Style: T606

COULEUR / COLOR
416 navy-sky blue / marine-bleu ciel
654 violet-lilac / violet-lilas
629 rasp.-navy / framb.-marine
228 brown-khaki / brun-khaki

SIZES / GRANDEURS
Girl / Fille: 6-16



2PC HALTER
Style: T612

COULEUR / COLOR
420 blue / bleu
655 violet

SIZES / GRANDEURS
Girl / Fille: 6-16



2PC HALTER
Style: T650



2PC SPORTBRA
Style: T250



2PC SPORTBRA
Style: T122

COULEUR / COLOR
228 brown-khaki / brun-khaki

SIZES / GRANDEURS
Girl / Fille: 6-16



TANKINI SQ.LEG
Style: T810

COULEUR / COLOR
416 navy-sky blue / marine-bleu ciel
654 violet-lilac / violet-lilas
228 brown-khaki / brun-khaki

SIZES / GRANDEURS
Girl / Fille: 6-16



TANKINI SQ.LEG
Style: T812

COULEUR / COLOR
420 blue / bleu
655 violet

SIZES / GRANDEURS
Girl / Fille: 6-16



SPORTBACK
Style: T312

COULEUR / COLOR
420 blue / bleu
655 violet

SIZES / GRANDEURS
Girl / Fille: 6-16



TANKINI SQ.LEG
Style: T850



MAXBACK
Style: T351

COULEUR / COLOR
210 brown / brun

SIZES / GRANDEURS
Girl / Fille: 6-16

KIDS ASSORTED ASSORTIS ENFANTS



SEE PRICE LIST FOR MORE DETAILS

CONSULTEZ LA LISTE DE PRIX POUR PLUS DE DÉTAILS



THERMALWEAR

Suits are assorted and may differ from picture
Les maillots sont assortis et peuvent différer de la photo



TYR GOGGLES AND ACCESSORIES

USER CATEGORIES:

racing Competitive swimmers and racers favor goggle models in this category. Les nageurs compétitifs préfèrent les lunettes de cette catégorie.	performance Designed to fit a wide range of facial types and sizes with comfort being a key attribute. Can be used for both training and racing. Fabriquées pour faire confortablement à différents types de visages. Peuvent être utilisées pour l'entraînement et la compétition.	female Specifically designed to fit smaller facial contours and narrower eye focal widths. Créées spécialement pour faire à des visages plus étroits avec moins d'espace entre les yeux.	junior / youth Designed to fit children, youths and adults with smaller facial features. Fabriquées pour faire aux enfants, aux jeunes ainsi qu'aux adultes aux visages plus petits.	water sports Category users include triathletes, recreational water enthusiasts, open water and fitness swimmers. Les utilisateurs de cette catégorie sont entre autres des triathlètes, des amateurs des sports d'eau et des nageurs



SWIMPLE NEW

as swimple as A,B,C

Tired of struggling with goggles to get just the right, snug fit on your kid? Now, kids will no longer come pulling on your leg asking for help because with Swimple they'll enjoy doing it all on their own. The headstrap on our new youth goggle adjusts by merely pressing down on the release button, holding down and pulling the strap through until you find the perfect fit. Swimple child's play.

- Small, uni-body frame is designed specially for children.
- Easy-to-fit, pliable silicone frame requires no adjustment.
- Easy adjust release button allows for no fuss headstrap adjustment.
- Split headstrap provides a comfortable, secure fit.
- Soft hypo-allergenic silicone gaskets provide watertight seal.
- Optical grade, polycarbonate lenses are anti-fog and UV protected lenses.

LGSW

085 smoke / green
105 clear / translucent blue
420 blue / translucent clear
660 rose / translucent clear



junior





GOGGLES / LUNETTES

SOCKET ROCKETS™ 2.0

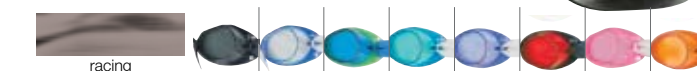
This sleek and streamlined SWEDISH type design continues to be the #1 racing goggle choice worldwide and it's no surprise. It comes assembled and features a TPR cushion gasket for a superior, low profile fit that refuses to leak. It also boasts unobstructed 180 degree peripheral vision.

- Low profile, wide peripheral-vision lenses.
- Optical grade polycarbonate lenses are UV protected.
- Easy-to-fit socket design features soft TPR gaskets and a double latex headstrap.
- Includes optional string nosepiece.



LGL2

- 041 smoke/black
- 105 clear/translucent blue
- 420 blue/translucent green
- 441 aqua/translucent blue
- 510 purple/translucent purple
- 610 red/black
- 660 rose/pink
- 700 amber/translucent amber



VELOCITY

Advanced, dual headstrap performance design offers low profile hydrodynamics, with patented cushion gaskets for a comfortable, leak-proof fit.

- Racing frame features patented silicone cushion gaskets and a multi-sized nosepiece system for customized fit.
- Optical grade polycarbonate lenses provide excellent peripheral vision, are anti-fog and UV protected.
- Double, silicone headstrap features patented top slotted clip to prevent strap slippage and allow easy adjustment.

LGV

- 041 smoke
- 101 clear
- 420 blue



SOCKET ROCKETS™ 2.0 METALLIZED

Offers the same great features as Socket Rockets™ 2.0, plus the anti-glare properties and the benefits of anti-fog coating. Socket Rockets™ 2.0 Metallized comes in three exciting elemental colorways, Ice, Fire and Ocean. Has Clear Mirror Technology, which works well for indoor use and features an innovative and unique mirrored coating.

- Low profile, wide peripheral-vision lenses.
- Optical grade polycarbonate lenses are UV protected.
- Easy-to-fit socket design features soft TPR gaskets and a double latex headstrap.
- Includes optional string nosepiece.

LGL2M

- 150 clear mirror ice
- 160 metallic fire
- 161 metallic ocean



VELOCITY METALLIZED

Velocity Metallized offers the same great features as our Velocity goggle with the addition of advanced anti-glare and anti-fog properties.

- Racing frame features patented silicone cushion gaskets and a multi-sized nosepiece system for a customized fit
- Optical grade polycarbonate lenses provide excellent peripheral vision, are anti-fog and UV protected.
- Double, silicone headstrap features patented top slotted clip to prevent strap slippage and allow easy adjustment.

LGVM

- 095 metallized silver
- 481 metallized ice blue
- 661 metallized pink



AQUA SHIFT™ ROCKETS

It's true, we've built a reputation for our one-pieces.

Now we are proud to introduce our latest innovation. The Aqua Shift™ Rockets is the only uni-body goggle designed specifically for racing and features unequalled dual headstrap posts for the perfect, non-slip fit. Leaking is non-existent, while comfort and fit has never felt better. It also boasts unobstructed 180-degree peripheral vision. So now you'll have an impeccable view of just how far back your competition is.

- Easy-to-fit socket design requires no adjustment.
- Low profile, wide peripheral vision lenses have soft Thermo Plastic Rubber (TPR) gaskets.
- Flexible and lightweight frame.
- Optical grade polycarbonate lenses are anti-fog and UV protected.
- Double headstraps with tension elastic memory for a comfortable, secure fit.

LGAQS

- 041 smoke
- 101 clear
- 420 blue



ADVANT

The Advant features breakthrough Double-Layer Gasket Technology that provides a comfortable, leak-proof seal. This is achieved by integrating a stabilizing silicone ring between two thin layers of high-density neoprene racing foam.

- Low profile, wide peripheral-vision frame features a multi-sized nosepiece.
- Optical grade polycarbonate lenses are anti-fog and UV protected.
- Double, silicone headstrap features side sleeves and patented top slotted clip to prevent strap slippage and allow for easy adjustment.
- Recommended for racing and elite training.

LGAD

041 smoke
101 clear
420 blue



RACETECH® REVEAL

This uni-body, flexible frame goggle features a unique half-frame design that exposes the lenses, allowing in more light for improved peripheral vision. Features a unique dual compression headstrap.

- Pliable, one-piece Silicone FlexFrame™ is hypo-allergenic and requires no adjustments providing a universal fit.
- Unique half-frame design is light weight and offers greater optical clarity and improved peripheral vision.
- New and unique dual injected, split headstrap.

LGREV

041 smoke
101 a. clear
420 blue



TECHNOFLEX® 2.0 JR.

The Technoflex 2.0 Jr. has the same great features as the Technoflex goggle, but with a smaller more compact size, perfect for swimmers with smaller faces and children.

- Pliable, one-piece Thermo Plastic Rubber (TPR) FlexFrame™ is hypo-allergenic and offers a leak-proof, custom fit.
- Optical grade, low profile polycarbonate lenses are anti-fog and UV protected.
- Durable, split TPR headstrap provides a comfortable yet secure fit.
- Easy adjust T-slot sideclips allow for quick, secure adjustment.

LGX2Y

041 smoke / smoke
085 smoke / fluorescent green
101 clear / clear
465 blue / translucent yellow
670 laguna blue / bright pink



X-SIGHT™

The X-Sight combines the flexible Thermo Plastic Rubber TPR uni-body frame with the comfort of neoprene gaskets and a unique flexible nose bridge design. The X-Sight features a larger frame size, recommended for adults.

- Ultra smooth Glideskin neoprene gaskets reduce skin marks and create a water-tight fit.
- Non-surround, suspended lens increases light absorption.
- Features lens within-a-lens for improved peripheral vision.
- Durable, split TPR head strap provides a comfortable, yet secure fit.
- Optical grade polycarbonate lenses are anti-fog and UV protected.

LGXSITE

041 smoke
101 clear
420 blue



TECHNOFLEX® 2.0

The Technoflex® 2.0 revolutionizes goggle performance with next generation, soft frame technology. Using an innovative bonding system that vulcanizes lens and frame components resulting in a leak-proof, low profile goggle for both racing and training.

- Pliable, one-piece Thermo Plastic Rubber (TPR) FlexFrame™ is hypo-allergenic.
- Optical grade, low profile polycarbonate lenses are anti-fog and UV protected.
- Durable, split TPR headstrap provides a comfortable yet secure fit.
- Easy adjust T-slot sideclips allow for quick, secure adjustment.
- The Technoflex features a larger frame size, recommended for adults.

LGX2

041 smoke / smoke
101 clear / clear
420 blue / translucent blue
660 clear / rose



TECHNOFLEX® VISION™

Aggressive design and shape increases peripheral vision and light absorption, vulcanized lens and frame gives the goggle a leak-proof seal. The Technoflex Vision has a universal fit recommended for youth and adults.

- Pliable, one-piece TPR FlexFrame™ is hypo-allergenic.
- Optical grade, low profile polycarbonate lenses are anti-fog and UV protected.
- Durable, split silicone headstrap provides a comfortable yet secure fit.
- Easy adjust integral double T-slot sideclips allow for quick, secure adjustment.

LGXVIS

041 smoke / black
101 clear / ice blue
420 blue / silver
450 ice blue / pearlized white
660 rose / pink



RACEFLEX

A revolution in racing goggle design, the Raceflex combines soft frame technology with advanced racing dynamics. The result is a low profile, high performance uni-body goggle with superior fit and optical properties.

- Pliable, hypo-allergenic one-piece Thermo Plastic Rubber (TPR) FlexFrame™ features extra durable lens-frame adhesion to provide a leak-proof custom fit.
- Optical grade, flush mounted polycarbonate lenses are anti-fog and UV protected.
- Durable, split silicone headstrap provides a comfortable yet secure fit.
- Recommended for racing, training and triathletes.

LGRF

041 smoke/translucent smoke
101 clear/translucent clear
420 blue/translucent blue
510 purple/translucent purple



RACETECH® METALLIZED

Racetech Metallized offers the same great features as our Racetech goggle with the addition of advanced anti-glare properties.

- Low profile, wide angle anti-fog lenses, leak-proof silicone gaskets.
- Universal fit, easy adjust sideclips and UV protection.
- Soft, split silicone headstrap for a comfortable fit

LGRM

075 silver / black
481 blue / ice blue
661 raspberry / pink



CORRECTIVE OPTICAL

TYR's Corrective Optical is a distinctive "step diopter" goggle in spherical prescription lens options. It features a universal eye socket frame design for superior fit.

- Wide angle, optical grade polycarbonate lenses in corrective diopters (-2.0 through -8.0)
- Comfortable silicone gaskets provide both comfort and leak-proof fit.
- Durable, split silicone headstrap provides a comfortable yet secure fit.
- Easy adjust snap lock sideclips.
- Optical grade polycarbonate lenses are UV protected.

LGOPT

041 smoke
101 clear



RACETECH®

Racetech is the standard by which other goggles' fit is measured and is the choice for both competitive and recreational swimmers. The Racetech fits everyone from eight to eighty years of age, with its low profile design and comfortable split headstrap.

- Low profile, wide angle anti-fog lenses, leak-proof TPR gaskets.
- Universal fit, easy adjust sideclips and UV protection.
- Split latex headstrap for a comfortable fit

LGR

041 smoke
101 clear
420 blue
441 aqua
531 lavender
660 rose
700 amber



TEAM SPRINT

Features low profile, wide angle socket lenses, comfortable foam gaskets, easy adjust nosepiece, split latex headstrap and UV protection. Excellent fit for children and adults.

- Recommended for training and racing

LGT

041 smoke
101 clear
420 blue



X-SIGHT™ LITE

The X-Sight Lite is an aggressive design from the popular X-Sight family. The X-Sight Lite uses the same innovative uni-body design combined with Glideskin neoprene gaskets, as the X-Sight, which provides a leak-proof, custom fit.

- Smaller frame fits wide range of faces from youth to adult.
- Non-surround, suspended lens provides for light absorption and a wider field of vision.
- Durable, split TPR headstrap.
- Optical grade, polycarbonate lenses are anti-fog and UV protected.
- Designed for racing, training and triathletes.

LGXSITEL

041 smoke/silver
101 clear/pearlized white
465 blue/translucent yellow
660 rose/pink
531 lavender/ pearlized white



X-SIGHT™ METALLIZED

X-Sight Metallized offers the same great features as our X-Sight goggle with the addition of advanced anti-glare properties. The X-Sight Metallized features a larger frame size, recommended for adults. Optical grade polycarbonate lenses are anti-fog and UV protected.

- Ultra smooth Glideskin neoprene gaskets reduce indentations and create a water-tight fit.
- Unique flexible nose bridge design.
- Non-surround, suspended lens increases light absorption.
- Features lens within-a-lens for improved peripheral vision.
- Durable, split TPR head strap provides a comfortable, yet secure fit.



LGXSITEM
036 graphite silver



FEMME T-72® ELLIPSE METALLIZED

The Femme T-72 Ellipse has been designed to provide advanced, low profile racing dynamics in addition to outstanding fit and comfort.

- Anatomically designed frame features a universal nosepiece system and leakproof, hypo-allergenic silicone gaskets.
- Optical grade polycarbonate lenses provide excellent peripheral vision, are anti-fog and UV protected.
- Durable, rear adjusting split silicone headstrap allows independent strap adjustment.
- Recommended for racing and elite level female training.



LGFCM
041 metallized smoke
481 metallized blue
750 metallized gold



YOUTH FLEXFRAME

Small, uni-body frame is designed specially for children. Features easy-to-fit, pliable silicone frame that requires no adjustment. Split headstrap for secure fit includes easy adjust sideclips. Safe, shatter resistant lenses are anti-fog and UV protected.

- Recommended for children and smaller adult faces.



LGYFLX
042 smoke / pink
085 smoke / multi green
101 clear / multi
419 blue / navy
420 blue / clear
531 lavender / clear



FEMME RACETECH® REVEAL

With the same genetic make-up as the Racetech Reveal, the Femme Racetech Reveal infuses the classic goggle design with refreshing colors. It's a goggle that a girl might not buy just one of – she'll get one in every color.

- Pliable, one-piece Silicone FlexFrame™ is hypo-allergenic and requires no adjustments providing a universal fit.
- Unique half-frame design is lightweight and offers greater optical clarity and improved peripheral vision.
- New and unique dual injected split headstrap.



LGFREV
332 mint / pearlized white
450 ice blue / pearlized blue
531 lavender / pearlized white



FEMME T-72® PETITE

Compact design developed for smaller female and youth faces. Features: polycarbonate lenses, multi-position nosepiece, easy adjust sideclips, soft silicone gaskets, anti-fog and UV protection.

- Recommended for recreational female swimmers.
- Now with a new and unique dual injected split headstrap.



LGFP
041 smoke / smoke
101 clear / ice blue
420 blue / light blue
660 rose / light pink



YOUTH FLEXFRAME METALLIZED

Youth Flexframe Metallized offers the same great features as our Youth Flexframe goggle with the addition of advanced anti-glare properties.

- Recommended for children and smaller adult faces.



LGYFLXM
420 metal / blue
610 metal / red



YOUTH QUALIFIER

The Qualifier features a low profile design with advanced racing dynamics. Offers universal, comfortable fit with soft silicone gaskets, split silicone headstrap, easy adjust side clips and adjustable nosepiece. Safe, shatter resistant lenses are anti-fog and UV protected.

- Recommended for children and smaller adult faces.



LGQUAL
041 smoke / black
101 clear / blue
420 blue / clear
660 rose / pink
700 amber / blue



YOUTH FOAM

Small frame specifically designed for children. Features safe, shatter resistant lenses, comfortable foam gaskets, easy adjust sideclips, split latex headstrap and UV protection.

- Recommended for children and smaller adult faces.



LGY
041 smoke / black
101 clear / black
420 blue / black
510 purple/black
700 dark amber/black



HYDROVISION

Smaller mask size has a universal fit. Fits both children and adults. Features large lens for maximum visibility. Soft hypo-allergenic silicone gasket skirt provides a watertight seal. Includes nylon mesh pouch for storage and lens protection.

- Features engineered easy-adjust head strap with wide/narrow split and molded grooves to ensure a secure fit.
- Optical grade polycarbonate lenses are anti-fog and UV protected.



LGHMSK
041 smoke / black
101 clear / silver
105 clear / electric blue
420 blue / light blue



CHILDREN'S CHARACTER GOGGLES

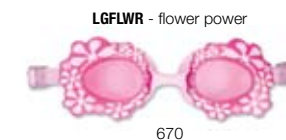
Children's Character Goggles make swimming fun with playful designs for boys and girls. Features comfortable watertight silicone gaskets, easy adjust side clips and split silicone headstraps. Small, uni-body frame is designed specially for children. Safe, shatter resistant lenses are anti-fog and UV protected.

colors
420 blue / blue
670 rose / pink
720 yellow / yellow



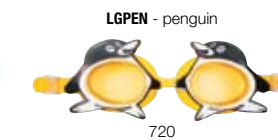
LGSACE - space aliens

420



LGLWR - flower power

670



LGPEN - penguin

720

ONE-EIGHTY MAX™ NEW

The One-Eighty Max™ unites a frame that provides a wider-field of vision with a low-profile, hydrodynamic fit you've come to expect from a goggle. Plus, the new aspheric lens design features an exclusive 4-way bend construction that provides distortion-free peripheral vision. The One-Eighty Max is a large sized goggle recommended for adults.

- 180° peripheral vision exceeds combined vertical and horizontal vision offered in competitive products.
- Durable, polycarbonate lenses offer greater impact resistance over heat bent cellulose propionate or acrylic lenses. Lenses are anti-fog, anti-scratch and UV protected.



LGMAX
041 smoke / black
101 a. clear / clear translucent
420 blue / metallic azure



SWIMMASK

Designed specifically for swimming, the oversize anti-fog lens design provides full vertical and peripheral vision. The soft hypo-allergenic silicone gasket skirt maintains a comfortable, yet watertight seal. Includes nylon mesh pouch for storage and lens protection.

- Features engineered easy-adjust head strap with wide/narrow split and molded grooves to ensure a secure fit.
- Optical grade polycarbonate lenses are anti-fog and UV protected.



LGMSK
064 smoke / black-silver
105 clear / blue frame
420 blue / clear



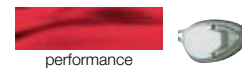
X-SIGHT™ METALLIZED

X-Sight Metallized offers the same great features as our X-Sight goggle with the addition of advanced anti-glare properties. The X-Sight Metallized features a larger frame size, recommended for adults. Optical grade polycarbonate lenses are anti-fog and UV protected.

- Ultra smooth Glideskin neoprene gaskets reduce indentations and create a water-tight fit.
- Unique flexible nose bridge design.
- Non-surround, suspended lens increases light absorption.
- Features lens within-a-lens for improved peripheral vision.
- Durable, split TPR head strap provides a comfortable, yet secure fit.



LGXSITEM
036 graphite silver



FEMME T-72® ELLIPSE METALLIZED

The Femme T-72 Ellipse has been designed to provide advanced, low profile racing dynamics in addition to outstanding fit and comfort.

- Anatomically designed frame features a universal nosepiece system and leakproof, hypo-allergenic silicone gaskets.
- Optical grade polycarbonate lenses provide excellent peripheral vision, are anti-fog and UV protected.
- Durable, rear adjusting split silicone headstrap allows independent strap adjustment.
- Recommended for racing and elite level female training.



LGFCM
041 metallized smoke
481 metallized blue
750 metallized gold



YOUTH FLEXFRAME

Small, uni-body frame is designed specially for children. Features easy-to-fit, pliable silicone frame that requires no adjustment. Split headstrap for secure fit includes easy adjust sideclips. Safe, shatter resistant lenses are anti-fog and UV protected.

- Recommended for children and smaller adult faces.



LGYFLX
042 smoke / pink
085 smoke / multi green
101 clear / multi
419 blue / navy
420 blue / clear
531 lavender / clear



FEMME RACETECH® REVEAL

With the same genetic make-up as the Racetech Reveal, the Femme Racetech Reveal infuses the classic goggle design with refreshing colors. It's a goggle that a girl might not buy just one of – she'll get one in every color.

- Pliable, one-piece Silicone FlexFrame™ is hypo-allergenic and requires no adjustments providing a universal fit.
- Unique half-frame design is lightweight and offers greater optical clarity and improved peripheral vision.
- New and unique dual injected split headstrap.



LGFREV
332 mint / pearlized white
450 ice blue / pearlized blue
531 lavender / pearlized white



FEMME T-72® PETITE

Compact design developed for smaller female and youth faces. Features: polycarbonate lenses, multi-position nosepiece, easy adjust sideclips, soft silicone gaskets, anti-fog and UV protection.

- Recommended for recreational female swimmers.
- Now with a new and unique dual injected split headstrap.



LGFP
041 smoke / smoke
101 clear / ice blue
420 blue / light blue
660 rose / light pink



YOUTH FLEXFRAME METALLIZED

Youth Flexframe Metallized offers the same great features as our Youth Flexframe goggle with the addition of advanced anti-glare properties.

- Recommended for children and smaller adult faces.



LGYFLXM
420 metal / blue
610 metal / red



YOUTH QUALIFIER

The Qualifier features a low profile design with advanced racing dynamics. Offers universal, comfortable fit with soft silicone gaskets, split silicone headstrap, easy adjust side clips and adjustable nosepiece. Safe, shatter resistant lenses are anti-fog and UV protected.

- Recommended for children and smaller adult faces.



LGQUAL
041 smoke / black
101 clear / blue
420 blue / clear
660 rose / pink
700 amber / blue



YOUTH FOAM

Small frame specifically designed for children. Features safe, shatter resistant lenses, comfortable foam gaskets, easy adjust sideclips, split latex headstrap and UV protection.

- Recommended for children and smaller adult faces.



LGY
041 smoke / black
101 clear / black
420 blue / black
510 purple/black
700 dark amber/black



HYDROVISION

Smaller mask size has a universal fit. Fits both children and adults. Features large lens for maximum visibility. Soft hypo-allergenic silicone gasket skirt provides a watertight seal. Includes nylon mesh pouch for storage and lens protection.

- Features engineered easy-adjust head strap with wide/narrow split and molded grooves to ensure a secure fit.
- Optical grade polycarbonate lenses are anti-fog and UV protected.



LGHMSK
041 smoke / black
101 clear / silver
105 clear / electric blue
420 blue / light blue



CHILDREN'S CHARACTER GOGGLES

Children's Character Goggles make swimming fun with playful designs for boys and girls. Features comfortable watertight silicone gaskets, easy adjust side clips and split silicone headstraps. Small, uni-body frame is designed specially for children. Safe, shatter resistant lenses are anti-fog and UV protected.

colors
420 blue / blue
670 rose / pink
720 yellow / yellow



420



670



720

ONE-EIGHTY MAX™ NEW

The One-Eighty Max™ unites a frame that provides a wider-field of vision with a low-profile, hydrodynamic fit you've come to expect from a goggle. Plus, the new aspheric lens design features an exclusive 4-way bend construction that provides distortion-free peripheral vision. The One-Eighty Max is a large sized goggle recommended for adults.

- 180° peripheral vision exceeds combined vertical and horizontal vision offered in competitive products.
- Durable, polycarbonate lenses offer greater impact resistance over heat bent cellulose propionate or acrylic lenses. Lenses are anti-fog, anti-scratch and UV protected.



LGMAX
041 smoke / black
101 a. clear / clear translucent
420 blue / metallic azure



SWIMMASK

Designed specifically for swimming, the oversize anti-fog lens design provides full vertical and peripheral vision. The soft hypo-allergenic silicone gasket skirt maintains a comfortable, yet watertight seal. Includes nylon mesh pouch for storage and lens protection.

- Features engineered easy-adjust head strap with wide/narrow split and molded grooves to ensure a secure fit.
- Optical grade polycarbonate lenses are anti-fog and UV protected



LGMSK
064 smoke / black-silver
105 clear / blue frame
420 blue / clear



SWIM CAPS / CASQUES DE BAIN



Whether you're seeking protection from damaging chlorine or simply trying to look good against the competition, our swim caps will do you justice. Designed with a precision fit for reduced drag, they're also tear resistant. Our caps are made to slide on easily, and stay on. There are three compositions and two sizes to choose from:

SILICONE – Two sizes, Classic and Junior. Popular in the racing world, our Silicone caps are soft, durable and will retain their colors for race seasons to come.

LATEX – A TYR classic. These original, lightweight caps are proven and have a reputation for a perfect fit.

LYCRA® – Specifically designed with the recreational swimmer in mind, our Lycra caps are extremely comfortable and they will not pull or snag.

CLASSIC SIZE – Larger size. Fits adults and children.

JUNIOR SIZE – Smaller size. Fits children and adults.

AQUA SHIFT™ SWIM CAP

Leading edge racing cap design. Utilizes Tripwire technology to reduce drag. Rounded, wrinkle-free design improves fit and prevents slippage. Silicone material is UV resistant and easy to put on. classic size

Style: ASCP
001 black
049 uranium
100 white
310 green
401 navy
428 royal
610 red
653 violet
720 yellow



WRINKLE-FREE SILICONE CAP

Raised logo, round wrinkle-free design for better fit and reduced drag. Non-slip interior, tear resistant and easy to put on. classic size

Style: LCS
001 black
040 silver
100 white
310 green
401 navy
420 blue
510 purple
610 red
653 violet
720 yellow



SILICONE JUNIOR RACER CAP

Raised logo, round wrinkle-free design for better fit and reduced drag. Non-slip interior, tear resistant and easy to put on. junior size

Style: LCSJR
001 black
100 white
401 navy
428 royal
510 purple
670 pink
731 lt.yellow



MULTI SILICONE CAP

Round Wrinkle-free design for better fit and reduced drag. Non-slip interior, tear resistant and easy to put on. Exciting color combinations. classic size

Style: LCSM
002 black / red | **NEW**
014 black / green | **NEW**
310 green / blue multi
420 blue multi
547 purple / pink multi



BEIJING BOUND™ DRAGON SILICONE CAP

creative cap classic size

Style: LCSBJDRA
001 black
610 red



FREAK N' FAST

classic size

Style: LCSFREAK
100 white



SLIPPERY WHEN WET

junior size

Style: LCSDOLF
100 white



GIRL POWER

classic size

Style: LCSGIRL
100 white



SMILEY FACE

classic size

Style: LCSTMILE
100 white



DON'T WORRY SWIM HAPPY

junior size

Style: LCSDUCK
100 white



LATEX SWIM CAP

Standard 30 gram weight, durable ribbed edge for a secure fit. classic size

Style: LCL
001 black
040 silver
100 white
310 green
322 flor. green
401 navy
428 royal
510 purple
610 red
670 pink
720 yellow
820 flor. orange



LYCRA® SWIM CAP

Extremely comfortable. classic size

Style: LCY
001 black
100 white
401 navy
428 royal
610 red
670 pink
510 purple
310 green
810 orange
720 yellow
970 assorted



TRAINING EQUIPMENT

STREAMLINE™ TRAINING BOARD

The moment you enter the water with the StreamLine Training Board, you'll notice that this isn't just an ordinary kickboard. On the contrary, the StreamLine reduces and relieves unnecessary stress on your shoulders because it allows you to mimic the body's natural swimming position. Foam molded hand-grippers allow you to drive gracefully in a streamline motion while the tracking channels on both sides keep you in place, along with increased maneuverability for quick turns. So if you begin to drift, don't blame the board. U.S. Patent No. D453,367. U.S. Patent No. 6,840,831 B2. U.S. Patent No. 6,872,111 B2.



Style: LKSTR
428 royal
720 yellow



KICKBOARD

Helps improve leg strength through kicking. Durable 20" X 11.5" Closed cell EVA foam.

Style: LKB
720 yellow



JR. KICKBOARD

Smaller design, perfect for youth and smaller swimmers. Durable 14.5" X 10" Closed cell EVA foam.

Style: LKBJR
420 blue



PULL FLOAT

Develops arm strength by immobilizing the legs. 6" EVA foam. White and blue laminate.

Style: LPF
462 blue / white



JR. PULL FLOAT

Smaller in size, perfect for smaller swimmers. 4.75" EVA foam. Yellow and Blue laminate.

Style: LPFJR
465 blue / yellow



FLEXFINS™

Flexfins are designed to increase leg strength and foot flexibility. Color coordinated by size for easy identification.

Style: LFN

Male sizes:
XXXS (12-1)
XXS (1-3)
XS (3-5)
S (5-7)
For female equivalent size down 1-2 sizes.



FIN BOOT

Specially designed to be worn with fins. Features: soft, neoprene construction; flat-lock stitching; and a durable, reinforced ankle. Color coordinated by size.

Style: LFS

Male sizes:
S (5-7) Yellow
M (7-9) Red
L (9-11) Blue
XL (11-13) Green
For female equivalent, size down 1-2 sizes.



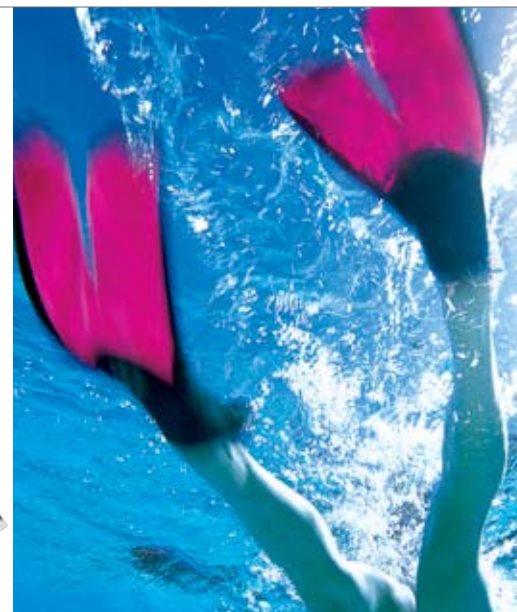
SPLITFIN™ TRAINING FIN

Our versatile SplitFin Training Fin looks different because it is different. Unlike conventional fins that force the foot to push water in a flat plane, much like an old paddlewheel, the unique split blades slice through the water with two winged surfaces creating lift and forward propulsion much like a propeller. SplitFins operate more efficiently than 'paddle' bladed fins by mimicking a user's natural kicking cadence. This ensures a more even distribution of resistance during the upswing and down thrust motions of the kicking cycle, working both muscle groups equally to help build leg strength and power output.

The SplitFin functions optimally with a tighter, higher frequency kick for maximum performance power and speed training benefit. This type of kick simulates the natural 'turnover' rate an athlete can only achieve at race pace. The unique flexible split blade allows sustained intense training over the course of your workout and helps reduce ankle strain, fatigue and cramping often associated with the use of conventional 'paddle' fins. With the SplitFin, the possibilities are now as endless as your workout.

Style: LFSPLIT

Male sizes:
XXS 1-2 Purple
XS 3-4 Orange
S 5-6 Green
M 6-7 Yellow
L 8-9 Red
XL 10-11 Blue
XXL 12-13 Smoke
XXXL 13-14 Clear
For female equivalent size down 1-2 sizes.



CATALYST™ BRITES

New translucent color-coded sizes. The Catalyst helps improve stroke technique while building strength. Its patented unique keyhole design helps more evenly distribute pressure while improving water feel and reducing shoulder stress. Constructed of durable, injection molded, UV resistant polypropylene. Paddle has smooth edges and multi-hole strap design for custom centering on hand. U.S. Patent No. 5,511,998

Style: LVC

Size	Color	*Recommended Use
XXS (0)	Translucent Orange	Beginning swimmers.
XS (1)	Translucent Green	Young age groupers (8-12 years).
S (2)	Translucent Yellow	Older age groupers (12+ years), beginning Masters.
M (3)	Translucent Red	High school males, Sr. National females, mid Masters.
L (4)	Translucent Blue	Collegiate swimmers, Sr. National males.
XL (5)	Translucent Smoke	Very strong swimmers, water aerobics.

* For non-freestyle strokes, size down one paddle size.



MENTOR HAND PADDLE

Created and developed by Ron Johnson, (World Record Masters swimmer, former ASU Head Coach, inventor of the Strokemaker™ and Catalyst™ training paddles). The Mentor is perfect for swimmers of all levels, from fitness swimmers to triathletes. This evolutionary, technical paddle is designed to build strength without losing feel, and catches water quicker on the entry phase of the stroke than traditional paddles. It allows for maximum water feel and teaches you proper stroke techniques as well as specific strength development for all four competitive strokes. All while reducing shoulder stress. Patent Pending.

- Constructed of lightweight PVC foam for added flexion
- Entry / exit holes designed to maximize water feel
- "Alluvial Wing" design helps reduce shoulder stress
- Convex palm dome fits natural swimming hand position
- Wrist strap placement aids in proper stroke recovery
- Multi-hole strap design for custom centering on hand
- Extra strap tubing included

Style: LMENTOR

XS - green
S - yellow
M - red
L - blue

Color coded by size. Patent pending.



ELITE FITNESS GLOVE

Durable, double sided neoprene webbed construction creates additional resistance in water. Exposed finger and thumb tips allow for better water feel. Velcro® wrist closure. Color coordinated by size.

Style: LFIT

S (yellow)
M (royal)
L (black)



DRY-OFF SPORT TOWEL

Synthetic, 17" x 13" towel allows repeated use without losing softness or reducing absorption. Storage case.

Style: LTW

420 blue
441 aqua
531 lavender



LARGE DRY-OFF SPORT TOWEL

Same great qualities as the Dry-Off Sport towel in a larger 26" X 17" size. Storage case.

Style: LTWL

420 blue
531 lavender



BAGS / SACS



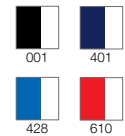
ALLIANCE TEAM™ DUFFLE | NEW

12" x 24" x 12"

- Dual zip top panel opens to large main compartment.
- Padded, adjustable comfort strap with swivel clips.
- Side and end zippered pockets.
- Reinforced zipper pulls.
- Reinforced bottom.

Style: LATD

001 black / noir
401 navy / marine
428 royal
610 red / rouge



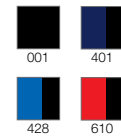
TEAM BACK PACK

18.5" x 13.25" x 9.75"

- Padded, adjustable shoulder straps with two front buckle closures for extra support.
- Large, front-load main compartment with inner sleeve.
- Front mesh pocket.
- Two front adjustable equipment hooks.
- Reinforced zipper pulls.
- Heavy-duty, reinforced bottom.

Style: LBTEAM

001 black / noir
401 navy / marine
428 royal
610 red / rouge



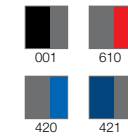
TRANSITION BAG

The Transition backpack is fabricated from durable, 600 Denier Polyester/PVC.

- Padded Adjustable Back Straps.
- Two Large Internal Mesh Shoe Pockets – Running and Cycling.
- Removable Waterproof Bag for Wet Items (with clip for wetsuit).
- Dual Zip Fully Openable Main Compartment.
- Large Outside Mesh Pocket.
- External Helmet Pocket with Safety Clip and Bungee Straps.
- Two External Mesh Water Bottle Pockets.

LTRA

001 black / grey
610 grey / red
420 grey / royal
421 steel blue / grey



DOGGY BAG

Lightweight mesh carry-all bag with front identification patch, and lace lock. Great for holding training equipment during workout. 24" x 29".

Style: LBD

001 black
428 royal
610 red



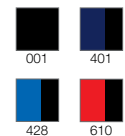
TEAM BAG

12" x 24" x 12"

- Dual zip top panel opens to large main compartment.
- Adjustable strap with swivel clips.
- Side and end zippered pockets.
- Reinforced zipper pulls.
- Reinforced bottom.

Style: LBTE

001 black
401 navy
428 royal
610 red



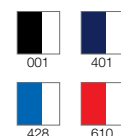
ALLIANCE TEAM™ BACKPACK | NEW

18.5" x 13.25" x 9.75"

- Padded, adjustable shoulder straps with two front buckle closures for extra support.
- Two Padded, back-support panels.
- Large, front-load main compartment with inner sleeve.
- Small front pocket with inner pockets good for small items.
- Two front adjustable equipment hooks.
- Two mesh side pockets.
- Reinforced zipper pulls.
- Mesh bottom compartment ideal for wet towel or suit.
- Heavy-duty, reinforced bottom.

Style: LATBP

001 black
401 navy
428 royal
610 red



MEET MAT

This versatile carry bag converts into a padded foam mat that's perfect for swim meets. Comes with a removable mesh zip bag, an outside zip pocket and I.D. tag. Foam sections are encased in durable 420 denier nylon. Inside stuff-it pouch converts to pillow. 58" L X 22" W

Style: LBMAT

006 black-royal / noir-royal



COACH'S COMPUTER BAG

Constructed from an extra durable 420 Denier Metallic Silver Dobby PVC. Two main compartments. Features removable, padded protective case for laptop computer and slim, exterior side pockets for cell phone storage. Two large, exterior zippered pockets. Two interior mesh pockets, 6 pen holders, two pockets for PDA or calculator, and four business card sleeves. Non-slip padded comfort strap with swivel clips. Inverse zippered pocket easily slips on to rolling luggage for convenient travel. 17"W X 13"H X 5"D

Style: LBCC

049 uranium



SANDALS



FEMALE DECK SHOES

Style: PS-LAD

COLOR / COULEUR
001 black / noir
SIZES / GRANDEURS
Adult / Adulte: S-XL

MALE DECK SHOES

Style: PS-MEN

COLOR / COULEUR
420 blue / bleu
SIZES / GRANDEURS
Adult / Adulte: S-XL



TECHNO WATER SOCKS

Male: LTECHML
Female: LTECHFEM

COLOR / COULEUR
001 black / noir
006 black-royal / noir-royal
SIZES / GRANDEURS
Adult / Adulte: S-XL



FEMALE THONG SANDALS

Style: THONG

COLOR / COULEUR
420 blue / bleu
652 fushia
SIZES / GRANDEURS
Adult / Adulte: XS-L

ACCESSORIES

GOGGLE CASE

This durable zippered polyester case features a soft interior to protect goggles and other small accessories.

Style: LGCASE
001 black
428 royal



ANTI-FOG SPRAY & LENS CLEANER

Specifically formulated solution helps keep goggles and eyeglasses clean and fog free.

Style: LAF



GOGGLE REPAIR KIT

Includes one split rubber headstrap, nosepiece and two T-slot sideclips. Fits most models requiring strap width of 7/16"

Style: LRK
100 white



SPEEDRAIL RACING HEADSTRAP KIT

Includes one 3/8" beveled Speedrail double extruded TPR headstrap and one speedclip. UV resistant strap features tacky surface to prevent slippage and maintain a secure fit. Fits racing goggles requiring a double or 3/8" wide headstrap.

Style: LGSSPD

007 black / clear
401 navy / clear
310 green / clear
820 flor. orange / clear



LATEX NOSE CLIP

Comfortable latex covered metal clip with headstrap.

Style: LNC



SWIM CLIP

Stainless steel nose clip with latex coating.

Style: LSC



SOFT PAD NOSE CLIP

Made of pliable soft polycarbonate with soft contact point silicone pads. Features flex adjustment memory for custom fit. Floatable.

Style: LNCPAD

101 clear / clear
105 clear / blue



YOUTH MULTI-COLORED SILICONE EAR PLUGS

Includes six ear plugs and storage case.

Style: LEPY
970 multi



SOFT SILICONE EAR PLUGS

Includes four ear plugs and storage case.

Style: LEP
101 clear



MOLDED EAR PLUGS

Unique, soft latex molded design creates water tight seal and allows for hearing during use. Includes two ear plugs and storage case.

Style: LEAR

260 beige
S, M (4-5), M / L, L



PROMOTIONAL ITEMS AND CUSTOMHOUSE

AQUA POSSE - WINNING HEROES RIGHT BY YOUR SIDE

Once in a place called Pool Land, there was a team of very enthusiastic swimmers. But one particular season, they just couldn't win a single race regardless of how much they worked out. During the last race of the season, they sat disappointed in the musty locker room looking for any kind of hope. One of the athletes yelled, "I'm not going to let this ruin our spirit, I know exactly what we need-- Mascots! Yeah, we need our very own mascots." Suddenly, from around the corner, appeared Flip Turn, Fin Duck, Freestyle Frog, Popsicle and Sweepshot. The five aquatic heroes picked up the enthusiastic athletes, took them outside and tossed them in the pool.

AQUA POSSE - MINI LIGHTS (THEY LIGHT UP!) | NEW



SHINING SWEEPSHOT

Style: LMSEAL
019 grey



DAZZLE DUCK

Style: LMDUCK
720 yellow



ATOMIC POPSICLE

Style: LMPENG
060 black / white



FLASHY FLIP TURN

Style: LMDOLF
420 blue

AQUA POSSE - ORIGINAL



SWEEPSHOT

Style: LSEAL
019 grey



FIN DUCK

Style: LDUCK
720 yellow



FREESTYLE FROG

Style: LFROG
color: 310 green



POPSICLE

Style: LPENG
060 black / white



FLIP TURN

Style: LDOLF
420 blue

SPLITFIN KEYCHAIN

A cool mini Splitfin that will hold and organize all of your keys!

Style: LFINKC
970 assorted



WATER BOTTLE

Features a leak-proof screw top, hi-flow spout. FDA Approved. 21 oz.

Style: LWBR
101 clear



CustomHouse is a state-of-the-art service that provides fast and reliable custom team logo imprinting on TYR suits, caps, warm-ups, bags and T-shirts. Please contact your TYR team dealer for details.





HEAD OFFICE - BUREAU CHEF

Josée Brouillette

Sales Manager - Directrice des ventes

160 St-Viateur Est, suite 602
 Montréal (Qc) H2T 1A8
 Tel.: 514-276-2000
 Fax: 514-276-0092
 Toll free: 1-800-215-3329
 E-mail: tyrsport@total.net

Catalogue réalisé par



Benoit Lafrance
 Directeur de production
Catherine LeMoynes
 Designer graphique
 (514) 886-2650
 www.synopse.ca

QUÉBEC

Montreal

Ruby & Sherman Salis Agency inc.

Ruby Salis

177, Leslie St.
 Dollard Des Ormeaux, Québec H9A 1X2
 Tel. / Fax: 514-683-3602

**Québec (ext. de Montréal)
 Ottawa, Northern Ontario**

Agences Bolduc

**Michel Bolduc
 Julie Romanoff**

8170, chemin Montview, suite 212
 Montréal (Qc) H4P 2L7
 Tel.: 514-735-2249
 Fax: 514-735-2240
 Cell: 514-773-2249
 E-mail: bolducromanoff@ca.inter.net

ONTARIO

Toronto, Eastern Ontario

Ajay Sport enr.

Andy Andruchiw

41, Harrop Avenue
 Etobicoke (Ont.) M9B 2G8
 Tel.: 416-626-1572
 Fax: 416-626-8686
 Toll free: 1-877-284-7739
 E-mail: andruch@pathcom.com

**West of highway 10
 Southwest Ontario**

Howie Wark Sales

Howie Wark

#97 - 3333 New St.
 Burlington (Ont.) L7N 1N1
 Tel.: 905-631-8916
 Fax: 905-631-8916
 E-mail: hwark1@cogeco.ca

MARITIMES

Team Canning Sales Agency

Eva Lutes

84 A Driscoll Crescent
 Moncton, New Brunswick E1E 3R8
 Tel.: 506-389-2266
 Fax: 506-384-0912
 Toll free: 1-800-504-2266

MANITOBA & SASK.

Evolution Sports inc.

Carol Yano

145, South point Dr.
 Saskatoon, Sask. S7T 1C6
 Tel.: 306-653-3122
 Fax: 306-665-8919
 E-mail: cbyano@yourlink.ca

ALBERTA

Betty Jacobs Agencies

Betty Jacobs

4135 67th Street N.W.
 Calgary (Ab.) T3B 2J2
 Tel.: 403-237-5857
 Fax: 403-286-2387
 E-mail: bettyjacobs@shaw.ca

BRITISH COLUMBIA

Buckler's Fashion Agencies inc.

Chuck Buckler

300 - 3495 Cambie Street
 Vancouver (B.C.) V5Z 4R3
 Tel.: 604-322-1891
 Fax: 604-322-1831
 Cell: 604-760-6720
 E-mail: buckler@shaw.ca